



Busy Bee Tools

B2971

HEAVY DUTY OAK WORKBENCH WITH STEEL LEGS

User Manual



COPYRIGHT © 2012 BY CRAFTEX INDUSTRIES INC.

NO PORTION OF THIS MANUAL MAY BE PRODUCED WITHOUT
THE WRITTEN CONSENT OF CRAFTEX INDUSTRIES INC.



Table of Contents

Work Bench Features	3
Unpacking.....	4
Drawer	4
Leg Assembly	4
Drawer Supports.....	5
Bottom Shelf	5
Vise Assembly	5
Parts Breakdown	6
Parts List.....	7
Warranty	8

MODEL B2971 HEAVY DUTY OAK WORK BENCH WITH STEEL LEGS

By following the instructions and procedures laid out in this owner's manual, you will receive years of excellent service and satisfaction. The B2971 is a professional work bench and proper care and safety procedures should be adhered to.

FEATURES AND SPECIFICATIONS

Table Top 1-1/2" Thick Oak
Drawer 1 Drawer for Storage with Back Bearing Slides

Drawer Size

Width 10-1/4"
Length..... 12-3/4"
Depth 2-3/4"

Legs..... Four Adjustable Steel Legs
Leveling Foot Four Leveling Feet

Vises..... 2 Oak-Faced Vises with Removable Top

Vises Size

Width 13"
Thickness 2"

Bench Dogs Four

Workbench Size

Width 62"
Depth 30"
Height 39"

Weight 70 Kg (156 lbs)

UNPACKING

Carefully remove the items packed in the carton. It may be a good idea to save the carton and packing material in case it might be needed in the future.

ASSEMBLY

Take the drawer bottom panel and attach the front and rear panels to it. Then take the side panels and attach them to the sides of the drawer bottom panel and the front & rear panels using glue and wood dowels. Use the screws (provided) to secure the joints. See figure-1

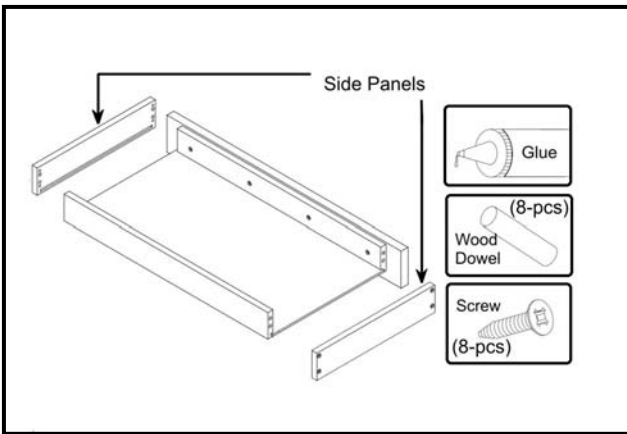


Figure-1 Assembling the drawer

At this point you need the help of assistance or a friend to help you place the table top upside down on the floor or a flat clean surface.

Once the table top is upside down, take the legs and attach each lower (smaller) legs to each upper (bigger) legs by sliding the lower legs into the upper legs and securing them using the flange bolts provided. See figure-2

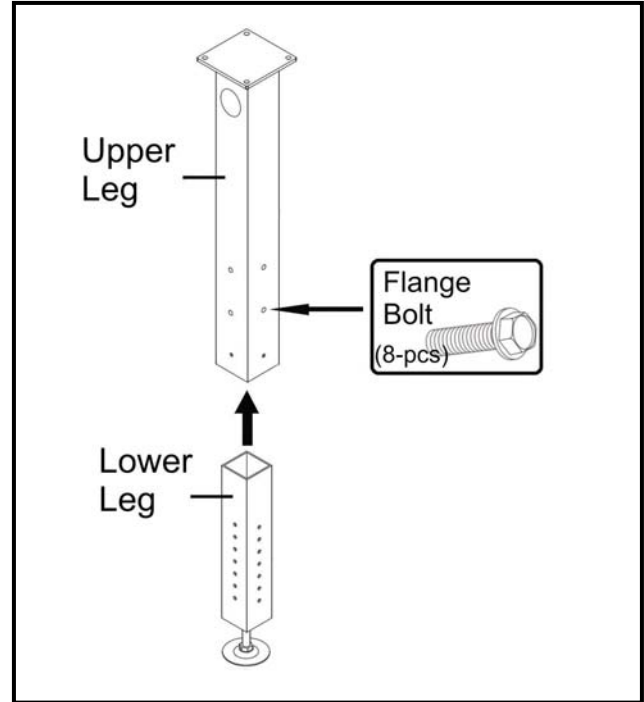


Figure-2 Attaching lower leg to upper leg

Make sure all the lower legs are at the same length into the upper legs.

Now, attach the 2 leg support assemblies to each two legs using flange bolts as shown in figure-3

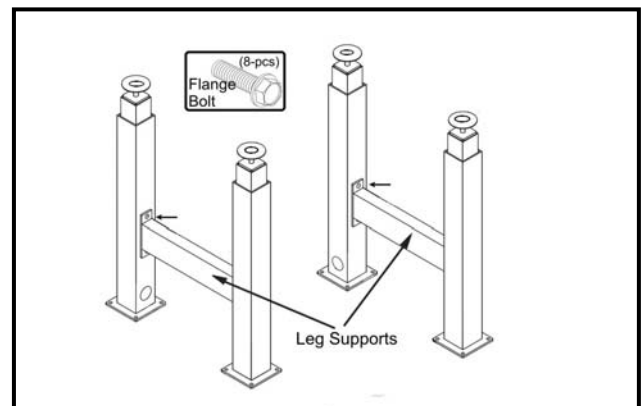


Figure-3 Attaching the legs support assembly

Take the leg assemblies and align the hole on them with the holes on the table and secure them to the table using led screws provided. See figure-4

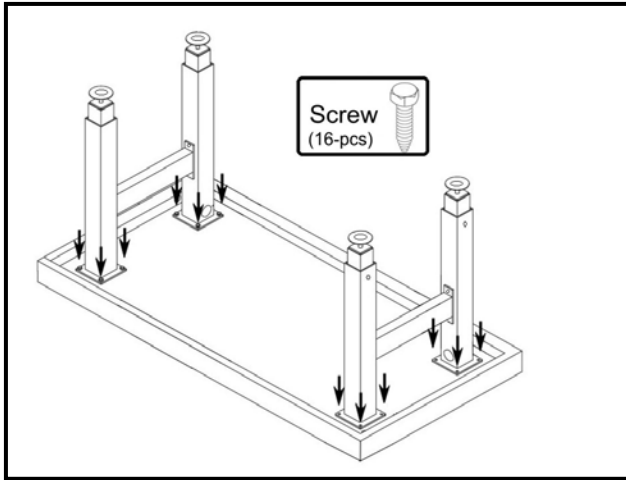


Figure-4 Attaching legs to the table

Install the drawer support to the table using glue and wood dowels as shown in figure-5 and secure them with the screws provided.

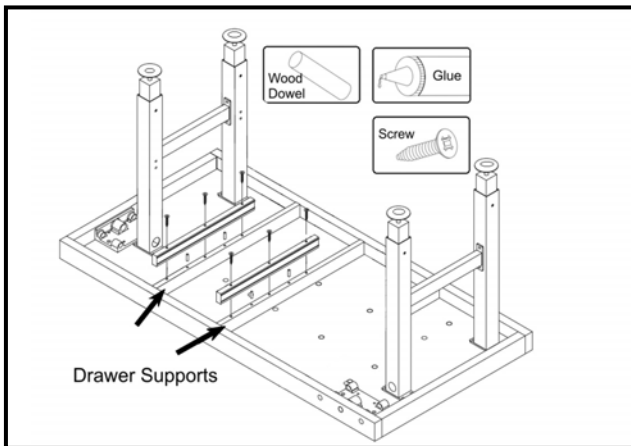


Figure-5 Installing the drawer supports

Make sure the drawer slides on the drawer supports are facing the correct direction when installing drawer supports.

Now, get assistance to turn the bench up right. The bench features foot pads which allow making the bench level and stable with the surface it is standing on. Use the

flange bolts and flat washers to install the bottom shelf to the legs- See figure-6

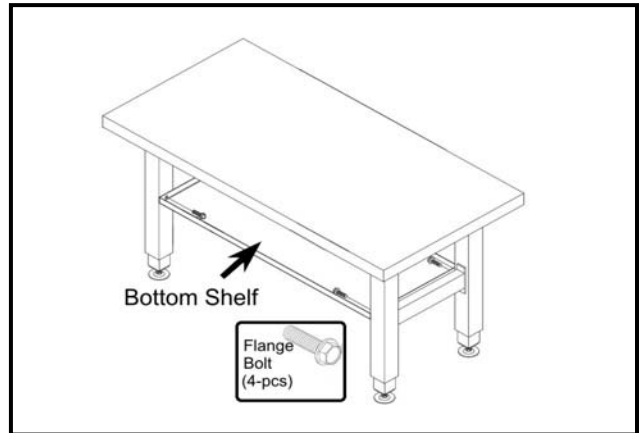


Figure-6 Installing the bottom shelf

VICE ASSEMBLY

Take the caps off the ends of the handles and slide the handles into the vice assemblies shown in figure-7. When the handles inserted, glue the caps back on the handles.

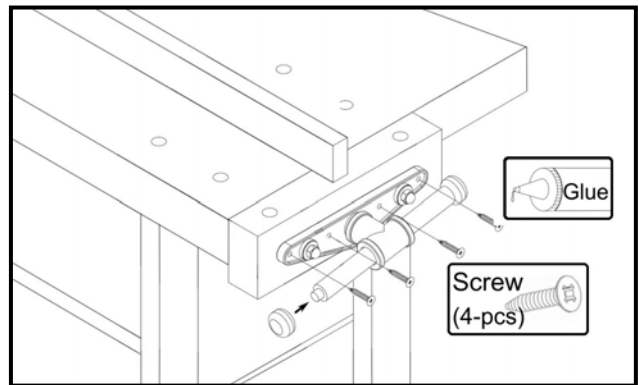


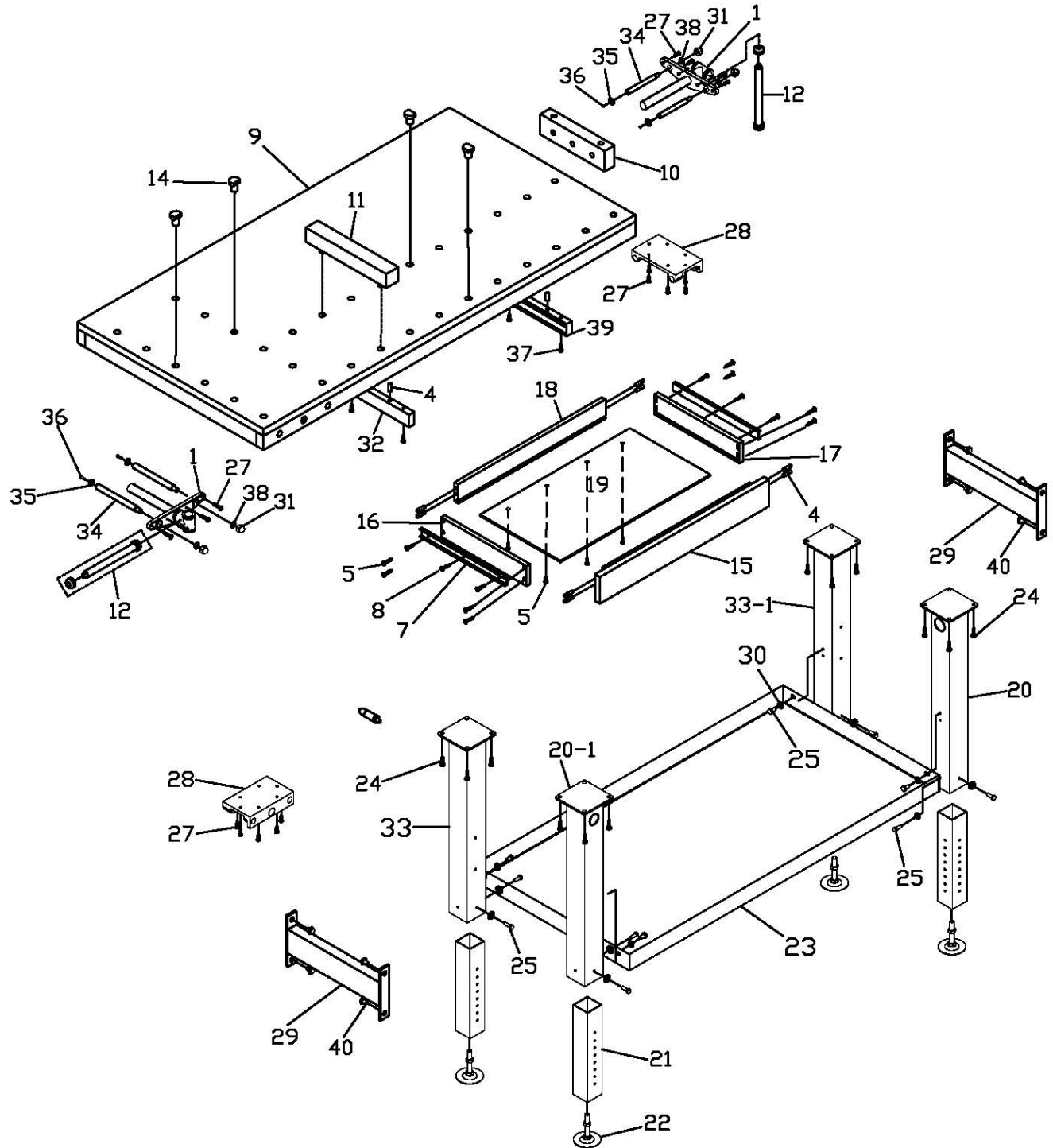
Figure-7 Installing the vise assembly

Slide both vise assemblies into the vise faces and tighten them using the wood screws provided.

Finally, take the drawers and slide them on the rails under the table and insert the bench stop bar and the bench dogs into the bench top.

B2971 - Heavy Duty Work-Bench

PARTS BREAKDOWN



B2971 - Heavy Duty Work-Bench

PARTS LIST

1	WISE LEADSCREW ASSEMBLY	2
4	WOOD DOWEL M8x30	12
5	WOOD SCREW #8x1-1/4	12
7	BALL BEARING DRAWER SLIDE	2
8	WOOD SCREW M4x13	6
9	WORKBENCH TOP	1
10	WISE FACE	2
11	BENCH STOP BAR	1
12	WISE HANDLE ASSEMBLY	2
14	BENCH DOG	4
15	FRONT DRAWER PANEL	1
16	DRAWER PANEL LEFT	1
17	DRAWER PANEL RIGHT	1
18	DRAWER PANEL BACK	1
19	DRAWER PANEL BOTTOM	1
20	UP. LEG W/SIDE LEADSCREW HOLE	1
20-1	UP. LEG W/FRONT LEADSCREW HOLE	1
21	LOWER LEG	4
22	FOOT PAD M14-2.0x76	4
23	BOTTOM SHELF	1
24	LAG SCREW 5/16-18x1	16
25	HEX BOLT M8-1.25x18	16
27	WOOD SCREW #8x1	20
28	LEADSCREW PLATE	2
29	LEG SUPPORT	2
30	FLAT WASHER 8MM	16
31	ACORN NUT 5/16-18	4
32	LEFT DRAWER SUPPORT W/RAIL	1
33	UPPER LEG W/O LEADSCREW HOLE	1
33-1	UPPER LEG W/O LEADSCREW HOLE	1
34	WISE ROD	4
35	WISE ROD WASHER	4
36	WISE BOLT	4
37	WOOD SCREW #10x1-1/2	6
38	FLAT WASHER 14MM	4
39	RIGHT DRAWER SUPPORT W/RAIL	1
40	Flange Bolt	8



Busy Bee Tools

WARRANTY

2 YEAR LIMITED WARRANTY

Busy Bee Tools warrants every product to be free from defects in materials and agrees to correct such defects where applicable. This warranty covers **two years** for parts and 90 days for labour (unless specified otherwise), to the original purchaser from the date of purchase but does not apply to malfunctions arising directly or indirectly from misuse, abuse, improper installation or assembly, negligence, accidents, repairs or alterations or lack of maintenance.

Proof of purchase is necessary.

All warranty claims are subject to inspection of such products or part thereof and Busy Bee Tools reserves the right to inspect any returned item before a refund or replacement may be issued.

This warranty shall not apply to consumable products such as blades, bits, belts, cutters, chisels, punches etceteras. Busy Bee Tools shall in no event be liable for injuries, accidental or otherwise, death to persons or damage to property or for incidental contingent, special or consequential damages arising from the use of our products.

RETURNS, REPAIRS AND REPLACEMENTS

To return, repair, or replace a Busy Bee Tools product, you must visit the appropriate Busy Bee Tools showroom or call 1-800-461-BUSY.

For replacement parts directly from Busy Bee Tools, for this machine, please call 1-800-461-BUSY (2879), and have your credit card and part number handy.

- All returned merchandise will be subject to a minimum charge of 15% for re-stocking and handling with the following qualifications.
- Returns must be pre-authorized by us in writing.
- We do not accept *collect* shipments.
- Items returned for warranty purposes must be insured and shipped pre-paid to the nearest warehouse
- Returns must be accompanied with a copy of your original invoice as proof of purchase. Returns must be in an unused condition and shipped in their original packaging a letter explaining your reason for the return. Incurred shipping and handling charges are not refundable.
- Busy Bee will repair or replace the item at our discretion and subject to our inspection.
- Repaired or replaced items will be returned to you pre-paid by our choice of carriers.
- Busy Bee reserves the right to refuse reimbursement or repairs or replacement if a third party without our prior authorization has carried out repairs to the item.
- Repairs made by Busy Bee are warranted for 30 days on parts and labour.
- Any unforeseen repair charges will be reported to you for acceptance prior to making the repairs.
- The Busy Bee Parts & Service Departments are fully equipped to do repairs on all products purchased from us with the exception of some products that require the return to their authorized repair depots. A Busy Bee representative will provide you with the necessary information to have this done.
- For faster service it is advisable to contact the nearest Busy Bee location for parts availability prior to bringing your product in for repair.