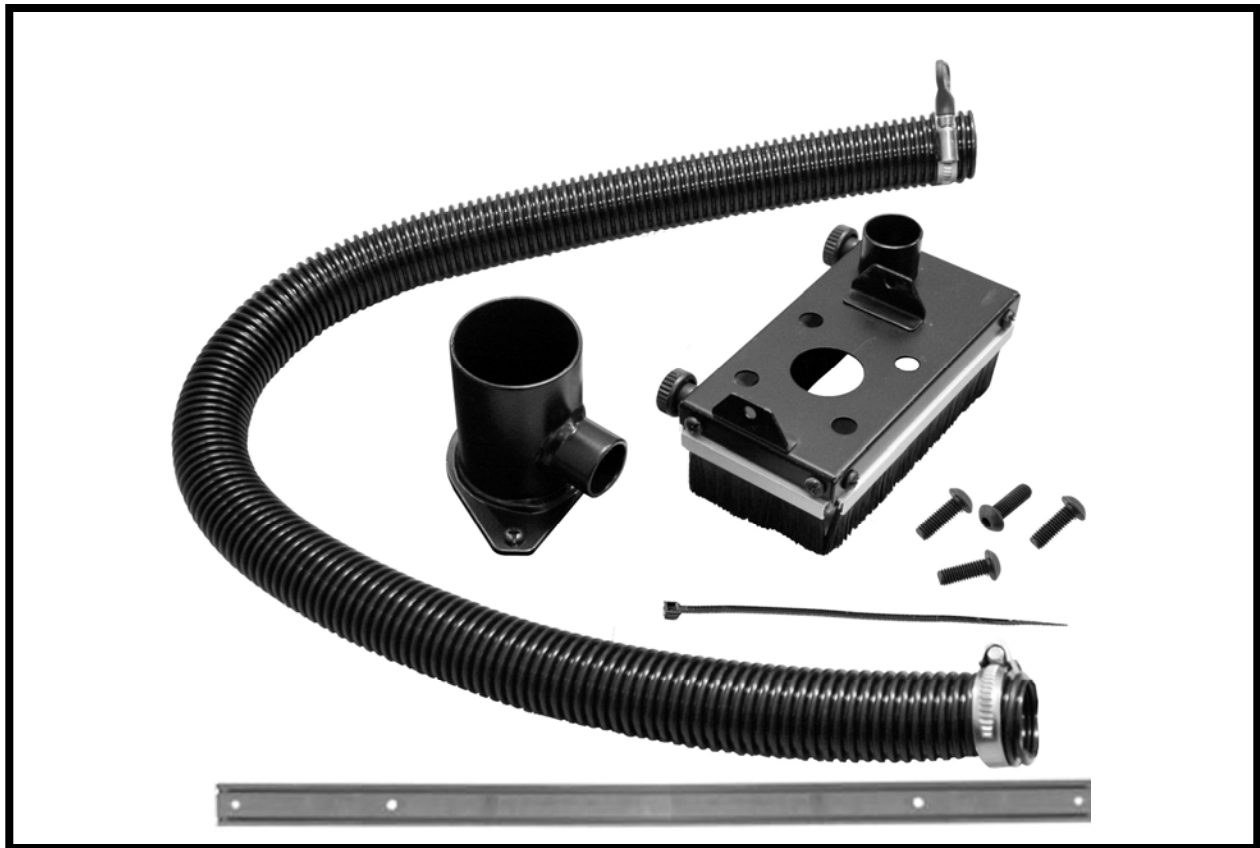




MODEL CARVERDC15 DUST COLLECTION SYSTEM FOR 15" IntelliCarve CNC Machine



COPYRIGHT 2013 © Busy Bee Tools

NO PORTION OF THIS MANUAL MAY BE PRODUCED
WITHOUT THE WRITTEN CONSENT OF BUSY BEE TOOLS



ASSEMBLY

Disconnect the machine from the power source if already connected.

Attach the dust collection skirt to the spindle head assembly and secure it using screws provided. See figure-1.



Figure-1 Installing the collection skirt

When using the machine without the safety enclosure, remove the two side cover screws and install the dust port. See figure-2.

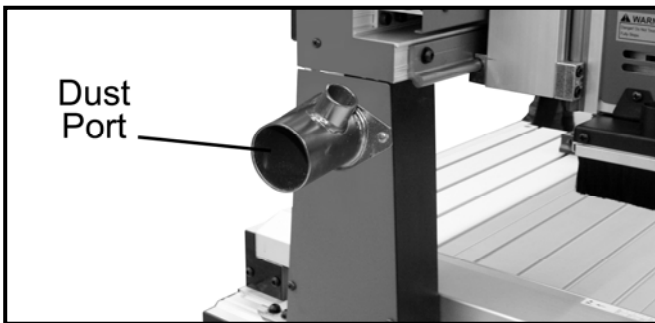


Figure-2 Installing the dust port (when using the machine without the safety enclosure)

The dust collection system for the CNCCARVER15 comes with a mounting bracket which is installed when the machine is used with the safety enclosure.

When using the machine with the safety enclosure, remove the two screws on the upper side bracket on the machine and install the bracket by securing it with the screws removed. See figure-3.

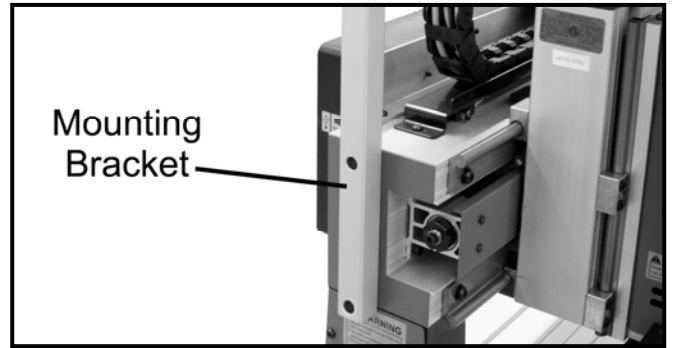


Figure-3 Installing the mounting bracket

Now, attach the dust port to the mounting bracket and secure it using two screws, provided. See figure-4.

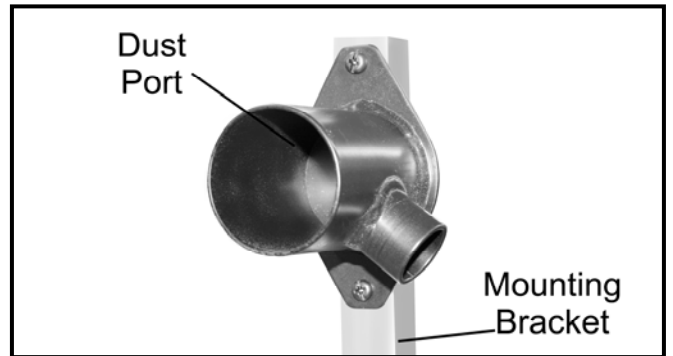


Figure-4 Installing the dust port to the bracket (when using the machine with the enclosure)

Attach the hose with one end on to the dust collection skirt and the other end to the dust port and tighten the hose clamps.

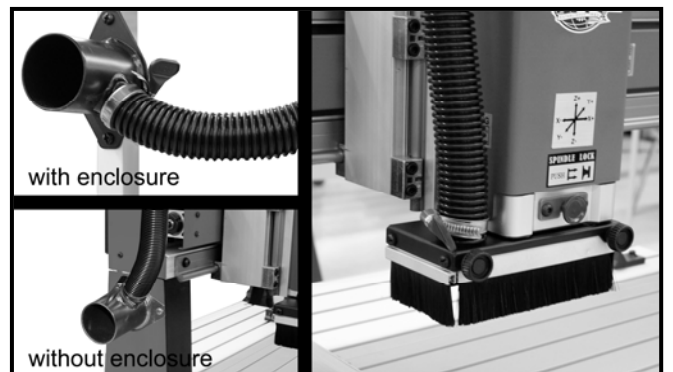
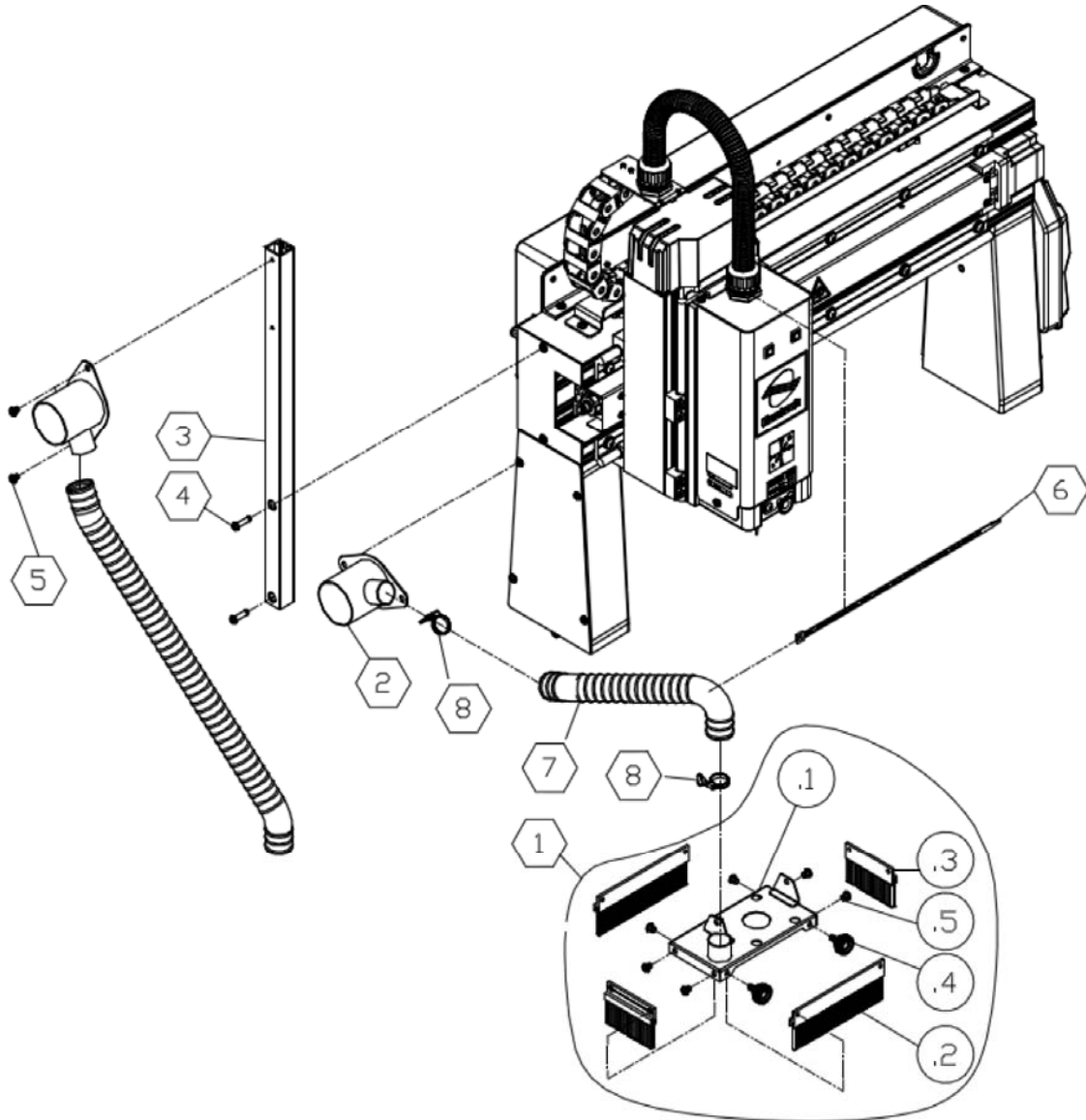


Figure-5 Installing the hose

The kit comes with a tie wrap to tie the hoses in place. Once the hose clamps are tightened, secure the hoses in place using the tie wrap.

CARVERDC15 PARTS DIAGRAM AND LIST



Key	Part No.	Descriptions	Q'ty	
	FJ0004	Brush & Dust Collect System	1	
1	923489-000	Brush Assembly 15"	1	
.1	173520-008	Plate	1	
.2	660208-000	Brush - Long	2	
.3	660209-000	Brush - Short	2	
.4	230357-000	Thumb Screw	2	
.5	000303-101	Round Head Phillips Screw	M5*0.8P*6	6
2	173521-008	Dust Port	1	
3	310375-909	Bracket	1	
4	000303-106	Round Head Phillips Screw	M5*0.8P*16	2
5	000303-101	Round Head Phillips Screw	M5*0.8P*6	2
6	021009-000	Tie Wrap	ALT-300M-B	1
7	042620-001	FLEXIBLE HOSE	25*1000mm	1
8	042622-001	Clip	1.5"	2