



OWNER'S MANUAL



CT030 – 2HP Dust Collector

CT030 - Table of Contents

GENERAL SAFETY INSTRUCTIONS	PAGE 3
SPECIFIC SAFETY INSTRUCTIONS	PAGE 4
Features	Page 5
Illustrated Features	Page 6
Unpacking Parts	Page 7
Assembly Instructions	
Base Plate Assembly	Page 8
Motor/Impeller Assembly	Page 8
Installing Gasket & Collector Adapter	Page 9
Collector Ring Supports	Page 10
Collector Ring	Page 10
Upper Filter Bag Support	Page 11
Assembling Collector Hose	Page 12
Installing Bags	Page 13
Intake Assembly	Page 14
Schematic Diagram	Page 15
Parts List	Page 16
Grounding Instructions	Page 17
Optional Accessories	Page 18
Useful Notes & Formulas	Page 19
Warranty	Page 20

GENERAL SAFETY INSTRUCTIONS

EXTREME CAUTION SHOULD BE USED IN OPERATING ALL POWER TOOLS. KNOW YOUR POWER TOOL, BE FAMILIAR WITH ITS OPERATION. READ THE OWNER'S MANUAL AND PRACTICE SAFE USAGE PROCEDURES AT ALL TIMES.

- ❑ **CONNECT** your machine **ONLY** to the matched and specified power source.
- ❑ **WEAR SAFETY GLASSES, RESPIRATORS, HEARING PROTECTION** and **SAFETY SHOES** when operating heavy machinery. **Always wear safety glasses.**
- ❑ **DO NOT** wear loose clothing or jewellery when operating machinery.
- ❑ **A Safe Environment is important.** Keep the area free of dust, dirt and other debris in the immediate vicinity of the machine.
- ❑ **BE ALERT!** Do Not Use prescription or other drugs that may affect your ability or judgement to safely use this machine.
- ❑ **DISCONNECT** the power source when changing drill bits, hollow chisels or making other adjustments or repairs.
- ❑ **NEVER** leave an operating tool unattended.
- ❑ **NEVER** reach over the table when the tool is in operation.
- ❑ **ALWAYS** keep blades, knives or bits sharp and properly aligned.
- ❑ **ALWAYS** keep all safety guards in place and ensure their proper function.
- ❑ **ALWAYS** use push sticks and featherboards to safely feed your work through the machine.
- ❑ **ALWAYS** make sure that any tools used for adjustments are removed before operating the machine.
- ❑ **ALWAYS** secure your work with the appropriate clamps or vises.
- ❑ **ALWAYS** keep bystanders safely away while operating machinery.
- ❑ **THINK SAFETY. WORK SAFELY.** Never attempt a procedure if it does not feel safe or comfortable.

CT030 - SPECIFIC SAFETY INSTRUCTIONS

- ❑ The CT030 is designed to collect sawdust ONLY.
- ❑ Never attempt to use this Dust Collector to vacuum water or any other liquids.
- ❑ Never try to use this Dust Collector to collect large wood scraps.
- ❑ Never attempt to use this Dust Collector to collect metal materials such as screws, nails or other metal parts.
- ❑ Never remove the filter bag or the collection bag with the motor operating.
- ❑ Never operate the Dust Collector with all blast gates closed.
- ❑ Always disconnect the CT030 from its power source when changing or emptying the bags.
- ❑ Always be sure that the collection and filter bags are securely fastened to the Collector Body.

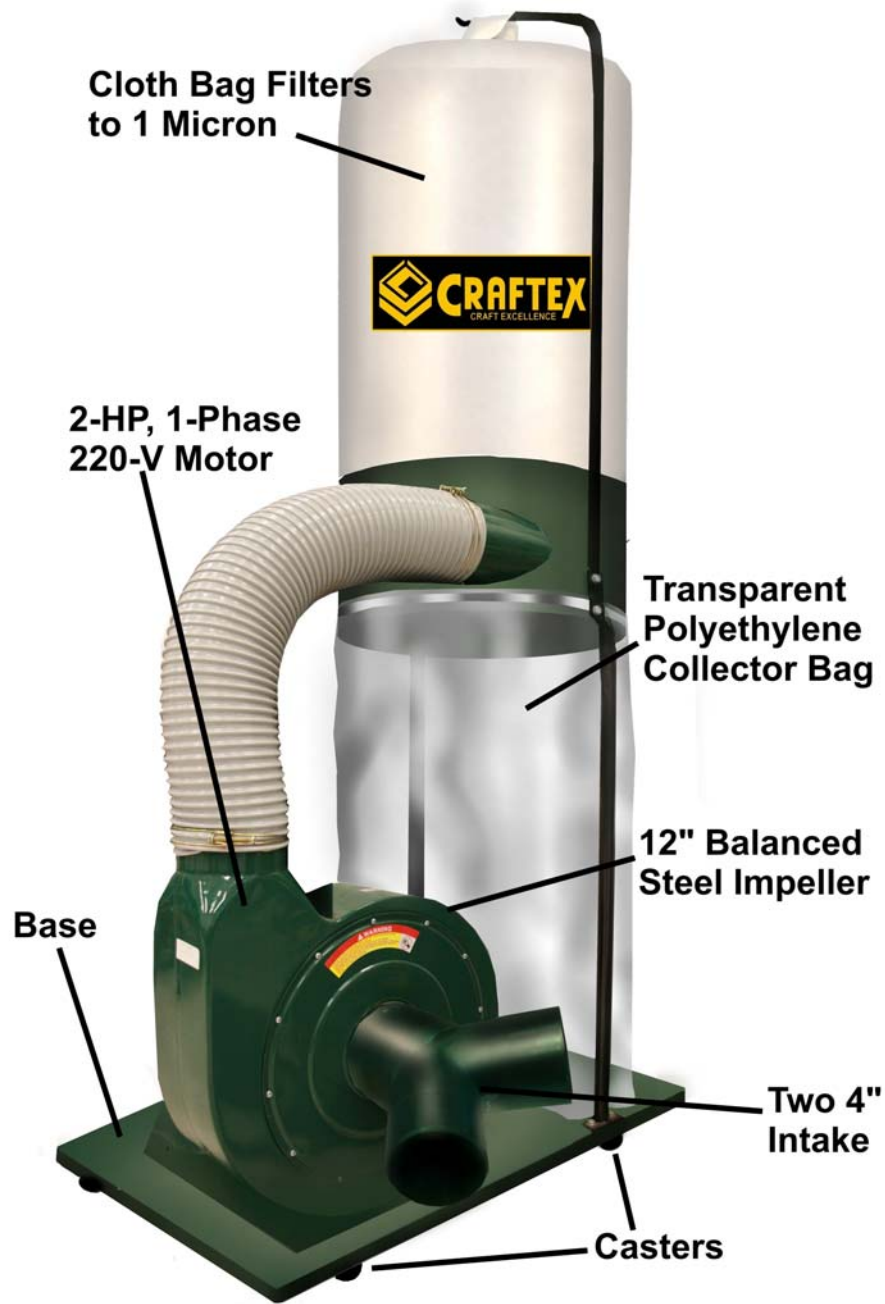
CT030 DUST COLLECTOR **FEATURES**

As part of the growing line of **Craftex** woodworking equipment, we are proud to offer the CT030 Professional Dust Collection System. The **Craftex** name guarantees Craft Excellence. By following the instructions and procedures laid out in this owner's manual, you will receive years of excellent service and satisfaction. The CT030 is a professional tool and like all power tools, proper care and safety procedures should be adhered to.

This powerful low-noise factor dust collector is portable and may be set up in semi permanent locations. Transparency of the lower bag (made of polyethylene) allows you to view the contents without constantly opening the bag.

- ❑ Motor- 2HP, 1 Phase, 220V, 12 Amp.
- ❑ Safety Power Switch with removable key.
- ❑ Balanced Steel Impeller.
- ❑ Impeller Size – 12”.
- ❑ Bag Sizes – Upper – 19” x 32”, Lower – 19” x 32”.
- ❑ Lower Bag Volume – 11.10 Cubic Feet.
- ❑ One Micron Upper Filtration Bag.
- ❑ Transparent Polyethylene lower collector bag for content visibility.
- ❑ Static Pressure – 12”.
- ❑ Air Suction Capacity – 1,596 CFM.
- ❑ Noise Level – 77db.
- ❑ Intakes – 2 @ 4”.
- ❑ Footprint – 22” x 46”.
- ❑ Mobile Base for ease of movement.
- ❑ May be installed without casters for stationary use.
- ❑ Includes a standard Grounding Kit.
- ❑ Weight – 61kg.

CT030 DUST COLLECTOR ILLUSTRATED FEATURES



CT030 DUST COLLECTOR UNPACKING

You Craftex CT030 Dust Collector is shipped in a single carton and care should be taken to make certain that the components are carefully removed.

The Parts include the following:

Motor/Impeller and Motor Switch Assembly

Collector Ring Body

Collector Hose

Collector Ring Supports (2)

Upper Filter Bag support

Dual Intake Unit

Castors, Nuts & Bolts Package

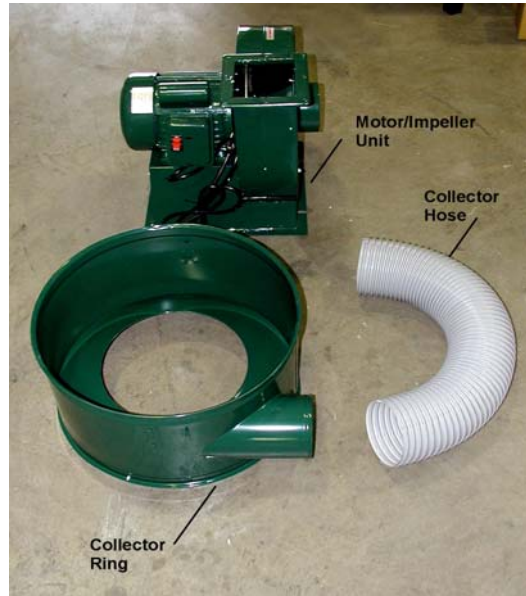
Collector Adapter

Grounding Kit

Filter Bag

Bottom Plastic Bag

Mobile Base



CT030 DUST COLLECTOR

ASSEMBLY INSTRUCTIONS

Base Plate Assembly

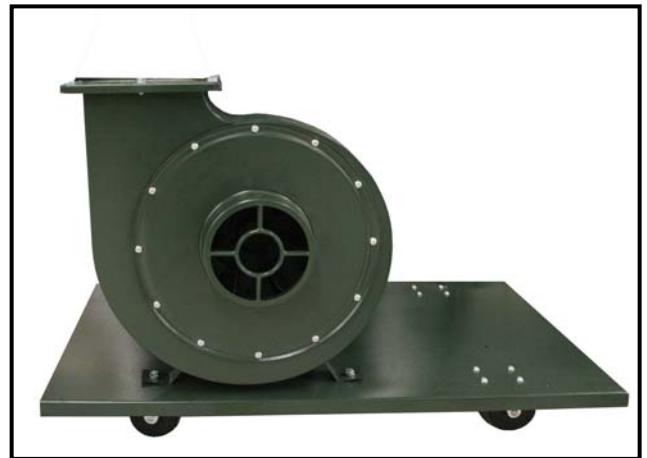
You will first want to start by assembling the base and casters.

Select the Base Plate and turn it upside down. Select the 4 Casters from the Parts Bag and fasten to the Base Plate as illustrated. Select the appropriate nuts, bolts and washers and tighten securely with the Metric Wrench provided.



Motor/Impeller Assembly

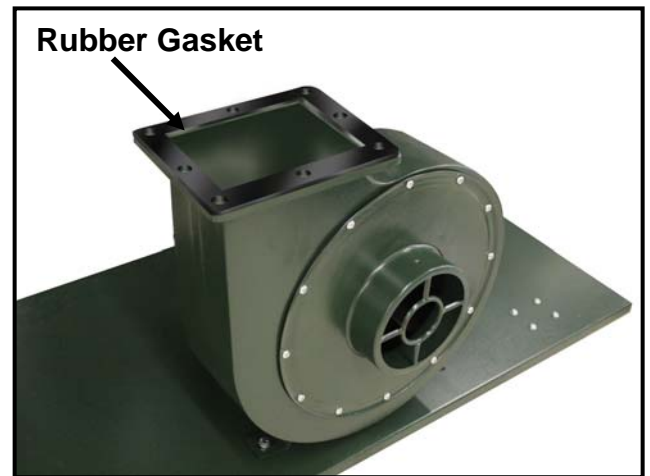
Turn the Base Plate to its upright position and select the Motor/Impeller unit. Place the Motor/Impeller on the Base Plate and align the holes as shown. Select the appropriate nuts, bolts and washers to secure the Motor/Impeller and tighten.



CT030 DUST COLLECTOR ASSEMBLY INSTRUCTIONS, Continued

Installing the Gasket and Collector Adaptor

Select the Gasket from the Parts Package and place it on the Motor/Impeller opening as illustrated.



Select the Collector Adapter and secure it to the Motor/Impeller unit with the appropriate nuts, bolts and washers.



CT030 DUST COLLECTOR

ASSEMBLY INSTRUCTIONS, Continued

Collector Ring Supports

Select the two Collector Ring Supports and fasten them to the Base Plate using the appropriate nuts, bolts and washers from the parts package. Tighten securely.



Collector Ring

Using the appropriate nuts, bolts and washers, securely fasten the Collector Ring Assembly to the Collector Ring Supports as shown. Be sure that the hose opening of the Collector Ring is positioned as illustrated. Tighten the fasteners securely.



CT030 DUST COLLECTOR

ASSEMBLY INSTRUCTIONS, Continued

Upper Filter Bag Support

Select the Upper Filter Bag Support from the loose parts and assemble it to the Collector Ring and fasten securely with the appropriate nuts, bolts and washers. Fasten the Support as indicated.



CT030 DUST COLLECTOR ASSEMBLY INSTRUCTIONS, Continued

Assembling the Collector Hose

Position the Collector Hose and one of the hose clamps over the opening of the collector adapter. Tighten the hose clamp securely with a screwdriver as shown.



Clamp the other end of the Collector Hose to the opening in the Collector Ring Assembly. Securely tighten the clamp.

Your CT030 Dust Collector should look like the one in figure on the right.



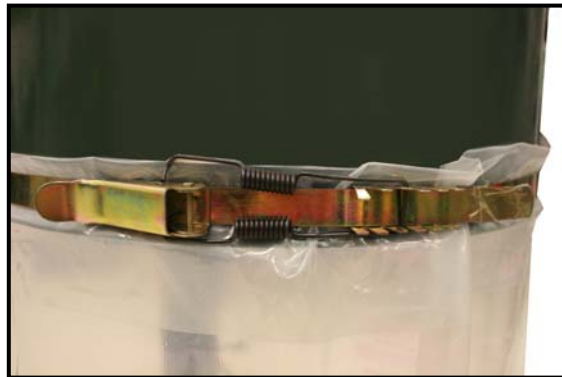
CT030 DUST COLLECTOR ASSEMBLY INSTRUCTIONS, Continued

Installing Bags

Select the filter bag and, using the loop on the top of the bag, hang it from the Upper Bag Support as shown.



Place the Filter Bag onto the recesses on top of the collector ring and secure the bag with the straps. Follow the same procedure with the lower polyethylene collector bags.



CT030 DUST COLLECTOR ASSEMBLY INSTRUCTIONS, Continued

Intake Assembly

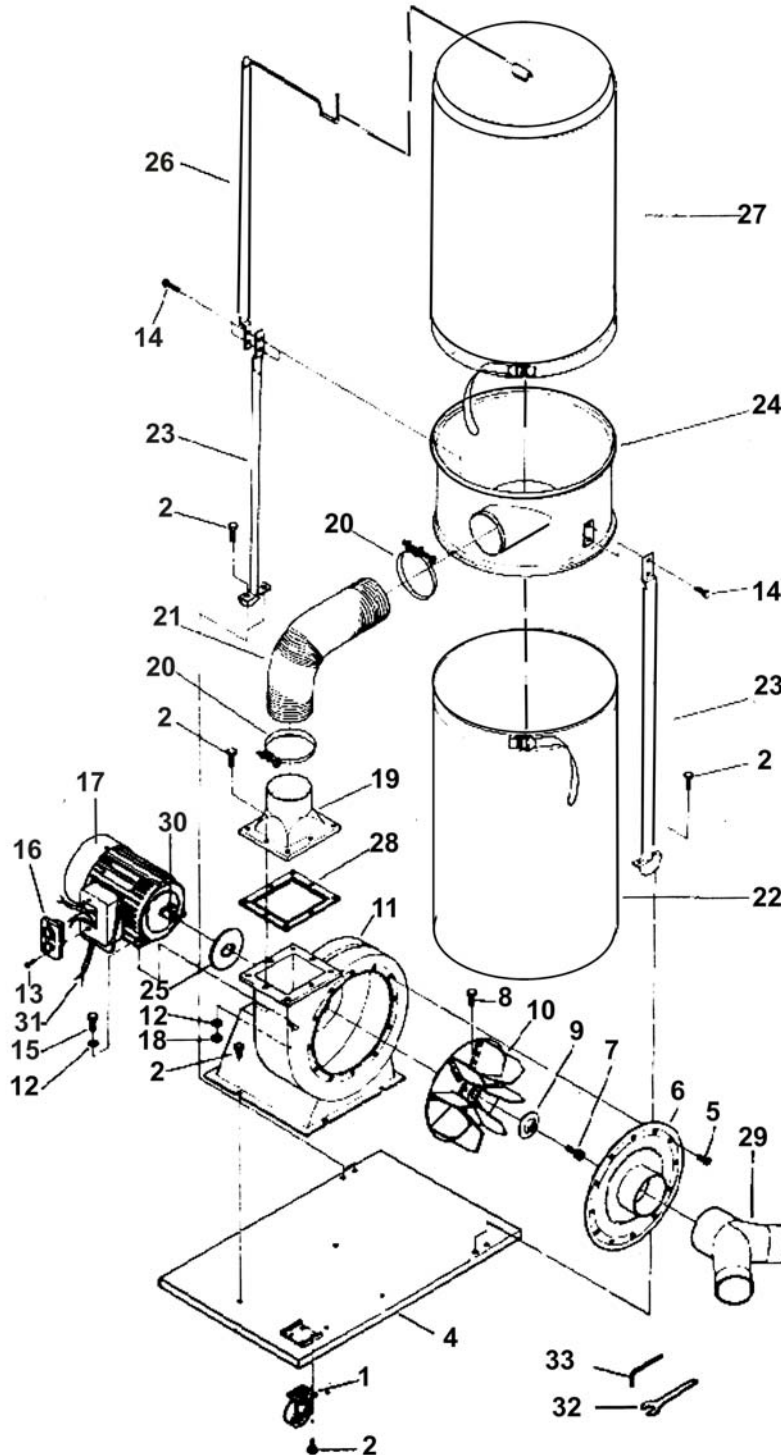
The dual 4" intake unit may now be installed onto the opening of the Motor/Impeller unit. This is a pressure fit but is secured with a self-tapping screw. The dual 4" Intake Unit has a cover cap if only one intake is required for use.



Your Craftex CT030 Dust Collector is now ready for years of excellent use. Before connecting the unit to a power source, be certain that the source is correctly grounded and is of the proper voltage and amperage.



CT030 DUST COLLECTOR SCHEMATIC DIAGRAM



CT030 DUST COLLECTOR PARTS LIST

No.	Description	Part No.	Qty.
1	Caster		4
2	Hex Head Screw	5/16 x 1/2"	32
3	*		
4	Base Plate		1
5	Pan Head Screw	10 – 24 x 3/8"	12
6	Intake Cover		1
7	Socket Head Hex Screw	1.0 x 19mm	1
8	Hex Head Screw	3/8 x 1/2"	2
9	Washer		1
10	12" Impeller Fan		1
11	Impeller Body		1
12	Washer	5/16"	8
13	Pan Head Screw	10 – 24 x 1"	2
14	Hex Head Screw	5/16 x 3/4"	4
15	Hex Head Screw	5/16 x 1"	4
16	Motor Switch		1
17	Motor		1
18	Nut	5/16"	4
19	Collector Outlet Adapter		1
20	Hose Clamp	4"	2
21	Hose	4"	1
22	Collector Bag		1
23	Collector Support Posts		2
24	Collector		1
25	Gasket		1
26	Filter Bag Support		1
27	Cloth Filter Bag		1
28	Gasket		1
29	Dual 4" Intake		1
30	Key	7mm x 7mm x 29mm	1
31	Power Cord		1
32	Open End Wrench	12mm	1
33	Hex Wrench	5mm	1

CT030 DUST COLLECTOR GROUNDING SYSTEM

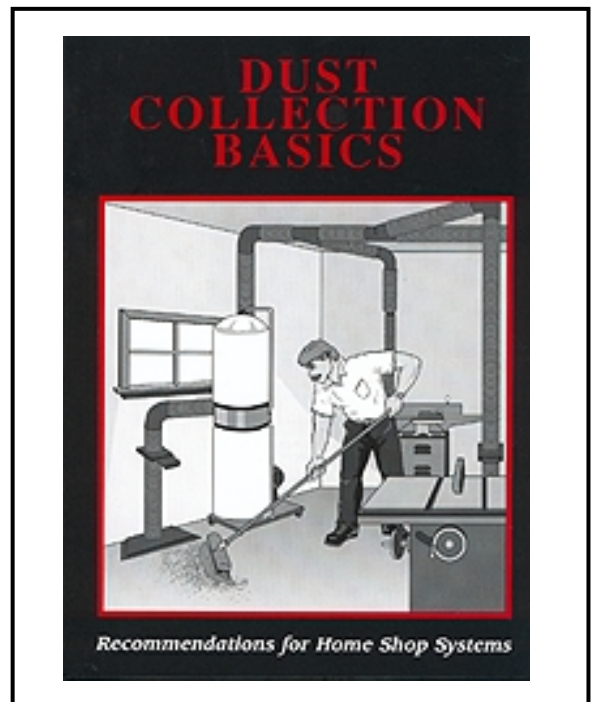
Craftex has included a grounding system with the CT030 to decrease the shock hazard (although extremely rare). The sawdust being collected becomes very dry as it travels through the collection pipes or tubes and as it spins through the system it creates a static charge. If this is not grounded, it could give the tool operator a static shock. Although the electrical shock is extremely minor, it may have consequences to some individuals.



Grounding Kit, Model # W1053

The grounding of the pipes or tubes will help eliminate the possibility of these shocks. The copper wire included with the grounding kit should be connected to the steel chassis of the dust collector and fed through a small hole made in the tubing or pipe. The wire should then be fed to the tool being used and grounded to the steel chassis. Should there be more than one tool connected (through gates) to the CT030, they should all be grounded as described above.

For more information in regards to this, you may refer to the 'Dust Collection Basics' book, model W1053. This book covers all topics in regards to home dust collection for the workshop.



Dust Collection Basics Book Model W1050

OPTIONAL ACCESSORIES

PVC FLEX HOSE

PH003 - 3" PVC Pipe ~ per foot, or 50 ft. Roll

PH004 - 4" PVC Pipe ~ per foot, or 50 ft. Roll

PH005 - 5" PVC Pipe ~ per foot, or 50 ft. Roll



Dust Accessories Kit For 4" Fittings

Model – W1055

Kit #2 to service two machines

Two blast gates, two 10' hoses, one table saw hood, one universal hood, one "Y" fitting, ten hose clamps



Dust Accessories Kit For 4" Fittings

Model – W1054

Kit #1 to service one machine

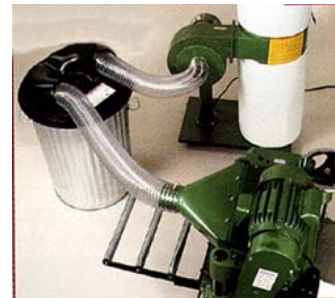
10' hose, one universal hood, two hose clamp
4 pieces



Dust Collection Cyclone Separator

Converts single stage to a two stage system. Designed to fit on standard trash cans. 20- 21" D Top. Molded A.B.S fitting puts larger particles in first stage to allow easier disposal.

Model W1049



Replacement Bags and fittings for CT030

Model CT033 – 1 Micron Cloth Bag

Model CT035 – Bottom Plastic Bags for CT030

Model CT037 – Replacement Steel Straps for CT030



Canister Upgrade Kit

CT030CHN



Useful Notes

Wood dust can be very dangerous if one is exposed to it very often. As dust collection has gained popularity over the years, so has consumer knowledge about this concern, but it is always good to know just how dangerous wood dust can be if overexposure and or unsafe woodworking practice takes place.

Health Risk and Hazards that can be caused by exposure to wood dust include the following:

- Asthma
- Eye Irritation
- Hypersensitivity
- Skin Irritation
- Dermatitis
- Acute Airway Obstructions
- Chronic Bronchitis
- Nasal Cancer

Formulas

Velocity (FPM) = Volume (CFM) / Cross Sectional Area (ft.²)

Volume (CFM) = Velocity (FPM) x Cross Sectional Area (ft.²)

Cross Sectional Area (ft.²) = Volume (CFM) / Velocity (FPM)

Circle Area = 3.142 x Radius²

Diameter = 2 x Radius



WARRANTY

CRAFTEX 3 YEAR LIMITED WARRANTY

Craftex warrants every product to be free from defects in materials and agrees to correct such defects where applicable. This warranty covers **three years** for parts and 90 days for labour (unless specified otherwise), to the original purchaser from the date of purchase but does not apply to malfunctions arising directly or indirectly from misuse, abuse, improper installation or assembly, negligence, accidents, repairs or alterations or lack of maintenance.

Proof of purchase is necessary.

All warranty claims are subject to inspection of such products or part thereof and Craftex reserves the right to inspect any returned item before a refund or replacement may be issued.

This warranty shall not apply to consumable products such as blades, bits, belts, cutters, chisels, punches etceteras. Craftex shall in no event be liable for injuries, accidental or otherwise, death to persons or damage to property or for incidental contingent, special or consequential damages arising from the use of our products.

RETURNS, REPAIRS AND REPLACEMENTS

To return, repair, or replace a Craftex product, you must visit the appropriate Busy Bee Tools showroom. Craftex is a brand of equipment that is exclusive to Busy Bee Tools.

For replacement parts directly from Busy Bee Tools, for this machine, please call 1-800-461-BUSY (2879), and have your credit card and part number handy.

- All returned merchandise will be subject to a minimum charge of 15% for re-stocking and handling with the following qualifications.
- Returns must be pre-authorized by us in writing.
- **We do not accept collect shipments.**
- Items returned for warranty purposes must be insured and shipped pre-paid to the nearest warehouse (see locations on inside back cover of this manual).
- Returns must be accompanied with a copy of your original invoice as proof of purchase. Returns must be in an un-used condition and shipped in their original packaging a letter explaining your reason for the return. Incurred shipping and handling charges are not refundable.
- Busy Bee will repair or replace the item at our discretion and subject to our inspection.
- Repaired or replaced items will be returned to you pre-paid by our choice of carriers.
- Busy Bee reserves the right to refuse reimbursement or repairs or replacement if a third party without our prior authorization has carried out repairs to the item.
- Repairs made by Busy Bee are warranted for 30 days on parts and labour.
- Any unforeseen repair charges will be reported to you for acceptance prior to making the repairs.
- The Busy Bee Parts & Service Departments are fully equipped to do repairs on all products purchased from us with the exception of some products that require the return to their authorized repair depots. A Busy Bee representative will provide you with the necessary information to have this done.
- For faster service it is advisable to contact the nearest Busy Bee location for parts availability prior to bringing your product in for repairs.