



## OWNER'S MANUAL



## CT095N – 2HP Dust Collector

## **CT095N - Table of Contents**

<b>GENERAL SAFETY INSTRUCTIONS</b>	<b>PAGE 3</b>
<b>SPECIFIC SAFETY INSTRUCTIONS</b>	<b>PAGE 4</b>
Features	Page 5
Unpacking Parts	Page 6
Assembly Instructions	
Base Plate Assembly	Page 7
Motor/Impeller Assembly	Page 7
Installing Gasket & Collector Adapter	Page 8
Collector Ring Supports	Page 9
Collector Ring	Page 9
Upper Filter Bag Support	Page 10
Assembling Collector Hose	Page 11
Installing Bags	Page 12
Intake Assembly	Page 13
Schematic Diagram	Page 14
Parts List	Page 15
Useful Notes & Formulas	Page 16
Warranty	Page 17

## **GENERAL SAFETY INSTRUCTIONS**

**EXTREME CAUTION SHOULD BE USED IN OPERATING ALL POWER TOOLS. KNOW YOUR POWER TOOL, BE FAMILIAR WITH ITS OPERATION. READ THE OWNER'S MANUAL AND PRACTICE SAFE USAGE PROCEDURES AT ALL TIMES.**

- ❑ **CONNECT** your machine **ONLY** to the matched and specified power source.
- ❑ **WEAR SAFETY GLASSES, RESPIRATORS, HEARING PROTECTION** and **SAFETY SHOES** when operating heavy machinery. **Always wear safety glasses.**
- ❑ **DO NOT** wear loose clothing or jewellery when operating machinery.
- ❑ **A Safe Environment is important.** Keep the area free of dust, dirt and other debris in the immediate vicinity of the machine.
- ❑ **BE ALERT!** Do Not Use prescription or other drugs that may affect your ability or judgement to safely use this machine.
- ❑ **DISCONNECT** the power source when changing drill bits, hollow chisels or making other adjustments or repairs.
- ❑ **NEVER** leave an operating tool unattended.
- ❑ **NEVER** reach over the table when the tool is in operation.
- ❑ **ALWAYS** keep blades, knives or bits sharp and properly aligned.
- ❑ **ALWAYS** keep all safety guards in place and ensure their proper function.
- ❑ **ALWAYS** use push sticks and feather boards to safely feed your work through the machine.
- ❑ **ALWAYS** make sure that any tools used for adjustments are removed before operating the machine.
- ❑ **ALWAYS** secure your work with the appropriate clamps or vises.
- ❑ **ALWAYS** keep bystanders safely away while operating machinery.
- ❑ **THINK SAFETY. WORK SAFELY.** Never attempt a procedure if it does not feel safe or comfortable.

## **GROUNDING INSTRUCTIONS**

This appliance must be grounded, if it should malfunction or breakdown, grounding provides a path of least resistance for electric current to reduce the risk of electric shock. This appliance is equipped with a cord having equipment-ground conductor and grounding plug. The plug must be inserted into an appropriate outlet that is properly installed and grounded in accordance with all local codes and ordinances.

**WARNING** – Improper connection of the equipment-grounding conductor can result in a risk of electric shock. Check with a qualified electrician or service person if you are in doubt as to whether the outlet is properly grounded. Do not modify the plug provided with the appliance – if it will not fit the outlet have a proper outlet installed by a qualified electrician.

### **For grounded, cord – connected appliances:**

This appliance is for use on a circuit having a normal rating more than 120volt and is factory – equipped with a specific electric cord and plug to permit connection to a proper electric circuit. Make sure that the appliance is connected to an outlet having the same configuration as the plug. No adaptor should be used with this appliance. If the appliance must be reconnected for use on a different circuit, qualified service personnel should make the reconnection.

### **For permanently connected appliance:**

This appliance must be connected to a ground metal, permanent wiring system; or an equipment – grounding conductor must be run with the circuit conductors and connected to the equipment grounding terminal or lead on the appliance.

## **CT095N - SPECIFIC SAFETY INSTRUCTIONS**

- ❑ The CT095N is designed to collect sawdust ONLY.
- ❑ Never attempt to use this Dust Collector to vacuum water or any other liquids.
- ❑ Never try to use this Dust Collector to collect wood scraps.
- ❑ Never attempt to use this Dust Collector to collect metal materials such as screws, nails or other metal parts.
- ❑ Never remove the filter bag or the collection bag with the motor operating.
- ❑ Never operate the Dust Collector with all blast gates closed.
- ❑ Always disconnect the CT095N from its power source when changing or emptying the bags.
- ❑ Always be sure that the collection and filter bags are securely fastened to the Collector Body.

## CT095N DUST COLLECTOR FEATURES

As part of the growing line of **Craftex** woodworking equipment, we are proud to offer the CT095N Professional Dust Collection System. The **Craftex** name guarantees Craft Excellence. By following the instructions and procedures laid out in this owner's manual, you will receive years of excellent service and satisfaction. The CT095N is a professional tool and like all power tools, proper care and safety procedures should be adhered to.

This powerful low lower-noise dust collector is portable or may be set up in semi permanent locations. Transparency of the lower bag (made of polyethylene) allows you to view the contents without constantly opening the bag.

- ❑ Motor- 2HP, 220V, 16 Amp.
- ❑ Balanced 12" Impeller
- ❑ Bag Volume – 5.4 Cubic Feet.
- ❑ One-Micron Upper Filtration Bag.
- ❑ Transparent Polyethylene lower collector bag for content visibility.
- ❑ Static Pressure – 10".
- ❑ Air Suction Capacity – 1,280 CFM.
- ❑ Noise Level – 85db.
- ❑ Intakes – 2 @ 4".
- ❑ Mobile Base for ease of movement.
- ❑ May be installed without casters for stationary use.
- ❑ Weight – 51kg.

# CT095N DUST COLLECTOR UNPACKING

You Craftex CT095N Dust Collector is shipped in a single carton and care should be taken to make certain that the components are carefully removed.

**The Parts include the following:**

Motor/Impeller and Motor Switch Assembly

Collector Ring Body

Collector Hose

Collector Ring Supports (3)

Upper Filter Bag support

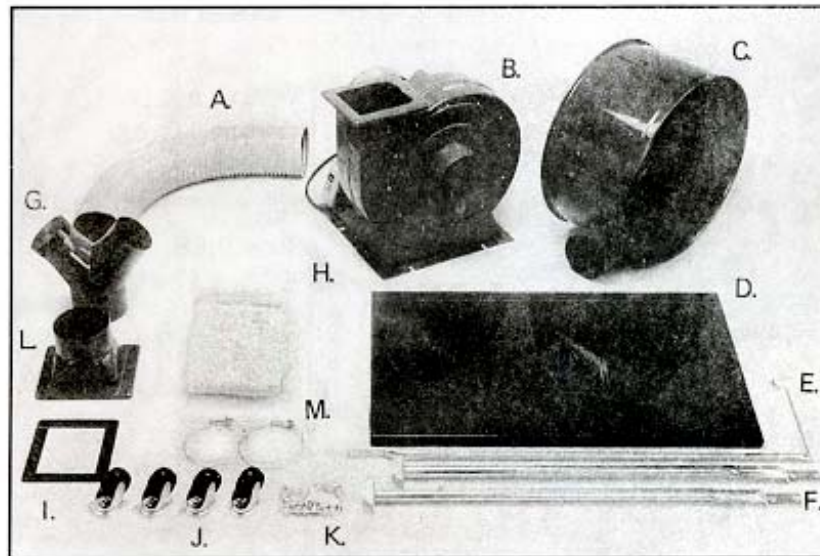
Dual Intake Unit

Castors, Nuts & Bolts Package

Collector Adapter

Filter Bags

Mobile Base



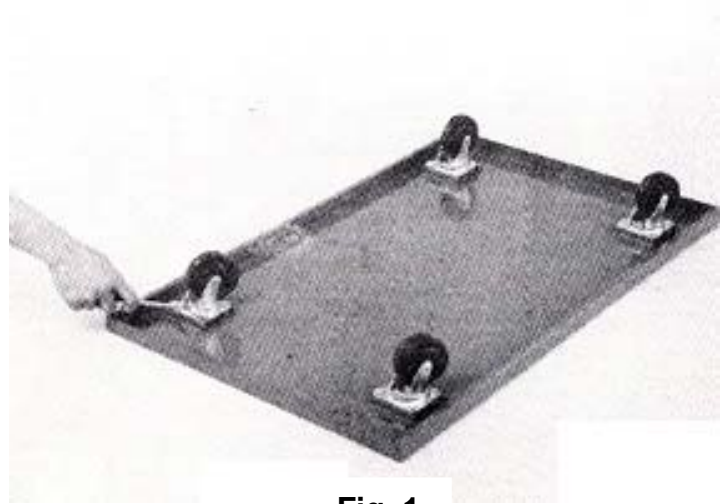
# CT095N DUST COLLECTOR

## ASSEMBLY INSTRUCTIONS

### Base Plate Assembly

Select the Base Plate and turn it upside down. Select the 4 Casters from the Parts Bag and fasten to the Base Plate as illustrated. Select the appropriate nuts, bolts and washers and tighten securely with the Metric Wrench provided.

**Fig. 1**



**Fig. 1**

### Motor/Impeller Assembly

Turn the Base Plate to its upright position and select the Motor/Impeller unit. Place the Motor/Impeller on the Base Plate and align the holes as shown. Select the appropriate nuts, bolts and washers to secure the Motor/Impeller and tighten.

**Fig. 2**



**Fig. 2**

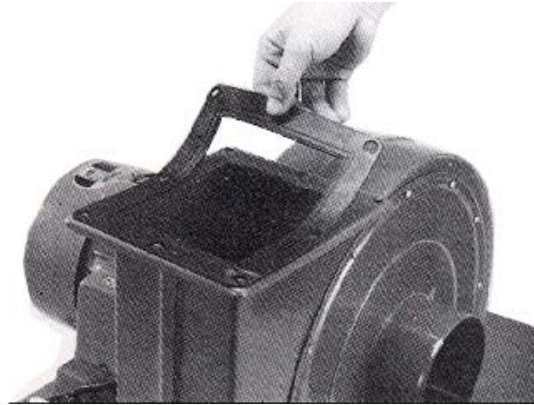


# CT095N DUST COLLECTOR

## ASSEMBLY INSTRUCTIONS, Continued

### Installing the Gasket

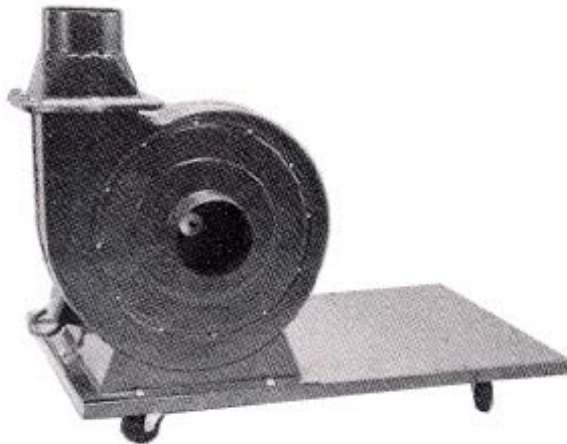
Select the Gasket from the Parts Package and place it on the Motor/Impeller opening as illustrated. **Fig. 3**



**Fig. 3**

### Installing the Collector Adaptor

Select the Collector Adaptor and secure it to the Motor/Impeller unit with the appropriate nuts, bolts and washers. **Fig. 4**



**Fig. 4**

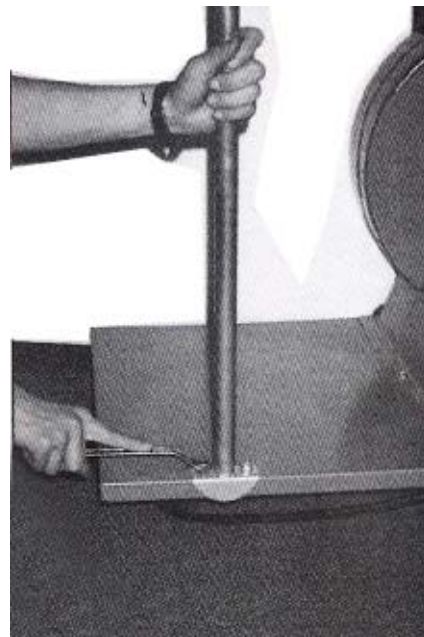
# CT095N DUST COLLECTOR

## ASSEMBLY INSTRUCTIONS, Continued

### Collector Ring Supports

Select the two Collector Ring Supports and fasten them to the Base Plate using the appropriate nuts, bolts and washers from the parts package. Tighten securely.

**Fig. 5**



**Fig. 5**

### Collector Ring

Using the appropriate nuts, bolts and washers, securely fasten the Collector Ring Assembly to the Collector Ring Supports as shown. Be sure that the hose opening of the Collector Ring is positioned as illustrated. Tighten the fasteners securely.

**Fig. 6**



**Fig. 6**

# CT095N DUST COLLECTOR

## ASSEMBLY INSTRUCTIONS, Continued

### Upper Filter Bag Support

Select the Upper Filter Bag Support from the loose parts and assemble it to the Collector Ring and fasten securely with the appropriate nuts, bolts and washers. Fasten the Support as indicated.

**Fig. 7**



**Fig. 7**

## CT095N DUST COLLECTOR ASSEMBLY INSTRUCTIONS, Continued

### Assembling the Collector Hose

Position the Collector Hose and one of the hose clamps over the opening of the collector adapter. Tighten the hose clamp securely with a screwdriver as shown.

**Fig. 8 & 9**



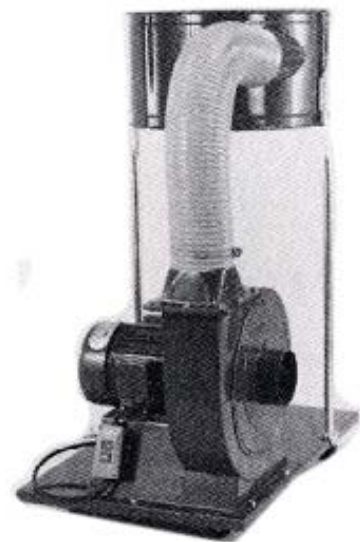
**Fig. 9**

Clamp the other end of the Collector Hose to the opening in the Collector Ring Assembly. Securely tighten the clamp.

Your CT095N Dust Collector should look like the one in **Fig. 10**.



**Fig. 8**



**Fig. 10**

# CT095N DUST COLLECTOR

## ASSEMBLY INSTRUCTIONS, Continued

### Installing Bags

Select the Filter Bag and, using the loop on the top of the bag, hang it from the Upper Bag Support as shown.

**Fig. 11**



**Fig. 11**

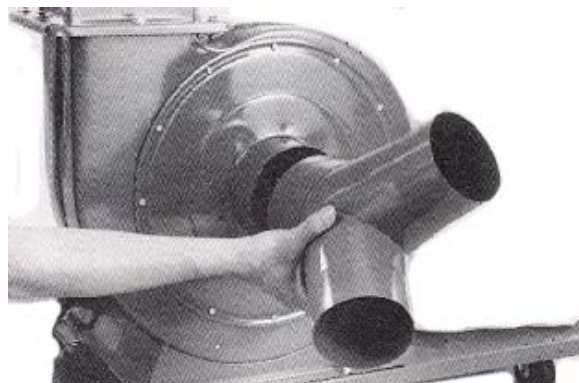
Place the Filter Bag onto the recesses on top of the Collector Ring and secure the bag with the straps. Follow the same procedure with the lower polyethylene collector bags.

## CT095N DUST COLLECTOR ASSEMBLY INSTRUCTIONS, Continued

### Intake Assembly

The dual 4" Intake Unit may now be installed onto the opening of the Motor/Impeller unit. This is a pressure fit but is secured with a self-tapping screw. The dual 4" Intake Unit has a cover cap if only one intake is required for use.

**Fig. 12**



**Fig. 12**

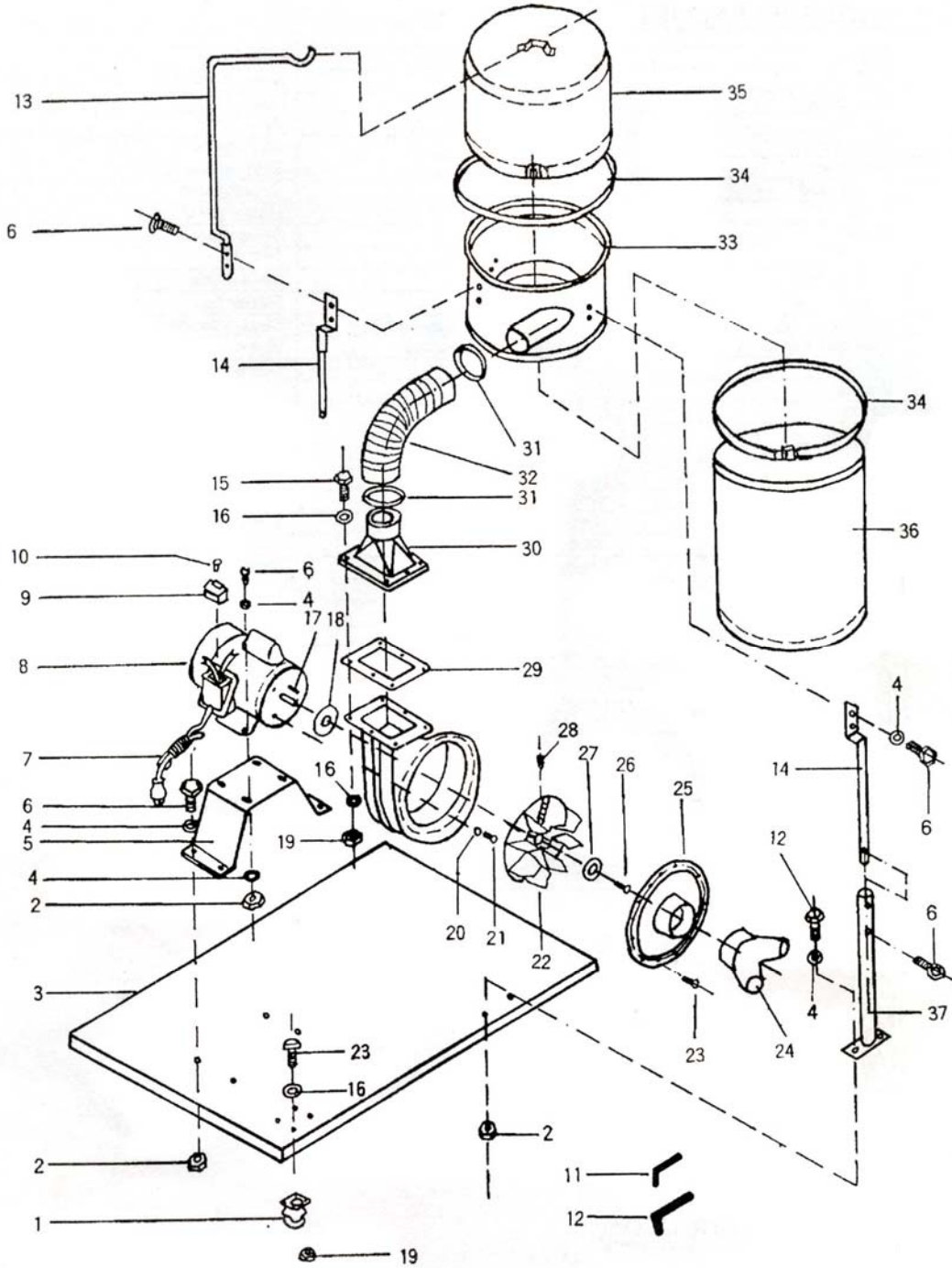
Your Craftex CT095N Dust Collector is now ready for years of excellent use. Before connecting the unit to a power source, be certain that the source is correctly grounded and is of the proper voltage and amperage.

**Fig. 13**



**Fig. 13**

# CT095N DUST COLLECTOR SCHEMATIC DIAGRAM



## CT095N DUST COLLECTOR PARTS LIST

1	Caster
2	Nut
3	Base plate
4	Washer
5	Motor base
6	Screw hex
7	Power cord
8	Motor
9	Switch
10	*****
11	Wrench hex
12	Wrench hex
13	Upper bag support
14	Collector support
15	Screw hex
16	Washer
17	Key
18	Packing
19	Nut
20	Washer
21	Screw hex
22	Turbo fan
23	Screw hex
24	Inlet
25	Inlet cover
26	Screw hex
27	Washer
28	Screw hex
29	Packing
30	Outlet
31	Hose clamp
32	Hose
33	Collector
34	Hose clamp
35	Filter bag
36	Collector bag
37	Collector support
38	*****



## Useful Notes

Wood dust can be very dangerous if one is exposed to it very often. As dust collection has gained popularity over the years, so has consumer knowledge about this concern, but it is always good to know just how dangerous wood dust can be if overexposure and or unsafe woodworking practice takes place.

Health Risk and Hazards that can be caused by exposure to wood dust include the following:

- Asthma
- Eye Irritation
- Hypersensitivity
- Skin Irritation
- Dermatitis
- Acute Airway Obstructions
- Chronic Bronchitis
- Nasal Cancer

## Formulas

**Velocity (FPM)** = Volume (CFM) / Cross Sectional Area (ft.<sup>2</sup>)

**Volume (CFM)** = Velocity (FPM) x Cross Sectional Area (ft.<sup>2</sup>)

**Cross Sectional Area (ft.<sup>2</sup>)** = Volume (CFM) / Velocity (FPM)

**Circle Area** = 3.142 x Radius<sup>2</sup>

**Diameter** = 2 x Radius

## OPTIONAL ACCESSORIES

### PVC FLEX HOSE

PH003 - 3" PVC Pipe ~ per foot, or 50 ft. Roll

PH004 - 4" PVC Pipe ~ per foot, or 50 ft. Roll

PH005 - 5" PVC Pipe ~ per foot, or 50 ft. Roll



### Dust Accessories Kit For 4" Fittings

Model – W1055

Kit #2 to service two machines

Two blast gates, two 10' hoses, one table

saw hood, one universal hood, one "Y"

fitting, ten hose clamps

17 pieces



### Dust Accessories Kit For 4" Fittings

Model – W1054

Kit #1 to service one machine

10' hose, one universal hood, two hose clamp

4 pieces



Call 1-800-461- BUSY(2879) or visit [busybeetools.com](http://busybeetools.com) for current pricing.

## OPTIONAL ACCESSORIES



### **Blast Gates**

W1006 – 3”  
W1007 – 4”  
W1008 – 5”



“T”

W1014 – 3”  
W1013 – 4”



“Y”

W1016 – 3”  
W1015 – 4”  
B2500 – 5”



### **Reducers**

W1011 – 4” - 3”  
W1044 – 4” - 2 ½”  
W1027 – 5” - 4”



### **Elbows**

W1012 – 3”  
W1017 – 4”  
W1029 – 4” with flange



### **Hose Clamps**

PH003CW  
PH004CW  
PH005CW

Call 1-800-461- BUSY(2879) or visit [busybeetools.com](http://busybeetools.com) for current pricing.



## WARRANTY

### **CRAFTEX 3 YEAR LIMITED WARRANTY**

Craftex warrants every product to be free from defects in materials and agrees to correct such defects where applicable. This warranty covers **three years** for parts and 90 days for labour (unless specified otherwise), to the original purchaser from the date of purchase but does not apply to malfunctions arising directly or indirectly from misuse, abuse, improper installation or assembly, negligence, accidents, repairs or alterations or lack of maintenance.

*Proof of purchase is necessary.*

All warranty claims are subject to inspection of such products or part thereof and Craftex reserves the right to inspect any returned item before a refund or replacement may be issued.

This warranty shall not apply to consumable products such as blades, bits, belts, cutters, chisels, punches etceteras. Craftex shall in no event be liable for injuries, accidental or otherwise, death to persons or damage to property or for incidental contingent, special or consequential damages arising from the use of our products.

## RETURNS, REPAIRS AND REPLACEMENTS

To return, repair, or replace a Craftex product, you must visit the appropriate Busy Bee Tools showroom. Craftex is a brand of equipment that is exclusive to Busy Bee Tools.

For replacement parts directly from Busy Bee Tools, for this machine, please call 1-800-461-BUSY(2879), and have your credit card and part number handy.

- All returned merchandise will be subject to a minimum charge of 15% for re-stocking and handling with the following qualifications.
- Returns must be pre-authorized by us in writing.
- **We do not accept collect shipments.**
- Items returned for warranty purposes must be insured and shipped pre-paid to the nearest warehouse .
- Returns must be accompanied with a copy of your original invoice as proof of purchase. Returns must be in an un-used condition and shipped in their original packaging a letter explaining your reason for the return. Incurred shipping and handling charges are not refundable.
- Busy Bee will repair or replace the item at our discretion and subject to our inspection.
- Repaired or replaced items will be returned to you pre-paid by our choice of carriers.
- Busy Bee reserves the right to refuse reimbursement or repairs or replacement if a third party without our prior authorization has carried out repairs to the item.
- Repairs made by Busy Bee are warranted for 30 days on parts and labour.
- Any unforeseen repair charges will be reported to you for acceptance prior to making the repairs.
- The Busy Bee Parts & Service Departments are fully equipped to do repairs on all products purchased from us with the exception of some products that require the return to their authorized repair depots. A Busy Bee representative will provide you with the necessary information to have this done.
- For faster service it is advisable to contact the nearest Busy Bee location for parts availability prior to bringing your product in for repairs.





