



## OWNER'S MANUAL



## 165 PCS ROTARY TOOL SET



COPYRIGHT © 2006 BY CRAFTEX INDUSTRIES INC.

NO PORTION OF THIS MANUAL MAY BE REPRODUCED WITHOUT  
THE WRITTEN CONSENT OF CRAFTEX INDUSTRIES INC.



# CT106 – 165 PCS ROTARY TOOL SET

## GENERAL SAFETY INSTRUCTIONS

**EXTREME CAUTION SHOULD BE USED IN OPERATING ALL POWER TOOLS. KNOW YOUR POWER TOOL, BE FAMILIAR WITH ITS OPERATION. READ THE OWNER'S MANUAL AND PRACTICE SAFE USAGE PROCEDURES AT ALL TIMES.**

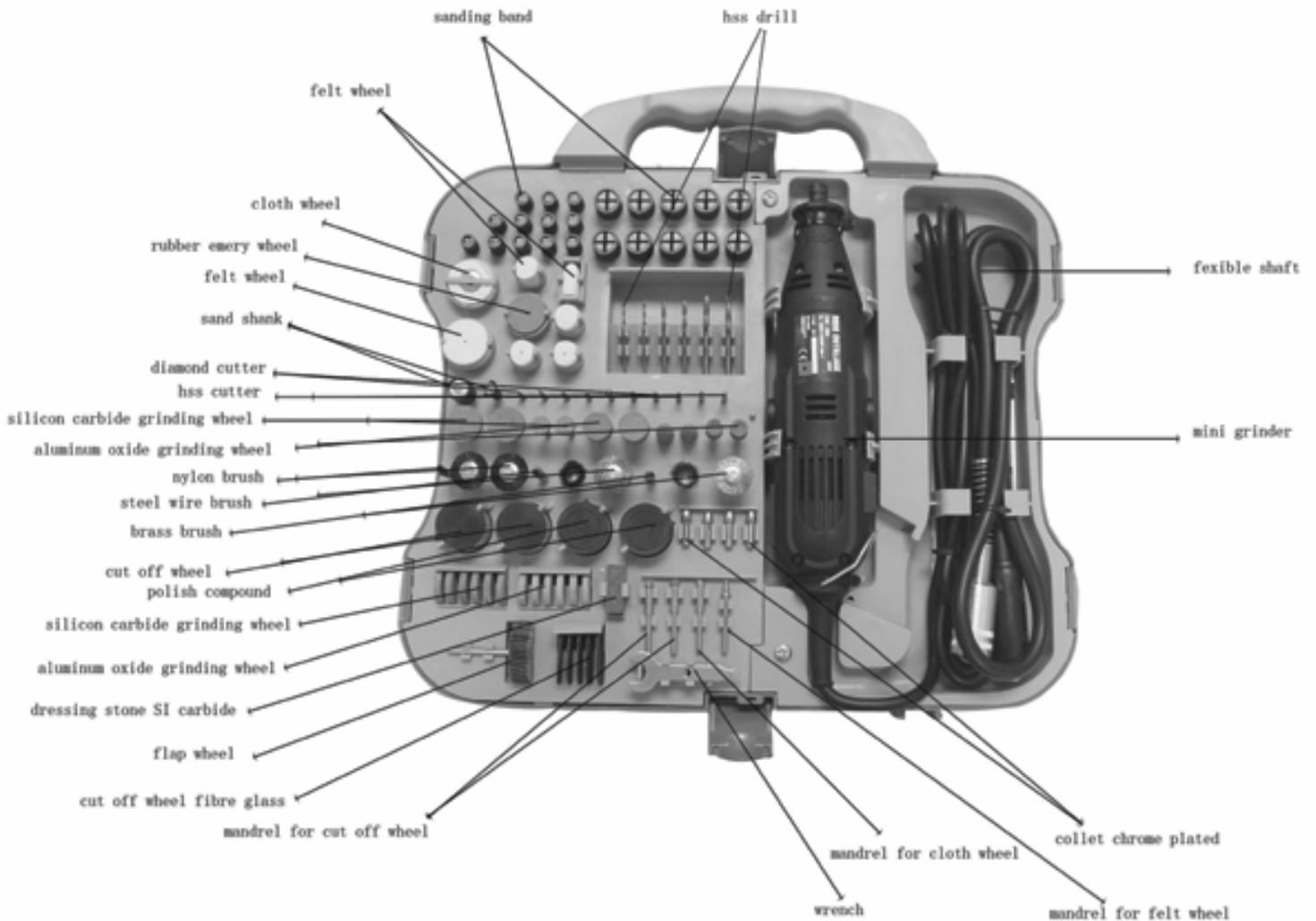
- ❑ **CONNECT** your machine **ONLY** to the matched and specified power source.
- ❑ **WEAR SAFETY GLASSES, RESPIRATORS, HEARING PROTECTION** and **SAFETY SHOES** when operating heavy machinery. Always wear safety glasses.
- ❑ **DO NOT** wear loose clothing or jewellery when operating machinery.
- ❑ **A Safe Environment is important.** Keep the area free of dust, dirt and other debris in the immediate vicinity of the machine.
- ❑ **BE ALERT!** Do Not Use prescription or other drugs that may affect your ability or judgement to safely use this machine.
- ❑ **DISCONNECT** the power source when making adjustments or repairs.
- ❑ **NEVER** leave an operating tool unattended.
- ❑ **ALWAYS** keep all safety guards in place and ensure their proper function.
- ❑ **ALWAYS** make sure that any tools used for adjustments are removed before operating the machine.
- ❑ **ALWAYS** keep bystanders safely away while operating machinery.
- ❑ **THINK SAFETY. WORK SAFELY.** Never attempt a procedure if it does not feel safe or comfortable.

# CT106 – 165 PCS ROTARY TOOL SET

As part of the growing line of Craftex Tools & Equipment, we are proud to offer the CT106 Rotary Tool Kit. The Craftex name guarantees Craft Excellence. By following the instructions and procedures laid out in this owner's manual, you will receive years of excellent service and satisfaction. The CT106 is a professional tool and like all power tools, proper care and safety procedures should be adhered to.

## SPECIFICATIONS & ILLUSTRATED FEATURES

**Cycle: 60Hz**  
**Power: 130W**  
**RPM: 8000-30000min<sup>-1</sup>**



# **CT106 – 165 PCS ROTARY TOOL SET**

## **Functional Description**

- The rotary tool is a multi-purpose tool able to cut, drill, polish, grind sand engrave and many other uses based on the accessory attached to the collet. It works on a high speed, low torque principle where the revolution can attain 30,000 rpm compared to a typical 2.800 rpm for an electric drill. The speed combined with the proper accessory does the work. The users simply hold and guide it to do the job. Please familiarize yourself with the major components of this tool before use.

Check for damage to the tool parts or accessories, which may have occurred during transport. Take the time to thoroughly read and understand this manual prior to operation

## **Work Area**

- Keep your work area clean and well lit. Cluttered benches and dark areas invite accidents.
- Do not operate power tools in explosive atmospheres, such as in the presence of flammable liquids, gases, or dust. Power tools create sparks, which may ignite the dust or fumes.
- Keep bystanders, children, and visitors away while operating a power tool. Distractions can cause you to lose control.

## **Electric Safety**

- Grounded tools must be plugged into an outlet properly installed and grounded in accordance with all codes and ordinances. Never remove the grounding prong or modify the plug in any way. Do not use any adapter plugs. Check with a qualified electrician if you are in doubt as to whether the outlet is properly grounded. If the tool should electrically malfunction & break down, grounding provides a low resistance path to carry electricity away from the user.
- Double insulated tools are equipped with a polarized plug. This plug will fit in a polarized outlet only one way. If the plug does not fit fully in the outlet, reverse the plug. If it still does not fit, contact a qualified electrician to install a polarized outlet. Do not change the plug in any way. Double insulation eliminates the need for the three wire grounded power cord and grounded power supply systems.

- **Avoid body contact with grounded surfaces such as pipes, radiators and refrigerators. There is an increased risk of electric shock if your body is grounded.**
- **Don't expose power tools to rain or wet conditions. Water entering a power tool will increase the risk of electric shock.**
- **When operating a power tools outside, use an outdoor extension cord marked "W-A" or "W". These cords are rated for outdoor use and reduce the risk of electric shock.**

### Personal Safety

- **Avoid accidental starting. Be sure switch is off before plugging in. Carrying tools with your finger on the switch or plugging in tools that have the switch on invites accidents.**
- **Remove adjusting keys or switches before turning the tool on. A wrench or a key that is left attached to a rotating part of the tool may result in personal injury.**
- **Do not over reach. Keep proper footing and balance at all times. Proper footing and balance enables better control on the tool in unexpected situations.**

### Tool Use and Care

- **Use clamps or other practical ways to secure and support the work piece to a stable platform. Holding the work by hand or against your body is unstable and may lead to loss of control.**
- **Do not force tools. Use the correct tools for your application. The correct tool will do the job better and safer at the rate for which this designed.**
- **Ensure that bits are properly secured into the tool, using the proper tools. Make sure the collet lock is used.**
- **High RPM use is mainly used for carving, grinding, routing and cutting. The rotary unit will remove material faster at a higher RPM**
- **Low RPM use is mainly used for grinding and working with materials that have low melting points. Low RPM use is also great for buffing.**

- **The flex shaft is used for getting into tight spaces and reaching otherwise tough angles and corners.**
- **Do not operate the flex shaft with sharp bends to the shaft.**
- **To use, unplug the power first! Loosen the collet nut. Slide the inner spiral out of the flex shaft. Thread the flex shaft onto the rotary unit. Insert a tool bit onto the flex shaft. Make sure the collet is securely fastened before use. Do not use when collet has not been tightened.**
- **Do not use tool if switch does not turn it on or off. Any tool that cannot be controlled with the switch is dangerous and must be repaired.**
- **Disconnect the plug from the power source before making any adjustments, changing accessories, or storing the tool. Such preventive safety measures reduce the risk of starting the tool accidentally.**
- **Store idle tools out reach of children and other untrained persons. Tools are dangerous in the hands of untrained users.**
- **Maintain tools with care. Keep cutting tools sharp and clean. Properly maintained tools with sharp cutting edges are less likely to bind and are easier to control.**
- **Check for misalignment or binding of moving parts, breakage of parts, and any other condition that may affect the tools operation. If damaged, have the tool serviced before using. Poorly maintained tools cause many accidents.**
- **Use only accessories that are recommended by the manufacturer for your model. Accessories that may be suitable for one tool may become hazardous when used on another tool.**

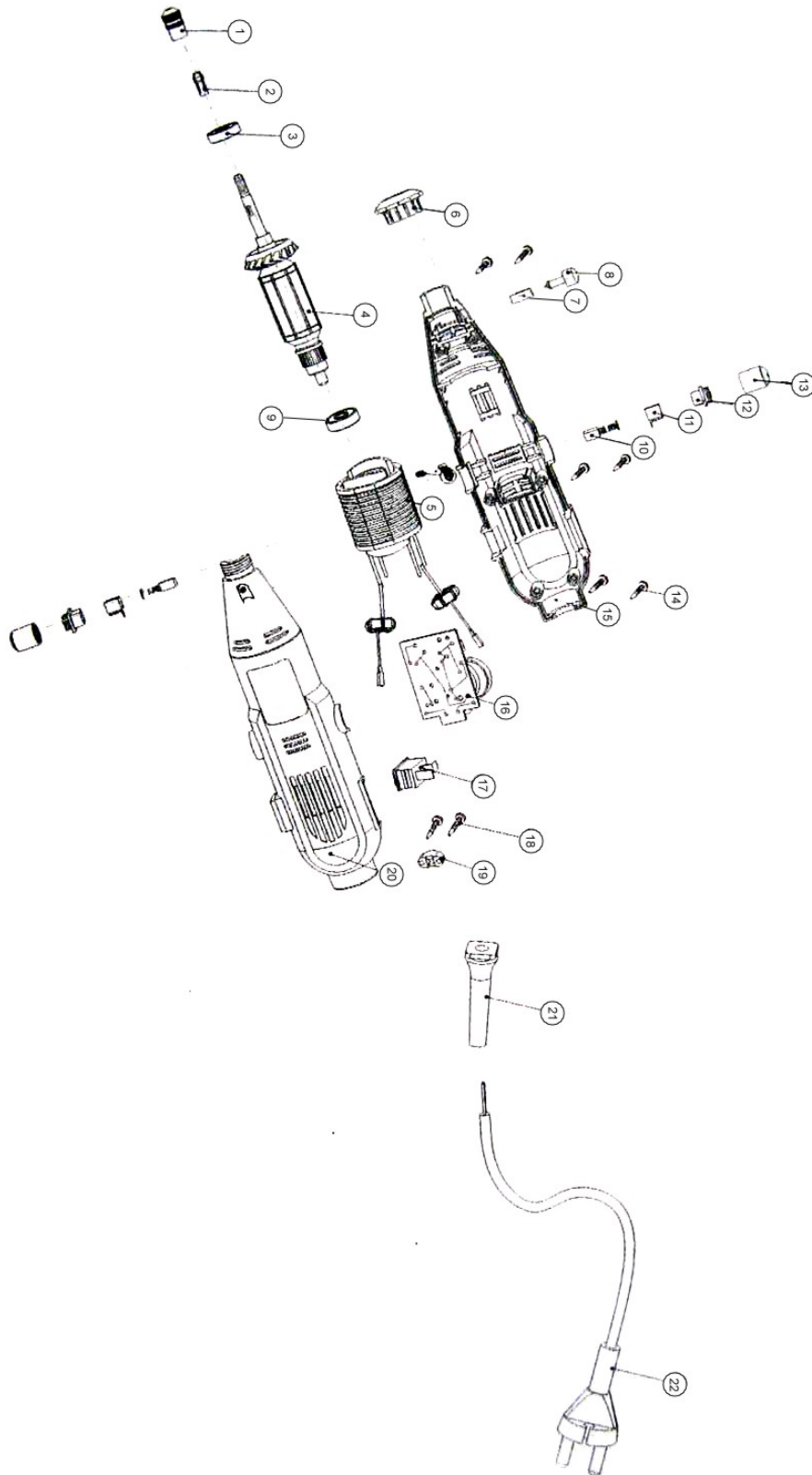
### Maintenance

- After each use, the motor housing should be wiped clean and the housing as well as any used tool bits should be blown with compressed air.
- Proper care will lead to an extended life of the tool

### Additional Safety Rules For Rotary Tools

- Hold tool by insulated gripping surfaces when performing an operation where the cutting tool may contact hidden wiring or its own cord. Contact with a "live" wire will make exposed metal parts of the tool "live" and shock the operator.
- Remember it is ultimately the responsibility of the owner to use the rotary tool properly.

# CT106 – 165 PCS ROTARY TOOL SET SCHEMATIC DIAGRAM





# CT106 – 165 PCS ROTARY TOOL SET

## PARTS LIST

NO.	NAME	QTY	NO.	NAME	QTY
1	COLLET NUT	1	12	BRUSH BASE	2
2	BRASS COLLET	1	13	BRUSH CAP	2
3	BEARING 698zz	1	14	SCREW M3*15	6
4	ROTOR	1	15	RIGHT HOUSING	1
5	STATOR	1	16	WIRE BOARD	1
6	LOCKING SLEEVE	1	17	SWITCH	1
7	PREVENT SPRING	1	18	SCREW M3*12	2
8	SPINDLE LOCK BUTTON	1	19	PLACE BOARD	1
9	BEARING 626zz	1	20	LEFT HOUSING	1
10	BRUSH	2	21	CORD SLEEVE	1
11	BRUSH SPRING	2	22	PLUG	1



## CRAFTEX 1 YEAR LIMITED WARRANTY

Crafttex warrants every product to be free from defects in materials and agrees to correct such defects where applicable. This warranty covers **one year** for parts and 90 days for labour (unless specified otherwise), to the original purchaser from the date of purchase but does not apply to malfunctions arising directly or indirectly from misuse, abuse, improper installation or assembly, negligence, accidents, repairs or alterations or lack of maintenance.

*Proof of purchase is necessary.*

All warranty claims are subject to inspection of such products or part thereof and Crafttex reserves the right to inspect any returned item before a refund or replacement may be issued.

This warranty shall not apply to consumable products such as blades, bits, belts, cutters, chisels, punches etceteras. Crafttex shall in no event be liable for injuries, accidental or otherwise, death to persons or damage to property or for incidental contingent, special or consequential damages arising from the use of our products.

## RETURNS, REPAIRS AND REPLACEMENTS

To return, repair, or replace a Crafttex product, you must visit the appropriate Busy Bee Tools showroom. Please call 1-800-461-BUSY.

Crafttex is a brand of equipment that is exclusive to Busy Bee Tools.

For replacement parts directly from Busy Bee Tools, for this machine, please call 1-800-461-BUSY (2879), and have your credit card and part number handy.

- All returned merchandise may be subject to a minimum charge of 15% for re-stocking and handling with the following qualifications.
- Returns must be pre-authorized by us in writing.
- We do not accept *collect* shipments.
- Items returned for warranty purposes must be insured and shipped pre-paid to the nearest warehouse.
- Returns must be accompanied with a copy of your original invoice as proof of purchase. Returns must be in an un-used condition and shipped in their original packaging a letter explaining your reason for the return. Incurred shipping and handling charges are not refundable.
- Busy Bee will repair or replace the item at our discretion and subject to our inspection.
- Repaired or replaced items will be returned to you pre-paid by our choice of carriers.
- Busy Bee reserves the right to refuse reimbursement or repairs or replacement if a third party without our prior authorization has carried out repairs to the item.
- Repairs made by Busy Bee are warranted for 30 days on parts and labour.
- Any unforeseen repair charges will be reported to you for acceptance prior to making the repairs.
- The Busy Bee Parts & Service Departments are fully equipped to do repairs on all products purchased from us with the exception of some products that require the return to their authorized repair depots. A Busy Bee representative will provide you with the necessary information to have this done.
- For faster service it is advisable to contact the nearest Busy Bee location for parts availability prior to bringing your product in for repairs.