



12" VERTICAL METAL CUTTING BANDSAW



COPYRIGHT © 2006 BY CRAFTEX INDUSTRIES INC.

NO PORTION OF THIS MANUAL MAY BE REPRODUCED WITHOUT
THE WRITTEN CONSENT OF CRAFTEX INDUSTRIES INC.



INDEX

INTRODUCTION.....	PAGE 3
GENERAL SAFETY INSTRUCTIONS.....	PAGE 4
ASSEMBLY & OPERATION	
CLEANING.....	PAGE 5
PUMP.....	PAGE 5
WORKTABLE.....	PAGE 6
MOTORBELTS.....	PAGE 6
DRIVE PULLEY BELTS.....	PAGE 6
TRANSMISSION.....	PAGE 6
BLADE CHANGE.....	PAGE 7
SCHEMATIC DIAGRAMS	
BODY SCHEMATIC.....	PAGE 8
INTERNAL SCHEMATIC.....	PAGE 9
WORK TABLE.....	PAGE 10
PARTS LISTINGS.....	PAGE 11 - 13
WARRANTY.....	PAGE 14

INTRODUCTION

As part of the growing line of Crafttex metalworking equipment, we are proud to offer the CT116, 12" Vertical Metal Cutting Band saw. The Crafttex name guarantees Crafttex Excellence. By following the instructions and procedures laid out in this owner's manual, you will receive years of excellent service and satisfaction. The CT116 is a professional tool and like all power tools, proper care and safety procedures should be adhered to.

Features

- The Crafttex CT116 is a heavy-duty 12" Metal Cutting Band Saw.
- Motor- 3/4 HP, Variable Speed
- Motor Speed – 1720 RPM.
- Power Transfer – Twin V-Belt to Transmission to Twin V-Belt.
- Blade Speed – 89, 159, 229, 332 FPM.
- Table Size -15 ¾" x 19 ½".
- Table Material - Surface Ground Cast Iron.
- Table Height – 35 7/16".
- Table Tilts – 15 Left, 45 right, 10 Forward and Backward.
- Throat – 12 1/8".
- Cutting Capacity – 5 1/8".
- Blade Size – 1/8" – ½".
- Blade Length – 94 ¼" – 98 ¼".
- Wheel Brush
- Work Light
- Overall Height – 59 7/8".
- Net Weight – 540 Lbs. (245 KGS)

GENERAL SAFETY INSTRUCTIONS

EXTREME CAUTION SHOULD BE USED IN OPERATING ALL POWER TOOLS. KNOW YOUR POWER TOOL, BE FAMILIAR WITH ITS OPERATION. READ THE OWNER'S MANUAL AND PRACTICE SAFE USAGE PROCEDURES AT ALL TIMES.

- ❑ **CONNECT** your machine **ONLY** to the matched and specified power source.
- ❑ **WEAR SAFETY GLASSES, RESPIRATORS, HEARING PROTECTION** and **SAFETY SHOES** when operating heavy machinery. **Always wear safety glasses.**
- ❑ **DO NOT** wear loose clothing or jewellery when operating machinery.
- ❑ **A Safe Environment is important.** Keep the area free of dust, dirt and other debris in the immediate vicinity of the machine.
- ❑ **BE ALERT!** Do Not Use prescription or other drugs that may affect your ability or judgement to safely use this machine.
- ❑ **DISCONNECT** the power source when changing drill blades, belts or making other adjustments or repairs.
- ❑ **NEVER** leave an operating tool unattended.
- ❑ **NEVER** reach over the table when the tool is in operation.
- ❑ **ALWAYS** keep blades sharp and properly aligned.
- ❑ **ALWAYS** keep all safety guards in place and ensure their proper function.
- ❑ **ALWAYS** make sure that any tools used for adjustments are removed before operating the machine.
- ❑ **ALWAYS** secure your work with the appropriate clamps or vises if necessary
- ❑ **ALWAYS** keep bystanders safely away while operating machinery.
- ❑ **THINK SAFETY. WORK SAFELY.** Never attempt a procedure if it does not feel safe or comfortable.

CT116 Metal Cutting Band Saw

Assembly & Operation

Your Craftex CT116 Metal Cutting Band Saw has been shipped complete and there is very little to do regarding the assembly of the machine.

Carefully, unpack the band saw, but leave it on the pallet until you have placed the machine in its final position. Please remember that the machine is very heavy and you should always use proper methods when it comes to moving the band saw. Consideration should be given as to where you place your Craftex band saw. Due to the weight, the floor should be solid and level and there should be plenty of room to work.

Cleaning

The CT116 band saw comes with a protective coating on the cast-iron components. This coating must be removed from these surfaces before you put the saw to use. Commercial degreaser, kerosene or similar solvent can be used to remove the grease. **Do not** let the solvent touch any of the rubber parts or belts otherwise they may erode.

The Pump

The oil cup is located at the back of the band saw. Add 2 – 4 cc of machine oil to the machine before you use. This should be done every so often, or when you begin to hear a light noise from the bottom wheel.

CT116 Metal Cutting Band Saw Operation

Work Table

The work surface area of the table is 15 3/4" x 19 1/2". The table will tilt 45 degrees to the right and 15 degrees to the left. To adjust the table, loosen the nut located under the table seat (B-13). Once you have the table to the angle you desire tighten the nut. A scale and pointer are located under the worktable for exact measurement.

Change Motor Belts

To change the belts you must remove the bolts on the panel (15) located at the rear of the machine. Now that you have removed the panel, loosen the bolts at the base of the motor. This will let the motor slide towards the transmission housing resulting in the belts loosening. Remove the old belts and replace with new. Slide motor back into original position and tighten the bolts.

Drive Pulley Belts

Loosen the pivot locking bolts. Then loosen the lower tracking bolt. This will allow the drive pulley wheel to tilt forward loosening the tension on the belts. Remove the old belts and replace with new. Tighten the lower tracking bolt and the pivot locking bolts to their original position.

Transmission

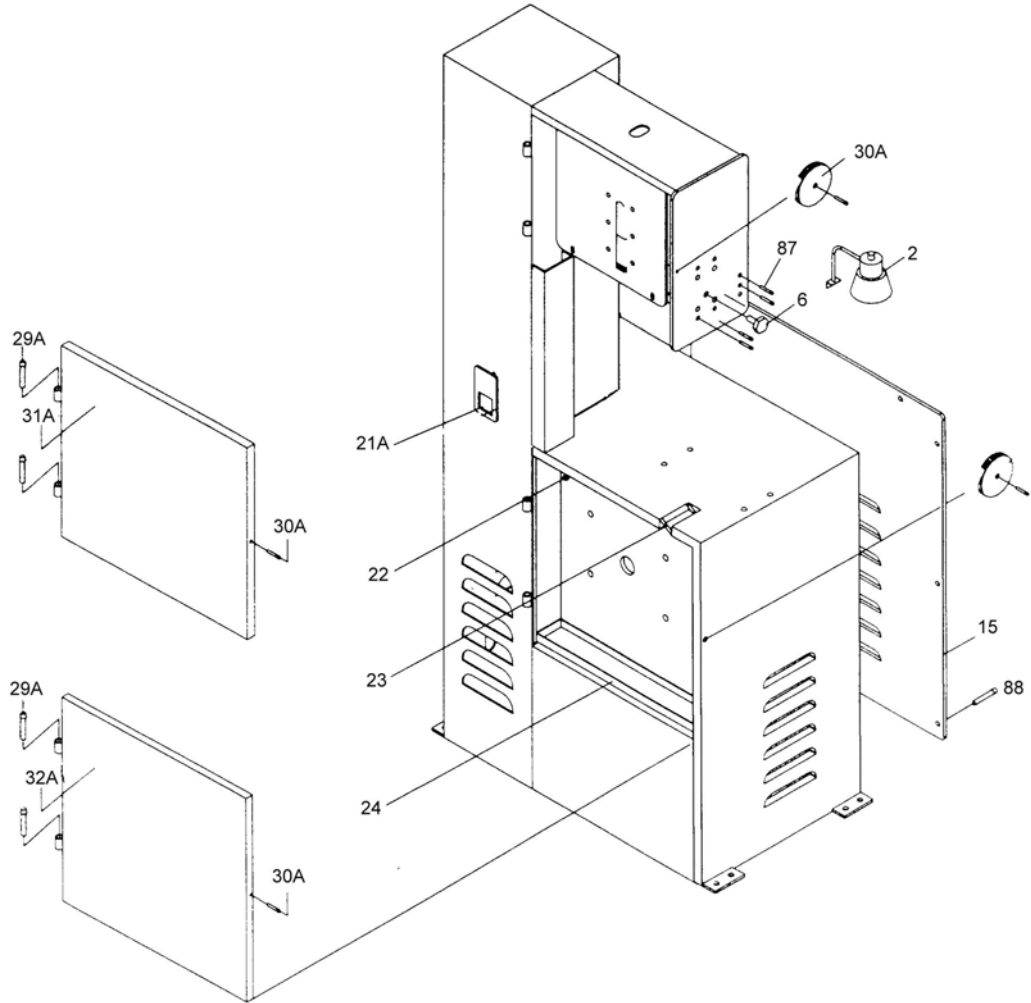
The CT116 comes with a 4speed manual transmission. The transmission handle is located on the left side of the machine. To change the speed, turn the power switch on and pull the handle to the desired speed.

CT116 Metal Cutting Band Saw Operation

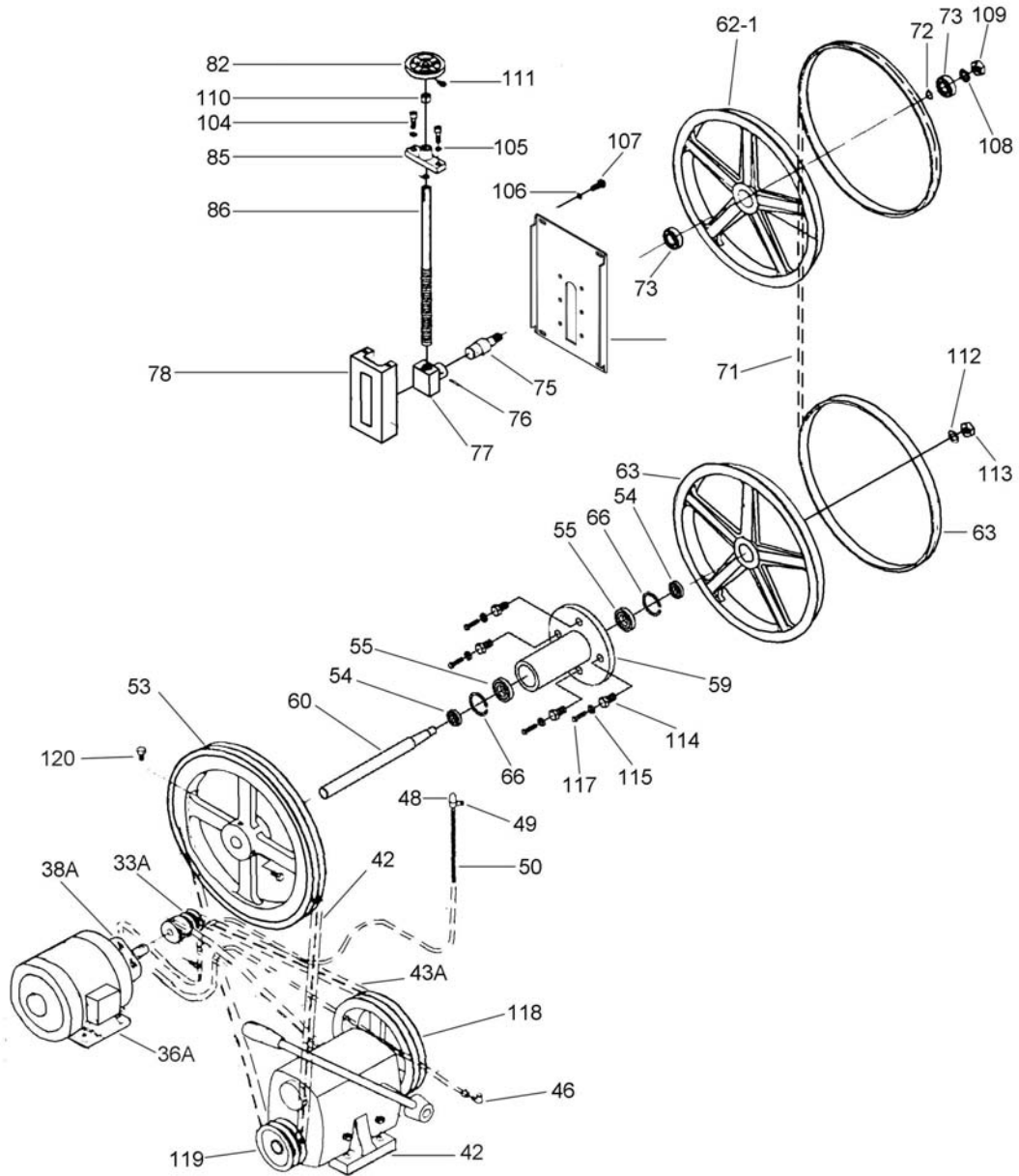
Blade Change

To change the blade you must first open the upper and lower doors to the band saw. Now you must loosen the tension from the blade by turning the hand wheel clock-wise. The hand wheel is located on the top of the machine (82). As the tension loosens, you will be able to remove the blade from the upper and lower wheels. You must then slide the blade through the slot in the table to finally remove the blade. To install a blade and follow the steps above in reverse order. Make sure that the blade is placed between the upper and lower guide blocks.

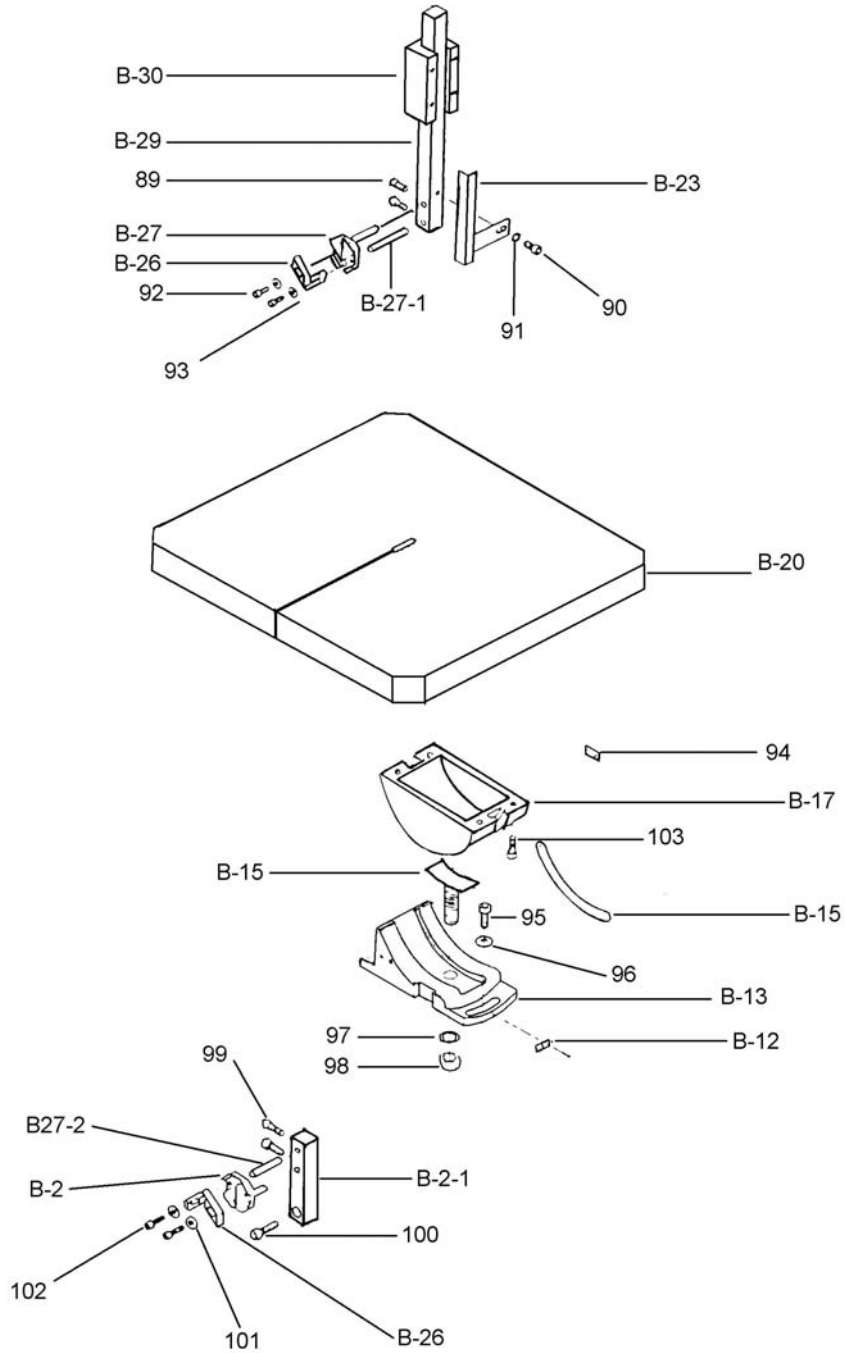
SCHEMATIC DIAGRAM



SCHEMATIC DIAGRAM



SCHEMATIC DIAGRAM





CRAFTEX 2 YEAR LIMITED WARRANTY

Craftex warrants every product to be free from defects in materials and agrees to correct such defects where applicable. This warranty covers **two years** for parts and 90 days for labour (unless specified otherwise), to the original purchaser from the date of purchase but does not apply to malfunctions arising directly or indirectly from misuse, abuse, improper installation or assembly, negligence, accidents, repairs or alterations or lack of maintenance.

Proof of purchase is necessary.

All warranty claims are subject to inspection of such products or part thereof and Craftex reserves the right to inspect any returned item before a refund or replacement may be issued.

This warranty shall not apply to consumable products such as blades, bits, belts, cutters, chisels, punches etceteras. Craftex shall in no event be liable for injuries, accidental or otherwise, death to persons or damage to property or for incidental contingent, special or consequential damages arising from the use of our products.

RETURNS, REPAIRS AND REPLACEMENTS

To return, repair, or replace a Craftex product, you must visit the appropriate Busy Bee Tools showroom or call 1-800-461-BUSY. Craftex is a brand of equipment that is exclusive to Busy Bee Tools.

For replacement parts directly from Busy Bee Tools, for this machine, please call 1-800-461-BUSY (2879), and have your credit card and part number handy.

- All returned merchandise will be subject to a minimum charge of 15% for re-stocking and handling with the following qualifications.
- Returns must be pre-authorized by us in writing.
- We do not accept *collect* shipments.
- Items returned for warranty purposes must be insured and shipped pre-paid to the nearest warehouse
- Returns must be accompanied with a copy of your original invoice as proof of purchase. Returns must be in an un-used condition and shipped in their original packaging a letter explaining your reason for the return. Incurred shipping and handling charges are not refundable.
- Busy Bee will repair or replace the item at our discretion and subject to our inspection.
- Repaired or replaced items will be returned to you pre-paid by our choice of carriers.
- Busy Bee reserves the right to refuse reimbursement or repairs or replacement if a third party without our prior authorization has carried out repairs to the item.
- Repairs made by Busy Bee are warranted for 30 days on parts and labour.
- Any unforeseen repair charges will be reported to you for acceptance prior to making the repairs.
- The Busy Bee Parts & Service Departments are fully equipped to do repairs on all products purchased from us with the exception of some products that require the return to their authorized repair depots. A Busy Bee representative will provide you with the necessary information to have this done.
- For faster service it is advisable to contact the nearest Busy Bee location for parts availability prior to bringing your product in for repairs.

