



CT140N

3-HP DUST CYCLONE

User Manual

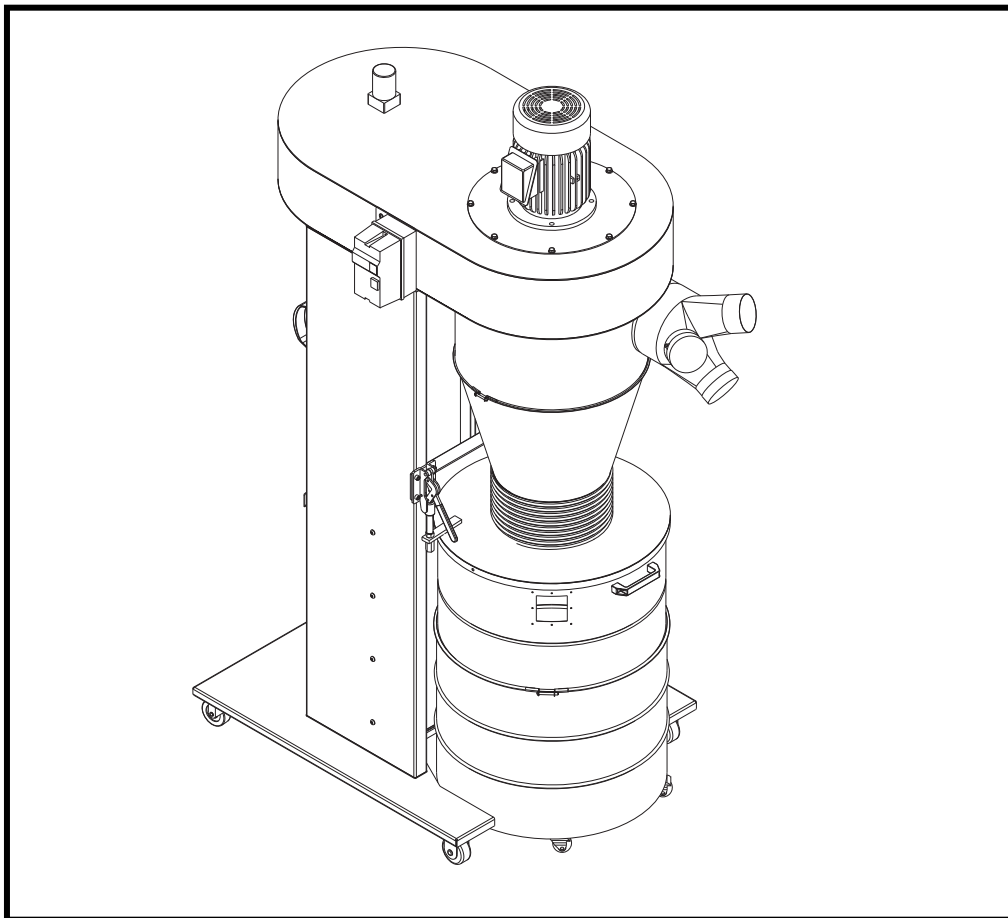


Table of Contents

General Safety Instructions	3
Specific Safety Instructions	4
CT140N Features	5
Physical Features	6
Un-packing & Inventory	7
Proper Grounding	8
Assembly	9
Casters & Stand Supports	9
Canister Filter & Main Housing	9
Collection Drum & Y-Inlet	10
Magnetic Switch, Plastic Bag & Handles	10
Remote Controller (Optional)	11
Remote Controller Resetting Procedure	11
Test Run	11
CT140N Parts Breakdown	12
CT140N Parts List	13-14
Warranty	15

General Safety Instructions for Machineries

Extreme caution should be used when operating all power tools. Know your power tool, be familiar with its operation, read through the owner's manual and practice safe usage procedures at all times.

- ❖ **CONNECT** your machine ONLY to the matched and specific power source.
- ❖ **ALWAYS** wear safety glasses respirators, hearing protection and safety shoes, when operating your machine.
- ❖ **DO NOT** wear loose clothing or jewelry when operating your machine.
- ❖ **GROUND ALL TOOLS** if tool is equipped with three-prong plug, it should be plugged into a three-hole electrical receptacle. If an adapter is used to accommodate a two-prong receptacle, the adapter plug must be attached to a known ground. Never remove the third prong.
- ❖ **A SAFE ENVIRONMENT** is important. Keep the area free of dust, dirt and other debris in the immediate vicinity of your machine.
- ❖ **KEEP CHILDREN AND VISITORS AWAY.** All children and visitors should be kept a safe distance from work area.
- ❖ **NEVER** leave a tool unattended while it is in operation.
- ❖ **DON'T OVERREACH.** Keep proper footing and balance at all times.
- ❖ **DISCONNECT** the power source when changing drill bits, hollow chisels, router bits, shaper heads, blades, knives or making other adjustments or repairs.
- ❖ **SECURE WORK.** Use clamps or a vise to hold work when practical. It's safer than using your hand and frees both hands to operate tool.
- ❖ **BE ALERT! DO NOT** use prescription or other drugs that may affect your ability or judgment to safely use your machine.
- ❖ **MAINTAIN TOOLS IN TOP CONDITION.** Keep the blades sharp and aligned. Follow instructions for lubricating and changing accessories.
- ❖ **DISCONNECT TOOLS** before servicing and when changing accessories such as blades, bits, cutters, etc.
- ❖ **ALWAYS** keep all safety guards in place and ensure their proper function.
- ❖ **WARNING:** The dust generated by certain woods and wood products can be injurious to your health. **ALWAYS** operate machinery in well ventilated areas and provide for proper dust removal. Use wood dust collection systems whenever possible.

CT140N-3HP Dust Cyclone Specific Safety Instructions

Read and understand the instruction manual before operating the dust collector. Basic precautions listed below should always be followed when using your dust collector to reduce the risk of injury, electrical shock or fire.

- ❖ **DO NOT** leave the dust cyclone plugged into the electrical outlet. Unplug dust cyclone from outlet when not in use and before servicing, changing canister, unclogging and cleaning.
- ❖ **ALWAYS** turn the power switch “OFF” before unplugging the dust cyclone.
- ❖ **ALL** electrical connections and wiring should be made by qualified personnel only.
- ❖ **DO NOT** pull the dust cyclone by the power cord. NEVER allow the power cord to come in contact with sharp edges, hot surfaces, oil or grease.
- ❖ **REPLACE** a damaged cord immediately. DO NOT use a damaged cord or plug. If the dust cyclone is not operating properly, or has been damaged, left outdoors or has been in contact with water, return it to an Authorized Service Center for service.
- ❖ **ALWAYS** be sure that the collection and filter bags are securely fastened to the Collector Body.
- ❖ **PERIODICALLY INSPECT** dust and filter bags for any cuts, rips or tears.
- ❖ **Disconnect** the machine from the power source before servicing.
- ❖ **NEVER** attempt to use this dust cyclone to collect metal materials such as screws, nails or other metal parts.
- ❖ **TO REDUCE** the risk of electrical shock, do not use the dust collector to pick up flammable or combustible liquids, such as gasoline.
- ❖ **NEVER** use the dust cyclone to dissipate fumes or smoke. Never pick-up anything that is burning or smoking, such as cigarettes, matches or hot ashes.
- ❖ **DO NOT** use the dust cyclone as a toy. Keep children away from the dust collector.
- ❖ **ALWAYS** Keep hair, loose clothing, fingers, and all body parts away from openings and moving parts of the dust cyclone.
- ❖ **DO NOT** use the dust cyclone without a filter bag and dust collection bag in place and properly secured.
- ❖ **DO NOT** operate the dust cyclone with unused dust intake ports uncapped. ALWAYS cover exposed dust intake ports.
- ❖ **CONNECT** dust collector to a properly grounded outlet only. See Grounding Instructions.

IMPORTANT: The safety instructions given above can not be complete because the environment in every shop is different. Always consider safety first as it applies to your individual working conditions.



DUST CYCLONE FEATURES

MODEL CT140N-3HP DUST CYCLONE

As part of the growing line of Crafttex woodworking equipment, we are proud to offer the CT140N. This new and improved version features a remote control and motorized automatic filter that ensures your pleated filter is always clean and ready for the next use. The Crafttex name guarantees Craft Excellence. By following the instructions and procedures laid out in this owner's manual, you will receive years of excellent service and satisfaction. The CT140N is a professional tool and like all power tools, proper care and safety procedures should be adhered to.

- ❑ Motor 3HP/220V/60Hz/ 1 Phase
- ❑ AMP 15.1 A
- ❑ Motor Speed 3450 RPM

- ❑ Suction Capacity 2300 CFM
- ❑ Static Pressure 16.2 Inch H2O
- ❑ Impeller Size 15.8"

- ❑ Inlet Size 8"

- ❑ Switch Magnetic Switch

- ❑ Drum Capacity 55 Gallon

- ❑ Length 47"
- ❑ Width 34"
- ❑ Height 84"

- ❑ Canister Filter 1 Micron (Spun Bond Polyester)

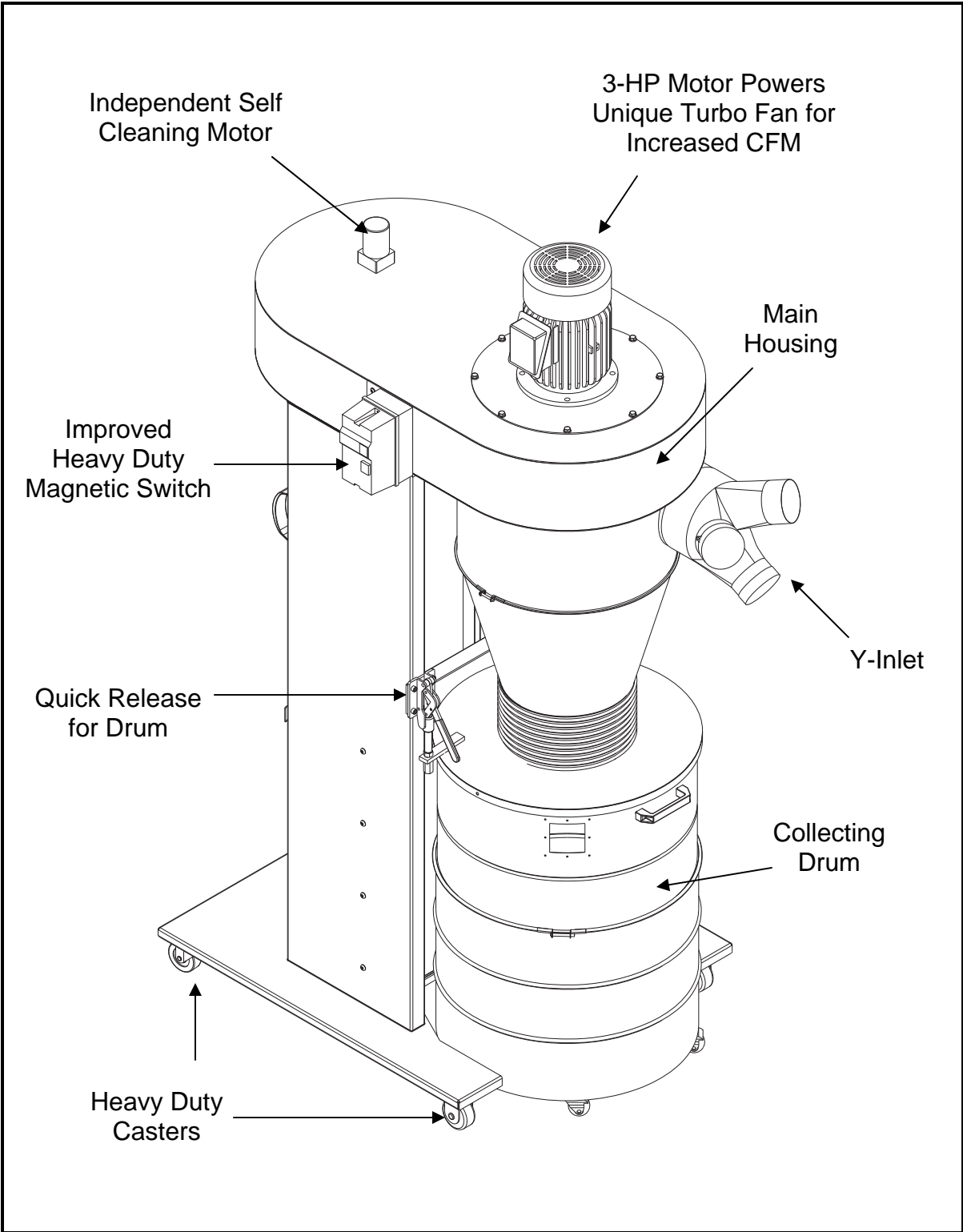
- ❑ Net Weight BOX 1 139 KGS
- ❑ Net Weight BOX 2. 40.5 KGS

- ❑ Gross Weight BOX 1 158 KGS
- ❑ Gross Weight BOX 2. 45.5 KGS
- ❑ CUFT- BOX 1 33.2'
- ❑ CUFT- BOX 2 12.8'

- ❑ Warranty 3 Years

CT140N-3HP Dust Cyclone

Physical Features



Unpacking and Inventory

Your dust cyclone is shipped with all its components and hardware inside the box. Open the box and check the components and their quantities according to the list below. If you can not find any part in this list, check the mounting location on the machine. It might be pre-installed for shipping purposes.

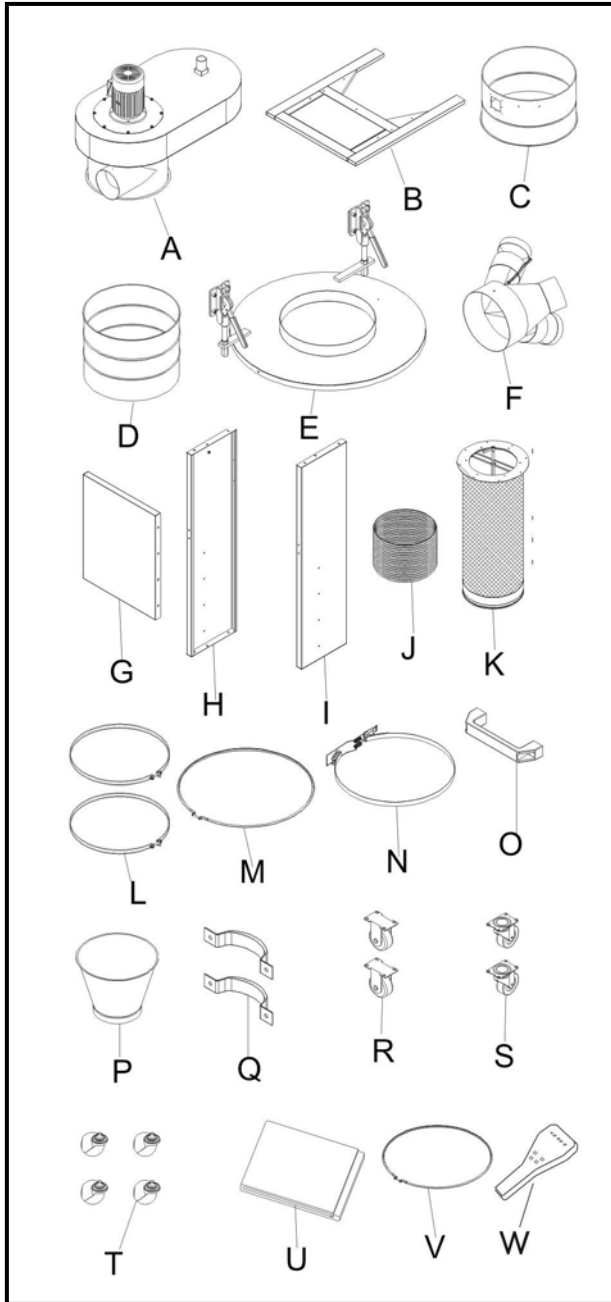


Figure-1 Parts

Contents (figure-1)	Qty
A. Main Housing	1
B. Base.....	1
C. Upper Drum	1
D. Lower Drum	1
E. Drum Lid.....	1
F. Y-Inlet.....	1
G. Fixing Board.....	1
H. Left Stand Board	1
I. Right Stand Board	1
J. Hose	1
K. Canister Filter.....	1
L. Hose Clamp.....	2
M. Cone Clamp.....	2
N. Bag Clamp	
O. Drum Handle.....	4
P. Reducing Housing	2
Q. Handle	1
R. Fixing Wheel	1
S. Moveable Wheel	1
T. Wheel	1
U. Plastic Bag	1
V. Drum Clamp	1
W. Remote Controller (OPTIONAL).....	1

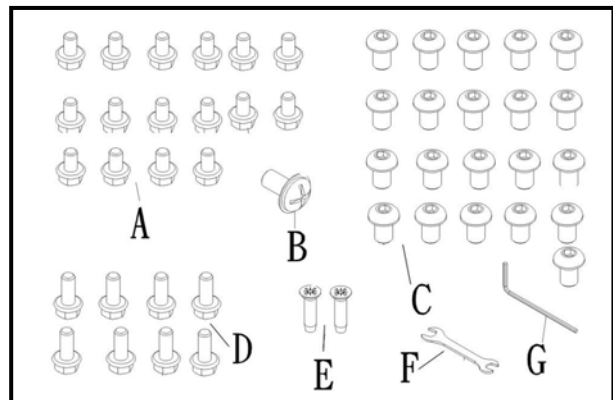


Figure-2 Hardware

Contents (figure-2)	Qty
A. Flange Bolt	21
B. Philip Head Screw	1
C. Button Head Screw	16
D. Flange Bolt	1
E. Flat Head Screw.....	1
F. Open Wrench	1
G. Allen Wrench.....	1

Proper Grounding

Grounding provides a path of least resistance for electric current to reduce the risk of electric shock.

CT140N is equipped with a cord having equipment-ground conductor and grounding plug. Make sure the cord is plugged into a properly installed and grounded power outlet.

To prevent electrical hazards, have a qualified electrician ensure that the line is properly wired.

This appliance is for use on a circuit having a normal of 240 volt and is factory-equipped with a specific electric cord and plug to permit connection to a proper electric circuit. Make sure that the appliance is connected to an outlet having the same configuration as the plug. No adaptor should be used with this appliance.

For permanently connecting, the dust cyclone must be connected to a grounded metal, permanent wiring system, or an equipment-grounding conductor must run with the circuit conductor and connected to the equipment grounding terminal or lead on the machine.

WARNING! Improper connection of the equipment-grounding conductor can result in a risk of electric shock. Check with a qualified electrician if you are in doubt as to whether the outlet is properly grounded.

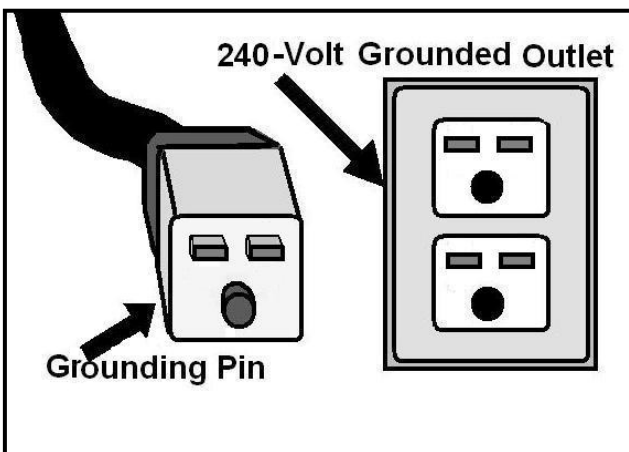


Figure-3 240-Volts Outlet for CT140N

ASSEMBLY

Casters & Stand Supports

Take the base, the rotating base wheels and the fixed base wheels out of the box and attach the wheels to the base with the help of flange bolts provided. See figure-3.

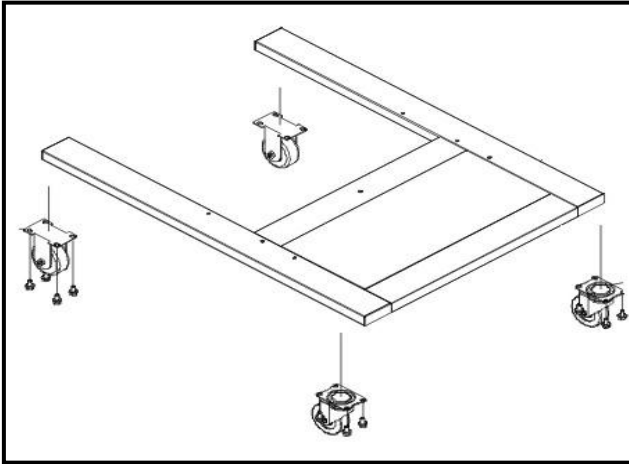


Figure-4 Attaching wheels to the base

Once the wheels are installed, take the right, middle and left stand supports and place them on the base and attach them using flange bolts. See figure-5

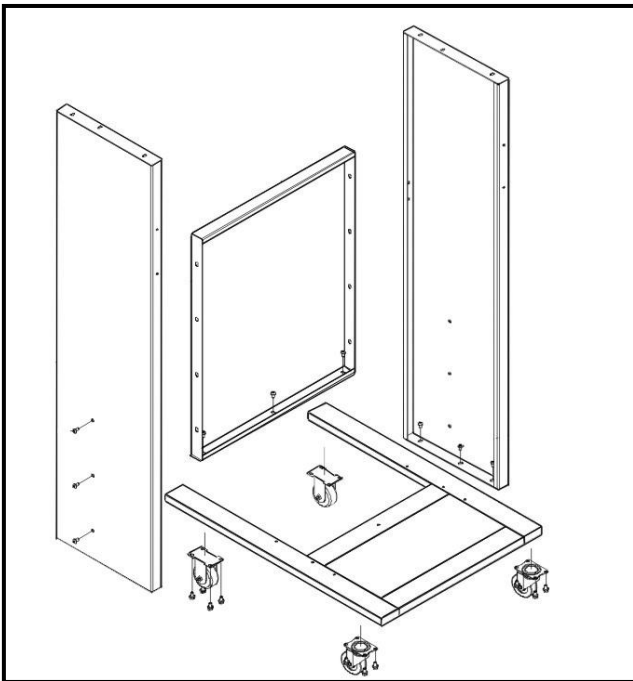


Figure-5 Installing the stand supports

Canister Filter & Main Housing

Now take the canister filter out of the box and attach it to the main housing and secure it with the help of flange bolts provided.

Make sure to place the canister rod (10) into the motor rod (9).

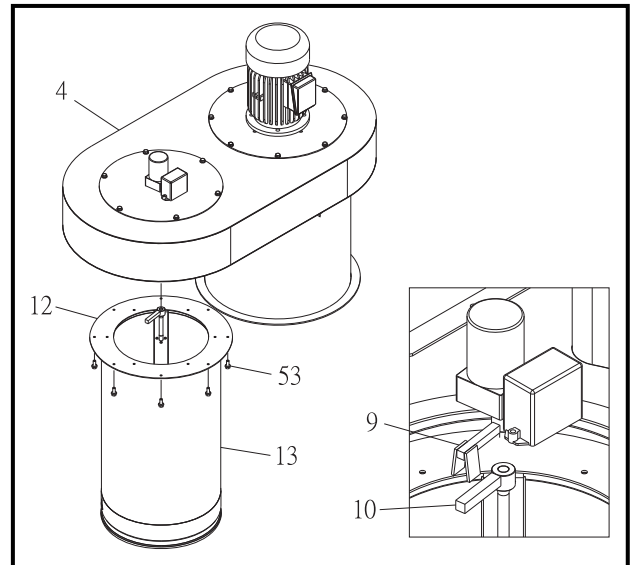


Figure-6 Installing the canister filter

Once the canister filter is attached to the main housing you need to get assistance to help you lifting the main housing and place it on the stand supports. See figure-7

Use the positioning guides (A) on both sides of the housing to align it to the stand supports and use the button head screws to attach it to the stand supports.

IMPORTANT

The housing is heavy. Do not over-exert yourself. For safety purposes, get the help of an assistant when lifting it and placing on the stand supports for assembly.

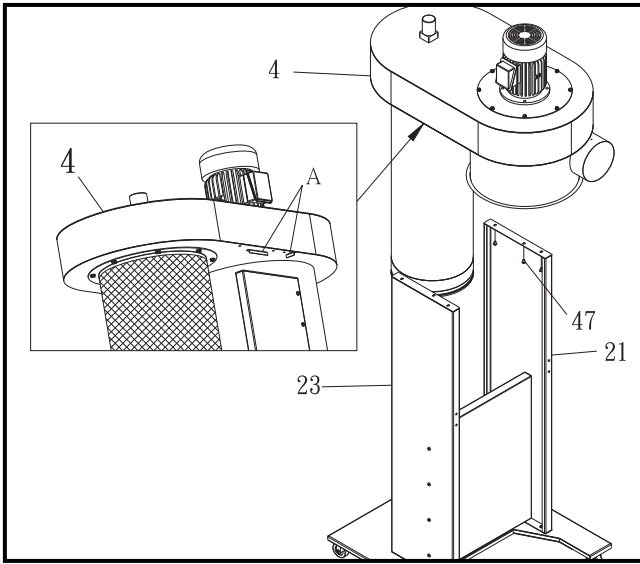


Figure-7 Installing the main housing

Collection Drum & Y-Inlet Adapter

Now, assemble the upper collecting drum and the lower collecting drum and tighten with the drum clamp. Take the 4 wheels for the collection drum and install them by screwing into the threaded inserts underneath the lower drum.

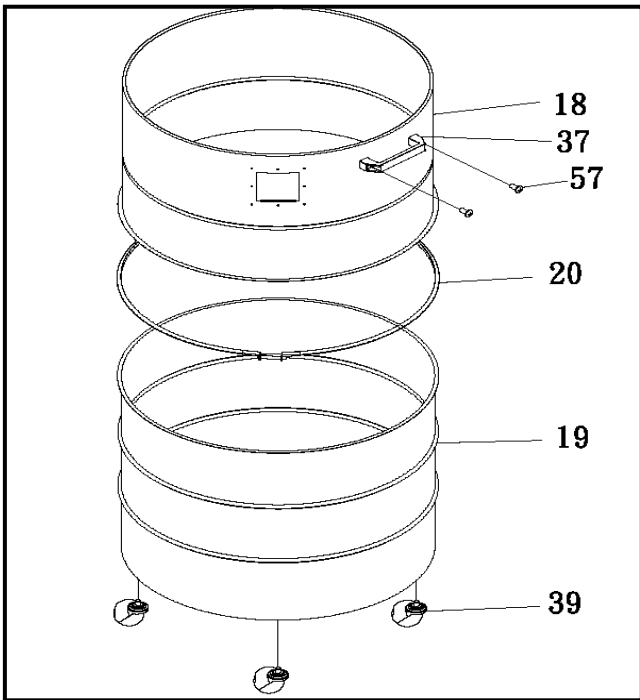


Figure-8 Installing the collection drum wheels

Take the Y-inlet adapter and attach it to the housing with the help of Philip head screws.

Now, bring the drum and put the drum lid on. Attach the hose from the top of the drum to the bottom of the reducing housing, using hose clamps.

Place the drum position and secure each lid lever assembly on the left and right stand supports using 1/4" x 1/4" button head screws.

Magnetic Switch, Plastic Bag & Handles

Unscrew the two flat head screws on the housing. Then place the switch with fixing plate on the housing and tight with the two flat head screws.

Attach the lower plastic bag under the canister filter using the bag clamp.

Attach the handles on both stands using button head screws.

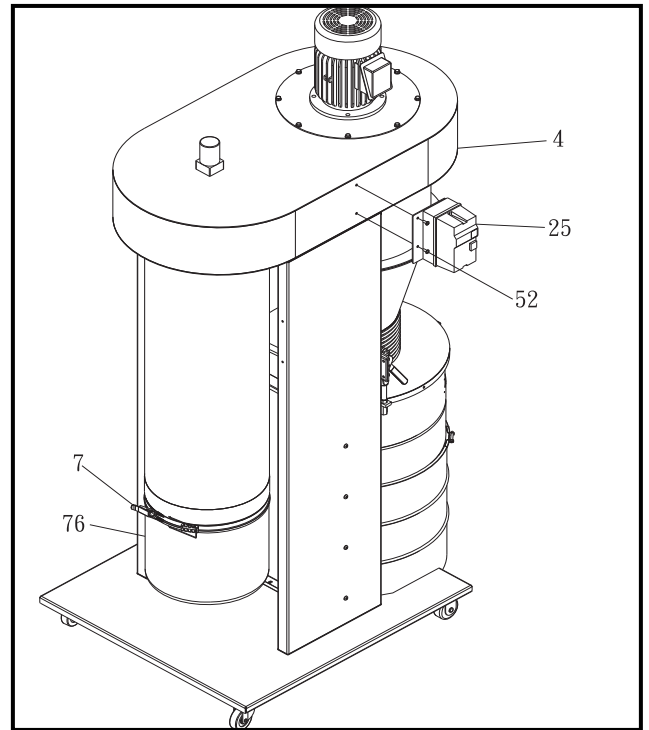


Figure-9 Installing the magnetic switch

REMOTE CONTROLLER (Optional)

CT140N features an optional remote controller which makes it easy for you to control your dust cyclone from a far distance.

The remote controller features ON and OFF button, 2 TIMER buttons (+) and (-).

ON and OFF Buttons

These two buttons are used to turn on and turn off the motor.

Timer Buttons (+) and (-)

The timer buttons are used to increase or decrease the running time for the motor.

Pressing the (+) button increases the while the (-) button decreases the running time.



Figure-10 Optional Remote Controller for CT140N

How to Reset and Clear the Remote Controller Frequency?

Open the magnetic switch first and locate the reset button. See figure 11

Clear: Press the reset button for 3 seconds until the receiver beeps 3 times.

Reset: **Step1:** Press the reset button for 1 second until the receiver “beeps” once.

Step2: Press “ON” button on the hand held remote control until the receiver “beeps” twice.

Step 3: Press the reset button for 3 seconds until the receiver “beeps” 3 times.

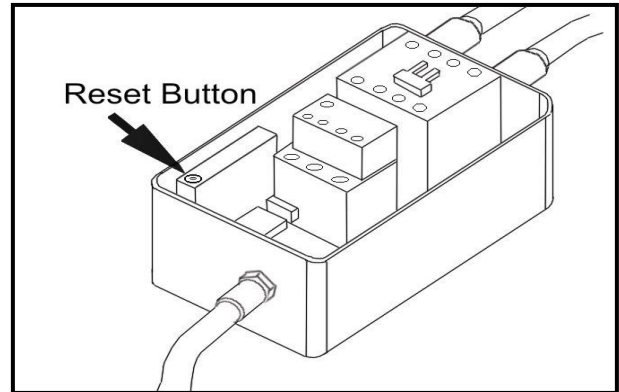


Figure-11 Shows the Reset Button

TEST RUN

Once you have assembled your dust cyclone then it is time to do a test run and see if the machine powers up and runs properly or not.

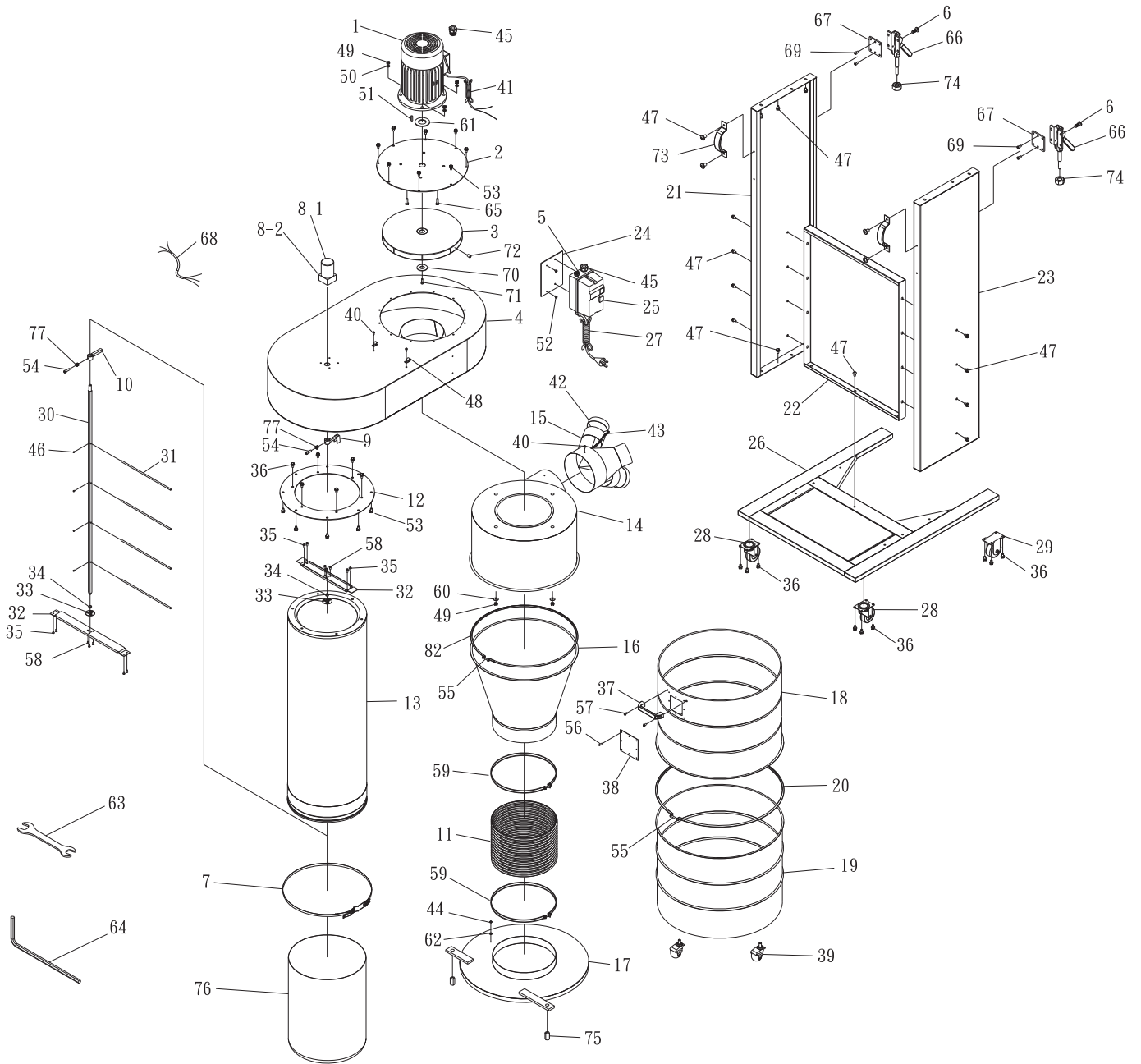
Walk around the machine and take a look at all the parts you have assembled and make sure all the screws are tightened properly. Connect the machine to the correct power source and start the machine. During the test run if there is any unusual noise or vibration, disconnect the machine from the power source immediately and check all the parts you have assembled once again.

WARNING! Do not make any adjustments while the machine is running. Turn off the machine and unplug from the power source before making any adjustments

Make sure you read the manual before the test run and understand all the safety instructions of your machine.

All the tools and objects used for assembling the machine should be removed and cleared away.

CT140N-3HP Dust Cyclone Parts Breakdown



CT140N-3HP Dust Cyclone

Parts List

<u>Part #</u>	<u>Description</u>
1	Motor
2	Motor Plate
3	Impeller
4	Main housing
5	Canister Upper Fixing Plate
6	Cover
7	Reducer Plate
8-1	Motor
8-2	Reducer
9	Rod Kit
10	Rod
11	Hose
12	Canister Fixing Plate
13	Canister Filter
14	Housing
15	Y-Inlet
16	Reducing Hosing
17	Drum Lid
18	Upper Collecting Drum
19	Lower Colleting Drum
20	Drum Clamp
21	Left Stand Board
22	Fixing Board
23	Right Stand Board
24	Switch plate
25	Magnetic Switch
26	Base
27	Power Cord
28	Movable Wheel
29	Fixing Wheel
30	Spindle

31	Cleaning Bar
32	Lower Fixing Plate
33	Ball Bearing Fixing Plate
34	Ball Bearing
35	Phillips Head Screw
36	Flange Bolt
37	Drum Handle
38	PC Board
39	Wheel
40	Phillips Head Screw
41	Motor Cord
42	Cap
43	Chain
44	Grounding Copper Screw
45	Pushing
46	Set Screw
47	Button Head Screw
48	Wire Clip
49	Nut
50	Spring Washer
51	Key
52	Phillips Head Screw
53	Flange Bolts
54	Phillips Head Screw
55	Phillips Head Screw
56	Rivet
57	Flat Head Screw
58	Button Head Screw
59	Hose Clamp
60	Washer
61	Motor Packing
62	Tooth Washer

63	Open Wrench
64	Connecting Wire
65	Hex Head Screw
66	Quick Handle
67	Quick Handle Fixing Board
68	Connecting Wire
69	Button Head Screw
70	Impeller Washer
71	Cap Screw
72	Set Screw
73	Handle
74	Nut
75	Long Nut
76	Plastic bag
77	Nut
78	Power Cord
79	Pushing
80	Phillips Head Screw
81	Cap Screw
82	Cone clamp
83	Allen Wrench



WARRANTY

CRAFTEX 3 YEAR LIMITED WARRANTY

Craftex warrants every product to be free from defects in materials and agrees to correct such defects where applicable. This warranty covers **three years** for parts and 90 days for labour (unless specified otherwise), to the original purchaser from the date of purchase but does not apply to malfunctions arising directly or indirectly from misuse, abuse, improper installation or assembly, negligence, accidents, repairs or alterations or lack of maintenance.

Proof of purchase is necessary.

All warranty claims are subject to inspection of such products or part thereof and Craftex reserves the right to inspect any returned item before a refund or replacement may be issued.

This warranty shall not apply to consumable products such as blades, bits, belts, cutters, chisels, punches etceteras.

Craftex shall in no event be liable for injuries, accidental or otherwise, death to persons or damage to property or for incidental contingent, special or consequential damages arising from the use of our products.

RETURNS, REPAIRS AND REPLACEMENTS

To return, repair, or replace a Craftex product, you must visit the appropriate Busy Bee Tools showroom. Craftex is a brand of equipment that is exclusive to Busy Bee Tools.

For replacement parts directly from Busy Bee Tools, for this machine, please call 1-800-461-BUSY (2879), and have your credit card and part number handy.

- All returned merchandise will be subject to a minimum charge of 15% for re-stocking and handling with the following qualifications.
- Returns must be pre-authorized by us in writing.
- **We do not accept collect shipments.**
- Items returned for warranty purposes must be insured and shipped pre-paid to the nearest warehouse (see locations on inside back cover of this manual).
- Returns must be accompanied with a copy of your original invoice as proof of purchase. Returns must be in an un-used condition and shipped in their original packaging a letter explaining your reason for the return. Incurred shipping and handling charges are not refundable.
- Busy Bee will repair or replace the item at our discretion and subject to our inspection.
- Repaired or replaced items will be returned to you pre-paid by our choice of carriers.
- Busy Bee reserves the right to refuse reimbursement or repairs or replacement if a third party without our prior authorization has carried out repairs to the item.
- Repairs made by Busy Bee are warranted for 30 days on parts and labour.
- Any unforeseen repair charges will be reported to you for acceptance prior to making the repairs.
- The Busy Bee Parts & Service Departments are fully equipped to do repairs on all products purchased from us with the exception of some products that require the return to their authorized repair depots. A Busy Bee representative will provide you with the necessary information to have this done.
- For faster service it is advisable to contact the nearest Busy Bee location for parts availability prior to bringing your product in for repairs.