



## CT145 – THE ULTIMATE DUST COLLECTOR

# INDEX

GENERAL SAFETY INSTRUCTIONS.....PAGE 3  
SPECIFIC SAFETY INSTRUCTIONS.....PAGE 4

Grounding Instructions.....PAGE 5  
Introduction & Specifications.....PAGE 6  
Features.....PAGE 7

Unpacking & Checking of Contents.....PAGE 8  
Unpacking & Checking of Hardware.....PAGE 9

Assembly  
Assembling Main Body to Stand.....PAGE 10  
Assembling Stand to Base.....PAGE 10  
Assembling Y-Inlet, Hose & Cover.....PAGE 11  
Assembling Hanger & Top/Bottom Bags.....PAGE 11

Operation  
Using as a Dust Collector.....PAGE 12  
Using as a Vacuum.....PAGE 12 – 14

Useful Notes & Formulas.....PAGE 15

Optional Accessories.....PAGE 16




Schematic Diagram.....PAGE 17  
Parts List.....PAGE 18

Warranty Information.....PAGE 19

# GENERAL SAFETY INSTRUCTIONS

**EXTREME CAUTION SHOULD BE USED IN OPERATING ALL POWER TOOLS. KNOW YOUR POWER TOOL, BE FAMILIAR WITH ITS OPERATION. READ THE OWNER'S MANUAL AND PRACTICE SAFE USAGE PROCEDURES AT ALL TIMES.**

- ❑ **CONNECT** your machine **ONLY** to the matched and specified power source.
- ❑ **WEAR SAFETY GLASSES, RESPIRATORS, HEARING PROTECTION** and **SAFETY SHOES** when operating heavy machinery. **Always wear safety glasses.**
- ❑ **DO NOT** wear loose clothing or jewellery when operating machinery.
- ❑ **A Safe Environment is important.** Keep the area free of dust, dirt and other debris in the immediate vicinity of the machine.
- ❑ **BE ALERT!** Do Not Use prescription or other drugs that may affect your ability or judgement to safely use this machine.
- ❑ **DISCONNECT** the power source when making changes, adjustments or repairs.
- ❑ **NEVER** leave an operating tool unattended.
- ❑ **ALWAYS** keep all safety guards in place and ensure their proper function.
- ❑ **ALWAYS** make sure that any tools used for adjustments are removed before operating the machine.
- ❑ **ALWAYS** secure your work with the appropriate clamps or vises.
- ❑ **ALWAYS** keep bystanders safely away while operating machinery.
- ❑ **THINK SAFETY. WORK SAFELY.** Never attempt a procedure if it does not feel safe or comfortable.

CAUTION & WARNING	
	Read and understand operator's manual before using this machine. Failure to follow operating instructions could result in death or serious injury.
	Flying objects and loud noise hazards. Wear approved ear and eye protection.
	Respiratory hazard. Wear approved respirator in this area.

## CT145 SPECIFIC SAFETY INSTRUCTIONS

- ❑ The CT145 is designed to collect sawdust ONLY.
- ❑ **NEVER** attempt to use this Dust Collector to vacuum water or any other liquids.
- ❑ **NEVER** try to use this Dust Collector to collect large wood scraps.
- ❑ **NEVER** attempt to use this Dust Collector to collect metal materials such as screws, nails or other metal parts.
- ❑ When using this machine in Vacuum mode, be sure **NOT TO** collect nails, screws or other metal parts.
- ❑ **NEVER** remove the filter bag or the collection bag with the motor operating.
- ❑ **DO NOT** leave the dust collector plugged into the electrical outlet. Unplug dust collector from outlet when not in use and before servicing, changing bags, unclogging and cleaning.
- ❑ **WARNING: TO REDUCE THE RISK OF ELECTRICAL SHOCK** do not use outdoors or on wet surfaces. Use for dry pickup only!
- ❑ **DO NOT** use the dust collector to pick up flammable or combustible liquids, such as gasoline. **NEVER** use the dust collector near any flammable or combustible liquids.
- ❑ **NEVER** use the dust collector to dissipate fumes or smoke. **NEVER** pick-up anything that is burning or smoking, such as cigarettes, matches or hot ashes.
- ❑ **USE** only as described in this manual
- ❑ **REPLACE** a damaged cord immediately. **DO NOT** use a damaged cord or plug. If the dust collector is not operating properly, or has been damaged, left outdoors or has been in contact with water, do not attempt to use it and contact your nearest service department.
- ❑ **DO NOT** use the dust collector as a toy. **DO NOT** use near or around children.
- ❑ **DO NOT** insert fingers or foreign objects into the dust intake ports. Keep hair, loose clothing, fingers, and all body parts away from openings and moving parts of the dust collector.
- ❑ **PERIODICALLY INSPECT** dust and filter bags for any cuts, rips or tears. **NEVER** operate the dust collector with a damaged bag or vacuum hose.
- ❑ **NEVER** operate the Dust Collector with all blast gates closed.
- ❑ **ALWAYS** disconnect the CT145 from its power source when changing or emptying the bags.
- ❑ **ALWAYS** be sure that the collection and filter bags are securely fastened to the Collector Body with the appropriate clamps.
- ❑ **WARNING** - Do not operate this unit until hose or pipe is installed onto the dust inlet port.

# GROUNDING INSTRUCTIONS

The tool must be grounded, if it should malfunction or breakdown, grounding provides a path of least resistance for electric current to reduce the risk of electric shock. This appliance is equipped with a cord having equipment-ground conductor and grounding plug. The plug must be inserted into an appropriate outlet that is properly installed and grounded in accordance with all local codes and ordinances.

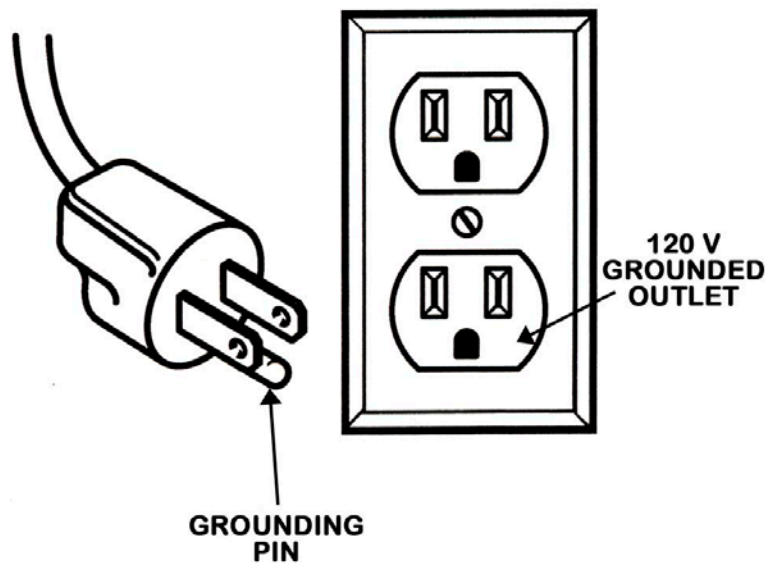
**WARNING** – Improper connection of the equipment-grounding conductor can result in a risk of electric shock. Check with a qualified electrician or service person if you are in doubt as to whether the outlet is properly grounded. Do not modify the plug provided with the appliance – if it will not fit the outlet; have a proper outlet installed by a qualified electrician.

## For grounded, cord-connected appliances:

This appliance is for use on a circuit having a normal rating more than 120 volt and is factory-equipped with a specific electric cord and plug to permit connection to a proper electric circuit. Make sure that the appliance is connected to an outlet having the same configuration as the plug. No adaptor should be used with this appliance. If the appliance must be reconnected for use on a different type of electric circuit, qualified service personnel should make the reconnection.

## For a permanently connected appliance:

This appliance must be connected to a grounded metal, permanent wiring system; or an equipment-grounding conductor must be run with the circuit conductors and connected to the equipment grounding terminal or lead on the appliance.



# CT145 – THE ULTIMATE DUST COLLECTOR

As part of the growing line of **Craftex** Woodworking Equipment, we are proud to offer the CT145 – The Ultimate Dust Collector. The **Craftex** name guarantees Craft Excellence. By following the instructions and procedures laid out in this owner's manual, you will receive years of excellent service and satisfaction. The CT145 is a professional tool and like all power tools, proper care and safety procedures should be adhered to.

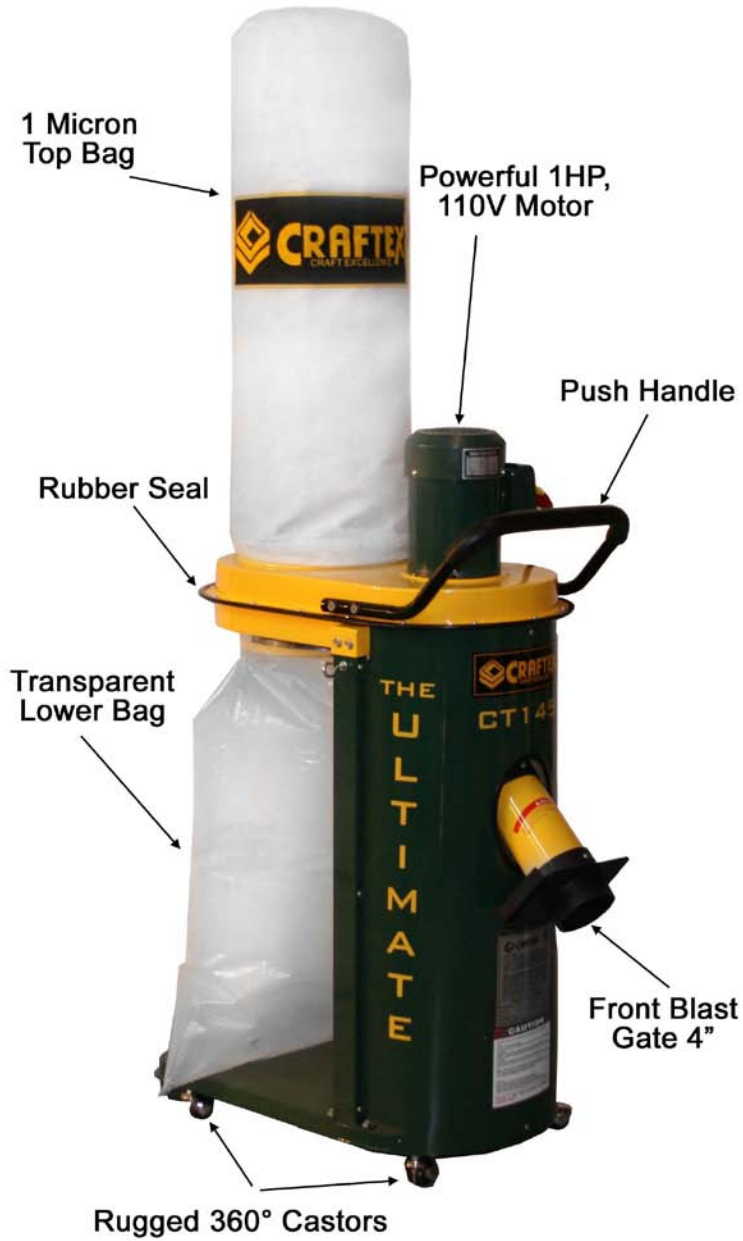
This powerful low-noise factor dust collector is portable or may be set up in semi-permanent locations.

This machine has two main functions. The first is that of a regular dust collector where the machine is hooked up with hose to a power tool or stationary tool. The second function is that the machine can be used as a vacuum to clean your entire shop floor without the aid of a floor sweep or other attachments.

## SPECIFICATIONS

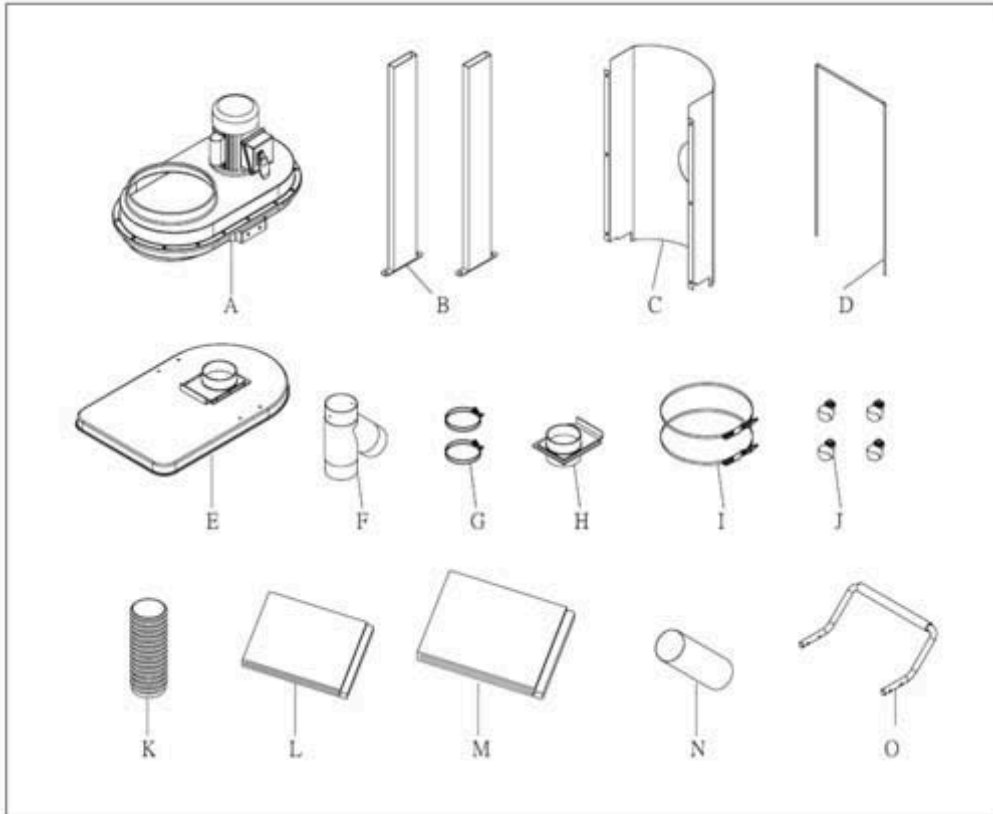
- Motor – 1 HP, 110 volt, 7 amps.
- Motor Speed – 3450 RPM
- Safety Power Switch
- Balanced steel impeller – 10"
- Static Pressure – 6.1 Inch H<sub>2</sub>O
- Air suction capacity – 653 CFM
- Intakes – 2 @ 4". (Front of Machine and on the Base of Machine)
- **One-Micron** upper filtration bag.
- Transparent Polyethylene lower collector bag for content visibility.
- Rugged & versatile castors on base for extra turning capabilities.
- Patented base for dual function capability
- Overall Dimensions– 31.5" x 19 ¾" x 64.5"
- N.Weight – 38 Kg - G.Weight – 39 Kg
- **5 Year Warranty**

# CT145 FEATURES



## UNPACKING & CHECKING CONTENTS

When you begin unpacking the contents of your machine, locate the following parts. Lay them out on a flat and stable working surface to begin assembly.

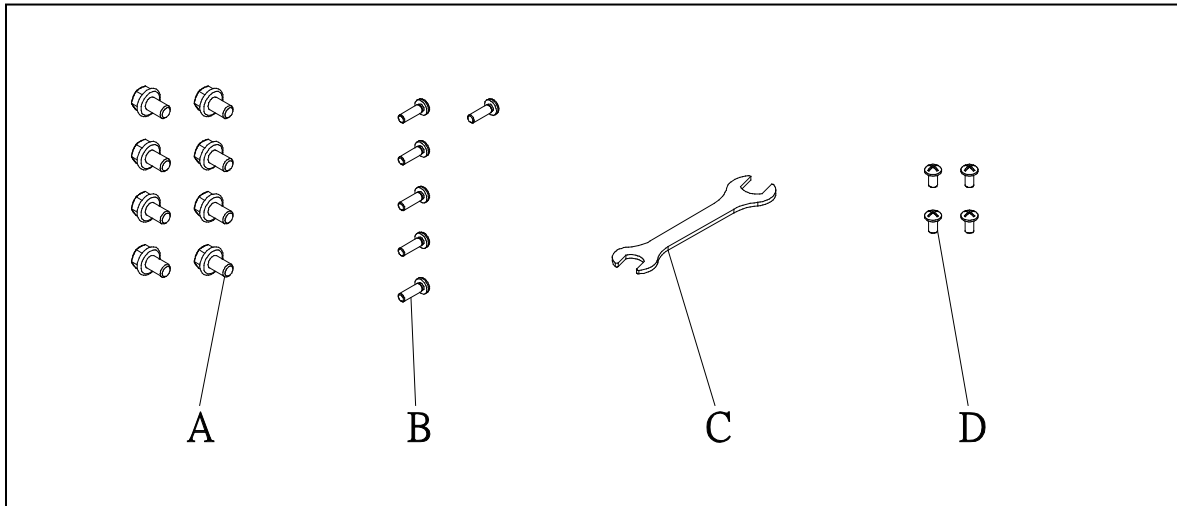


NO.	Description	Specification	Q'TY	Part List No.
A	Housing		1	NO.3
B	Stand		2	NO.14
C	Cover		1	NO.17
D	Hanger		1	NO.30
E	Base		1	NO.19
F	Y-Inlet	4"	1	NO.31
G	Hose Clamp		2	NO.33
H	Blast Gate		1	NO.36
I	Bag Clamp	80H	2	NO.2
J	Wheel	3/8"*1-1/2"	4	NO.22
K	Hose	4"	1	NO.35
L	Upper Bag		1	NO.1
M	Polyester Bag		1	NO.16
N	Tube	4"	1	NO.34
O	Handle		1	NO.8



## UNPACKING & CHECKING – HARDWARE PACKAGE

Locate the following parts. Lay them out on a flat and stable working surface.



NO.	Description	Specification	Q'TY	Part List No.
A	Flange Bolt	5/16"*1/2"	8	NO.13
B	Phillip Head Screw	3/16"*3/8"	6	NO.32
C	Open Wrench	10*12	1	NO.31
D	Phillip Head Screw	3/16"*3/8"	4	NO.15

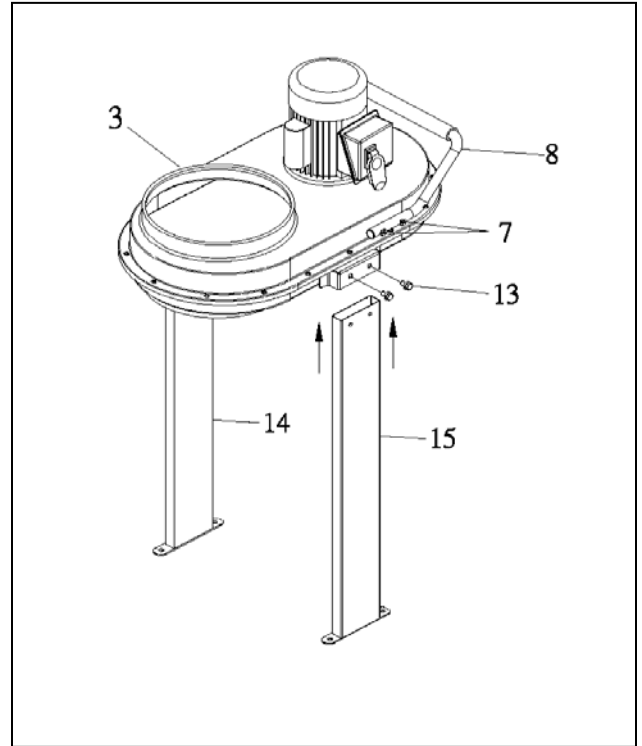
# ASSEMBLY

## STEP 1

To begin, you will want to assemble the stand to the main collector body.

Locate the left (**No.14**) and right (**No.15**) stand and assemble them both to the main collector body (**No.3**) with the use of the provided flange bolts (**No.13**) as show in the diagram to the right. Ensure that the sides of parts (**No.14**) & (**No.15**) with the holes (**No.3**) is facing towards the motor  
See *Figure 1*

Locate the handle (**No.8**) to the front of the main collector body with the use of the provided Philips head screws (**No.7**)  
The front of the machine is in front of the motor.  
See *Figure 1*

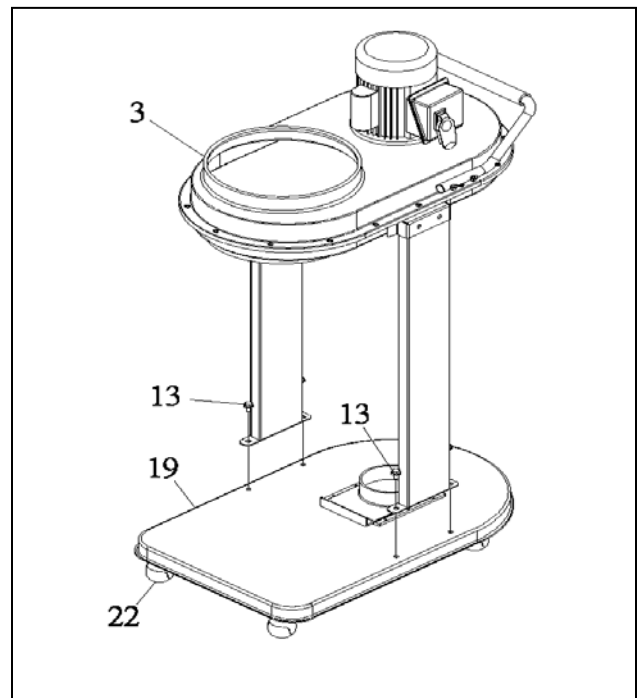


*Figure 1*

## STEP 2

Before you attach the base of the machine to the right and left stand, you will want to attach the 4 castors (**No.22**) to the base (**No.19**). Use the provided wrench to tighten the 4 swivel castors to the base.

Now you can assemble the base (**No.19**) to the stand with the provided flange bolts. (**No.13**)  
See *Figure 2*



*Figure 2*

# ASSEMBLY

## STEP 3

Now that the base and stand are attached, you will want to begin to assemble the rest of the machine.

Locate the Y-Inlet (**No.31**) and connect it to the inlet under the bottom of the main collector body (**No.3**)

Connect the Y-Inlet (**No.31**) to the blast gate on the base with the Hose (**No.35**) and tighten with the provided Hose Clamp (**No.22**) on the top and bottom of the Hose.

Locate the Tube (**No.34**) and connect it to the Y-Inlet and tighten with the provided Phillips head screws. (**No.7**)

Before installing the rounded cover, remove the flange bolt from part (**No.14**) & (**No.15**) as they will be in the way. Reinstall these after affixing the cover.

Locate the blast gate (**No. 36**) and affix it to the end of the Tube (**No. 32**) with the provide Phillips head screws

Locate the front rounded Cover (**No.17**) and affix it to the right and left stands with the provided Phillips head screws. (**No.7**)

See Figure 3

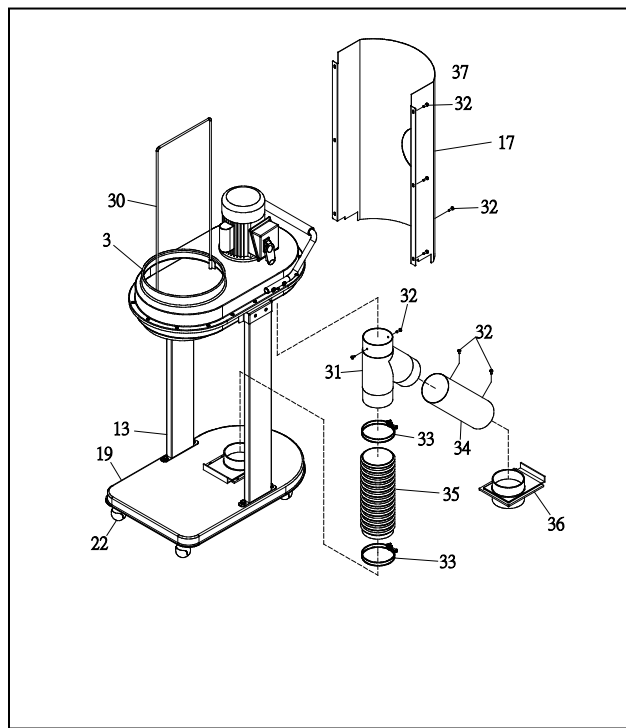


Figure 3

## STEP 4

Locate the hanger rod (**No.30**) and place it in the housing slots of the body. Then place the Upper Felt Bag (**No.1**) on top of the hanger and use the Bag Clamp (**No.2**) to tighten the bag to the main body.

Locate the Lower Transparent Bag (**No.16**) and the second Bag Clamp (**No.2**) and tighten the lower bag to the bottom of the main body as show in Figure 4

Congratulations, all assembly steps are now complete. Please take a moment to inspect the entire machine to ensure all screws and clamps are tightened and that nothing is loose.

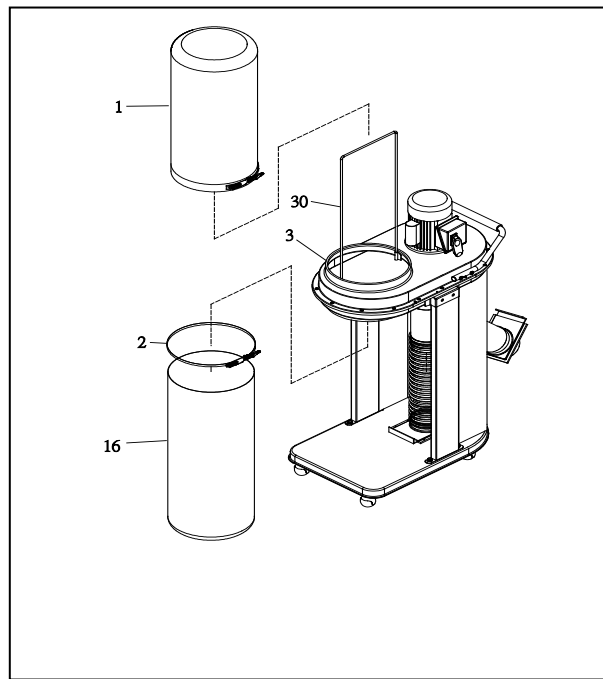


Figure 4

## OPERATION

The Ultimate Dust Collector is a dual purpose dust collector. The machine can be used as a normal dust collector and as a vacuum. The revolutionary design allows the user to clean his/her floor without the need or use of floor sweeps or other attachments.

### USE AS A DUST COLLECTOR

To use The Ultimate as a regular dust collector (hooked up to a machine) simply close the bottom blast gate located on the base of the machine and open the blast gate at the front of the machine as shown in the pictures below. Attach Hose to the front blast gate and to the other machine you will be using.



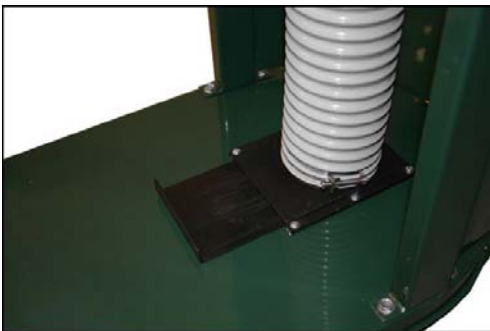
Close the bottom blast gate.



Open the top blast gate to allow air flow from desired tool.

### USE AS A VACUUM

To use this machine as a vacuum, simply open the bottom blast gate located on the base of the machine and close the blast gate at the front of the machine.



Open Bottom blast gate to allow vacuum action.



Close Top blast gate

## OPERATION

The design of the machine is simple yet extremely effective. When in Vacuum mode, **DO NOT** use this machine to pick up anything other than **WOOD DUST** or small **WOOD CHIPS**. This machine is **NOT** designed to pick up metals, liquids or other materials. When cleaning your shop floor, we recommend that you watch out for other debris on your floor the same way you would do so when using a floor sweep. Watch out for items on your floor such as nuts, bolts, screws, nails and other such things which can harm the intake of your machine or puncture your bags.

In Vacuum mode, we recommend that you drive towards and over the wood dust at a normal pace. For the most effective cleaning, do not rush or push the machine in a fast pace. A simple and normal walking pace is ideal for collecting all the dust from the floor in one pass.

Show below is The Ultimate Dust Collector in vacuum mode on an open floor.



## OPERATION

Show below is The Ultimate Dust Collector used in vacuum mode against the corner of a shop floor. The castors on the CT145 allows the machine to swivel in almost any direction making it very versatile and allowing it to get into almost any corner.



## USEFUL NOTES

Wood dust can be very dangerous if one is exposed to it very often. As dust collection has gained popularity over the years, so has consumer knowledge about this concern, but it is always good to know just how dangerous wood dust can be if overexposure and or unsafe woodworking practice takes place.

Health Risk and Hazards that can be caused by exposure to wood dust include the following:

- Asthma
- Eye Irritation
- Hypersensitivity
- Skin Irritation
- Dermatitis
- Suberosis
- Acute Airway Obstructions
- Chronic Bronchitis
- Granulomatous Pneumonitis
- Nasal Cancer

## Formulas

**Velocity (FPM)** = Volume (CFM) / Cross Sectional Area (ft.<sup>2</sup>)

**Volume (CFM)** = Velocity (FPM) x Cross Sectional Area (ft.<sup>2</sup>)

**Cross Sectional Area (ft.<sup>2</sup>)** = Volume (CFM) / Velocity (FPM)

**Circle Area** = 3.142 x Radius<sup>2</sup>

**Diameter** = 2 x Radius

## OPTIONAL ACCESSORIES

### PVC FLEX HOSE

PH003 - 3" PVC Pipe ~ per foot, **or** 50 ft. Roll

PH004 - 4" PVC Pipe ~ per foot, **or** 50 ft. Roll

PH005 - 5" PVC Pipe ~ per foot, **or** 50 ft. Roll



### Dust Accessories Kit For 4" Fittings

Model – W1055

Kit #2 to service two machines

Two blast gates, two 10' hoses, one table saw hood, one universal hood, one "Y" fitting, ten hose clamps

17 pieces



### Dust Accessories Kit For 4" Fittings

Model – W1054

Kit #1 to service one machine

10' hose, one universal hood, two hose clamp

4 pieces



### Replacement Bags for CT145

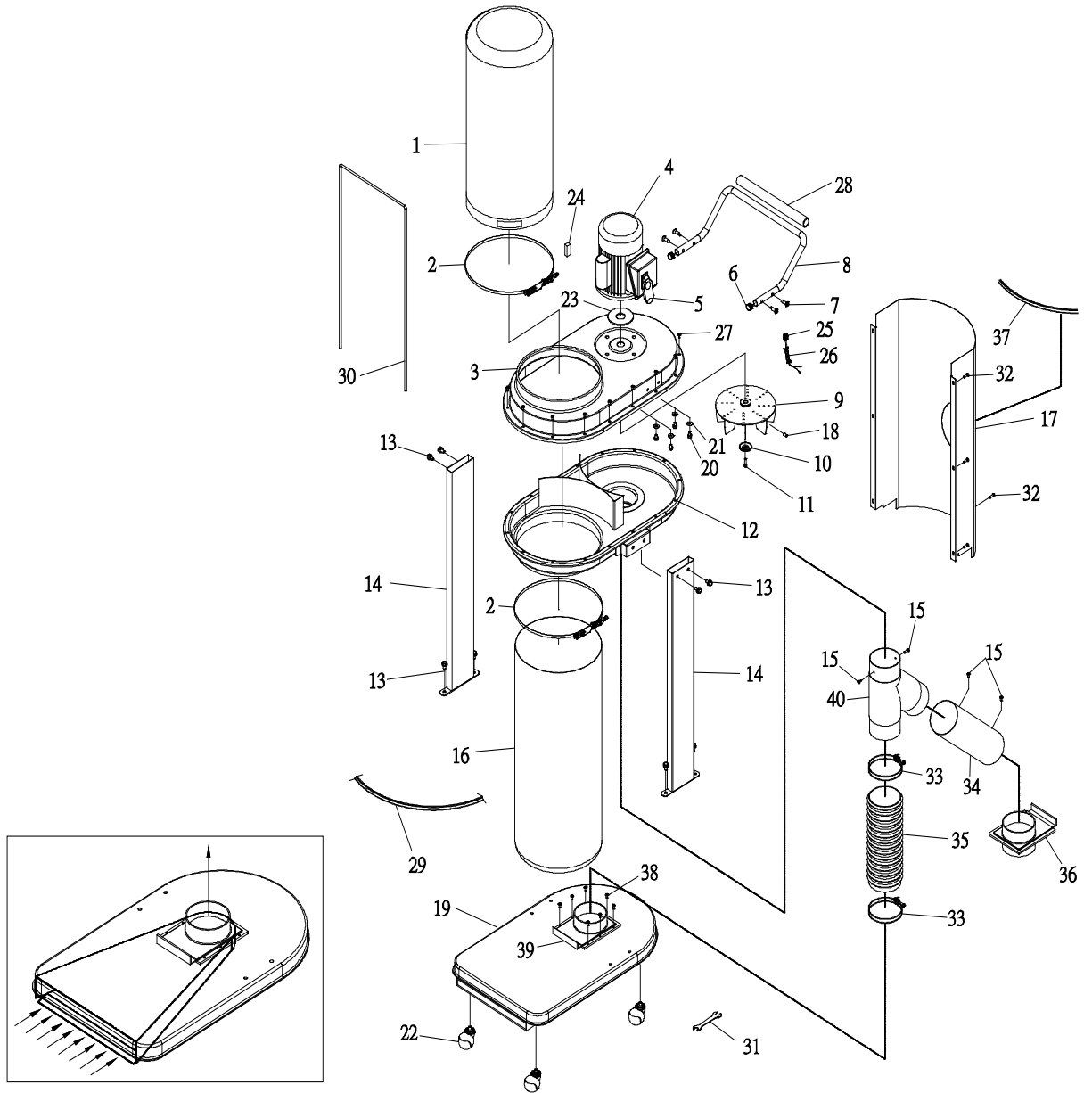
Model – CT145B - Bottom Dust Bag - Transparent

Model – CT145BT - Top Dust Bag - 1 micron

Steel Straps Clamps – Model CT036 - 2pc clamp set



# SCHEMATIC DIAGRAM



## PARTS LIST

NO.	DESCRIPTION	SPECIFICATION	Q'TY
1	Upper Bag	Φ280x800	1
2	Bag Clamp	80H	2
3	Upper Housing		1
4	Motor	1HP	1
5	Switch		1
6	Cap	3/4"	2
7	Phillip Head Screw	5/16"x 1-1/4"	4
8	Handle		1
9	Impeller	10"	1
10	Impeller Washer		1
11	Cap Screw	M6x20	1
12	Lower Housing		1
13	Flange Bolt	5/16"x 1/2"	8
14	Stand		2
15	Phillip Head Screw	3/16"x 3/8"	4
16	Lower Polyester Bag	Φ280x750	1
17	Cover		1
18	Set Screw	5/16"x 5/16"	1
19	Base		1
20	Hex Head Bolt	1/4"x 3/8"	4
21	Washer	1/4"	4
22	Wheel	3/8"x 1-1/2"	4
23	Motor Packing		1
24	Key	5x5x25	1
25	Hayco Type Strain Relief		1
26	Power Cord		1
27	Tapping Screw	M5*10	16
28	Foam	7/8"x 430 x 5	1
29	Rubber Cover for Upper & Lower Housing	1750x11 mm	1
30	Hanger for Upper Bag		1
31	Open Wrench	10*12	1
32	Phillip Head Screw	3/16"x 3/8"	6
33	Cap	4"	1
34	Tube		1
35	Hose	4"	1
36	Blast Gate	4"	1
37	Rubber Cover for Port Hole	450x11 mm	1
38	Phillip Head Screw	3/16"x 1/2"	7
39	Blast Gate	4"	1
40	Inlet	4"	1



## CRAFTEX 5-YEAR WARRANTY

Craftex warrants every product to be free from defects in materials and agrees to correct such defects where applicable. This warranty covers **five years** for parts and 90 days for labour (unless specified otherwise), to the original purchaser from the date of purchase but does not apply to malfunctions arising directly or indirectly from misuse, abuse, improper installation or assembly, negligence, accidents, repairs or alterations or lack of maintenance.

*Proof of purchase is necessary.*

All warranty claims are subject to inspection of such products or part thereof and Craftex reserves the right to inspect any returned item before a refund or replacement may be issued.

This warranty shall not apply to consumable products such as blades, bits, belts, cutters, chisels, punches etceteras. Craftex shall in no event be liable for injuries, accidental or otherwise, death to persons or damage to property or for incidental contingent, special or consequential damages arising from the use of our products.

## RETURNS, REPAIRS AND REPLACEMENTS

To return, repair, or replace a Craftex product, you must visit the appropriate Busy Bee Tools showroom or call 1-800-461-BUSY. Craftex is a brand of equipment that is exclusive to Busy Bee Tools.

For replacement parts directly from Busy Bee Tools, for this machine, please call 1-800-461-BUSY (2879), and have your credit card and part number handy.

- All returned merchandise will be subject to a minimum charge of 15% for re-stocking and handling with the following qualifications.
- Returns must be pre-authorized by us in writing.
- We do not accept *collect* shipments.
- Items returned for warranty purposes must be insured and shipped pre-paid to the nearest warehouse
- Returns must be accompanied with a copy of your original invoice as proof of purchase. Returns must be in an unused condition and shipped in their original packaging a letter explaining your reason for the return. Incurred shipping and handling charges are not refundable.
- Busy Bee will repair or replace the item at our discretion and subject to our inspection.
- Repaired or replaced items will be returned to you pre-paid by our choice of carriers.
- Busy Bee reserves the right to refuse reimbursement or repairs or replacement if a third party without our prior authorization has carried out repairs to the item.
- Repairs made by Busy Bee are warranted for 30 days on parts and labour.
- Any unforeseen repair charges will be reported to you for acceptance prior to making the repairs.
- The Busy Bee Parts & Service Departments are fully equipped to do repairs on all products purchased from us with the exception of some products that require the return to their authorized repair depots. A Busy Bee representative will provide you with the necessary information to have this done.
- For faster service it is advisable to contact the nearest Busy Bee location for parts availability prior to bringing your product in for repairs.

