



CT188

6" BUFFER

User Manual



TABLE OF CONTENTS

General Safety Instructions.....	3
Specific Safety Instructions.....	4
CT188 Features.....	5
Physical Features.....	6
Unpacking.....	7
Proper Grounding.....	7
Mounting on A Workbench.....	8
Installing Buffing Wheels.....	9
Test Run.....	9
Operation.....	10
Buffing Tips.....	10
Maintenance.....	11
Cleaning.....	11
Parts Diagram.....	12
Parts List.....	13
Warranty.....	14

GENERAL SAFETY INSTRUCTIONS FOR MACHINES

Extreme caution should be used when operating all power tools. Know your power tool, be familiar with its operation, read through the user manual and practice safe usage procedures at all times.

- ❖ **ALWAYS** read and understand the user manual before operating the machine.
- ❖ **CONNECT** your machine **ONLY** to the matched and specific power source.
- ❖ **ALWAYS** wear safety glasses respirators, hearing protection and safety shoes, when operating your machine.
- ❖ **DO NOT** wear loose clothing or jewelry when operating your machine.
- ❖ **A SAFE ENVIRONMENT** is important. Keep the area free of dust, dirt and other debris in the immediate vicinity of your machine.
- ❖ **BE ALERT! DO NOT** use prescription or other drugs that may affect your ability or judgment to safely use your machine.
- ❖ **DISCONNECT** the power source when changing drill bits, hollow chisels, router bits, shaper heads, blades, knives or making other adjustments or repairs.
- ❖ **NEVER** leave a tool unattended while it is in operation.
- ❖ **NEVER** reach over the table when the tool is in operation.
- ❖ **ALWAYS** keep blades, knives and bits sharpened and properly aligned.
- ❖ **ALL OPERATIONS MUST BE** performed with the guards in place to ensure safety.
- ❖ **ALWAYS** use push sticks and feather boards to safely feed your work through the machine and clamp the work-piece (when necessary) to prevent the work-piece from any unexpected movement.
- ❖ **ALWAYS** make sure that any tools used for adjustments are removed before operating the machine.
- ❖ **ALWAYS** keep the bystanders safely away while the machine is in operation.
- ❖ **NEVER** attempt to remove jammed cutoff pieces until the saw blade has come to a full stop.

CT188 – BUFFER

SPECIFIC SAFETY INSTRUCTIONS

- ❖ Read and follow all the instructions and safety precautions in the user manual before setup or use.
- ❖ For the protection of your eyes, always wear safety glasses, goggles or face shield while operating the buffer.
- ❖ Make sure to secure the buffer properly to a workbench. An unsecured buffer may become out of control while operation.
- ❖ If you can not hold small work-pieces securely while buffing, use clamps or other tools to hold them.
- ❖ Do not stand directly in front of the buffer while turning it ON or while buffing. Do not buff the work-piece at the rear of the buffer.
- ❖ Do not wear loose clothing, neckties, jewelry or gloves that can get caught in moving parts. Confine long hair and keep sleeves above the elbow.
- ❖ Make sure before making any adjustments, the switch is in the “OFF” position and the cord is un-plugged from the power source.
- ❖ Always inspect the work-piece before buffing. Do not buff pieces with loose knots, large splinters, sharp edges, knives or other potentially dangerous objects that may be grabbed by the buffing wheel and thrown at the operator.
- ❖ Always allow the buffer to reach full speed before feeding the work-piece. Slowly feed the work-piece into the buffing wheel, holding it in front of and slightly below the wheel center. Do not position the work-piece on the top or sides of the buffing wheel and do not place an edge or corner of the work-piece against the buffing wheel.
- ❖ Do not touch the buffing wheel while operation. Abrasive accessories can remove skin very fast. Hold the work-piece securely and position your fingers at a safe distance from the buffing wheel. Do not wear gloves, it may get caught in the wheel.
- ❖ Make sure you have read and understood all the safety instructions in the manual and you are familiar with your buffer, before operating it. If you fail to do so, serious injury could occur.

WARNING!

The safety instructions given above can not be complete because the environment in every shop is different. Always consider safety first as it applies to your individual working conditions.



CT188 – 6" BUFFER

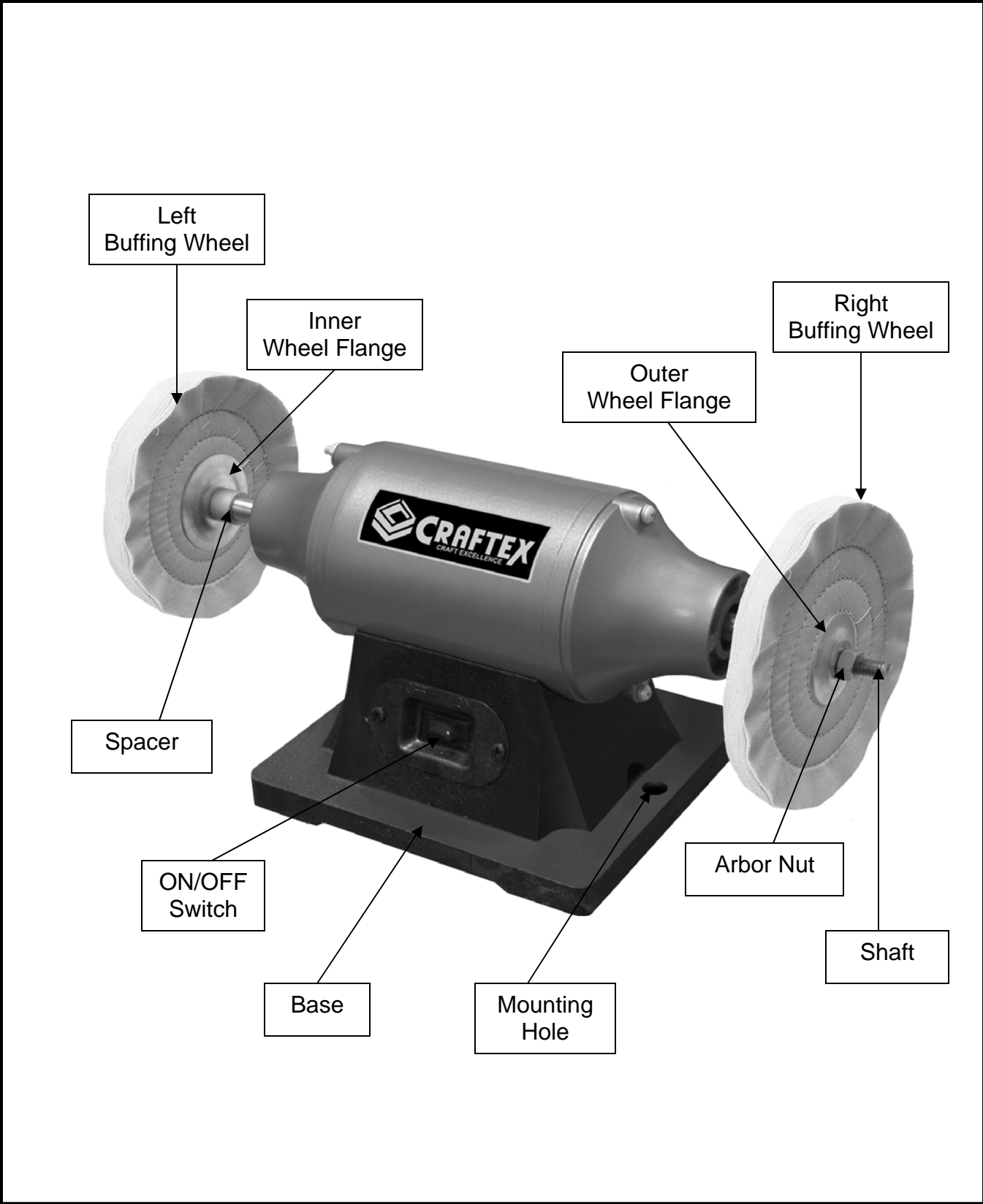
FEATURES

MODEL CT188 - 6" BUFFER

As part of the growing line of Crafttex woodworking equipment, we are proud to offer the CT188 a 6" Buffer. By following the instructions and procedures laid out in this user manual, you will receive years of excellent service and satisfaction. The CT188 is a professional tool and like all power tools, proper care and safety procedures should be adhered to.

- Motor3/4 HP
- Voltage 120
- Amperage..... 4.8
- Hertz..... 60
- PhaseSingle
- RPM 3450
- Wheel Diameter 6"
- Bore..... 1/2"
- Direction of Rotation of the Wheel (from left side)Clockwise
- Weight 9 Kgs

PHYSICAL FEATURES



UNPACKING

The machine is properly packaged and shipped in a carton for safe transportation. When unpacking, carefully inspect the carton and ensure that it has not been damaged during transit. Open the carton and check that the machine and the parts are in good condition.

PROPER GROUNDING

Grounding provides a path of least resistance for electric current to reduce the risk of electric shock.

Make sure the cord is plugged into a properly installed and grounded power outlet. To prevent electrical hazards, have a qualified electrician ensure that the line is properly wired.

Make sure that the buffer is connected to an outlet having the same configuration as the plug. If an adaptor plug is used, it must be attached to the metal screw of the receptacle.

It is recommended not to use extension cords with your CT188. Always try to position your machine close to the power source so that you do not need to use extension cords.

WARNING!

Improper connection of the equipment-grounding conductor can result in a risk of electric shock. Check with a qualified electrician if you are in doubt as to whether the outlet is properly grounded.

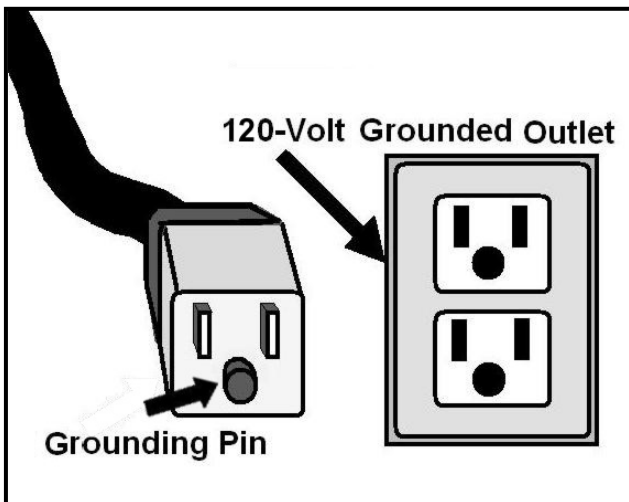


Figure-1 120-volts outlet for CT188

MOUNTING ON A WORKBENCH

The CT188 features two pre-drilled holes on its base which allow mounting the buffer to the workbench.

There are two ways to mount the buffer onto the workbench; through mount and direct mount.

"Through Mount" is the strongest mounting option where the holes are drilled all the way through the workbench. Hex bolts, washers and hex nuts are used to secure the buffer to the workbench. See figure-2.

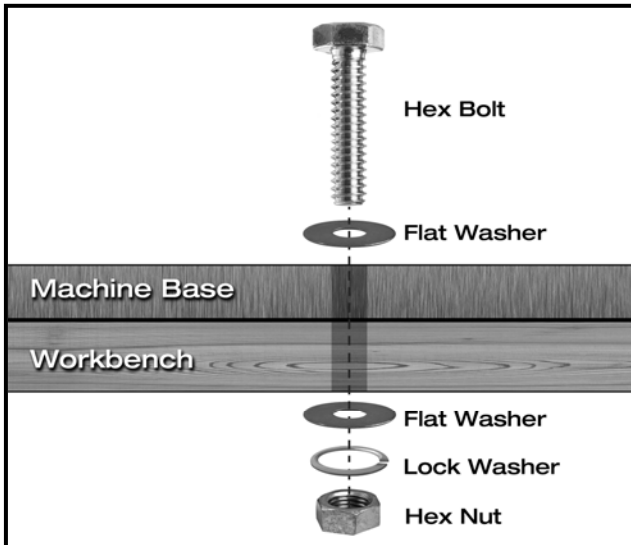


Figure-2 Through Mount

"Direct Mount" is to simply secure the buffer to the workbench using lag screws. See figure-3.

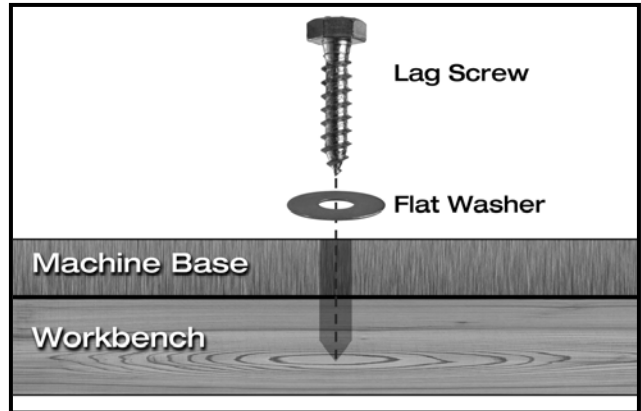


Figure-3 Direct Mount

INSTALLING BUFFING WHEELS

To install the buffing wheels on the CT188:

Make sure the cord is disconnected from the power source.

Remove the arbor nut.

Install spacers on the shaft (spacers are not needed when mounting several wheels on the shaft).

Slide the inner wheel flange onto the shaft.

Slide the buffing wheel on to the shaft and butt it against the inner wheel flange.

Slide the outer wheel flange and butt the flat side of the flange against the buffing wheel.

Tighten the arbor nut on to the shaft. Make sure the buffing wheel is firmly held in place and the hex nut is snug against the outer wheel flange. Use additional spacers (not supplied) if required.

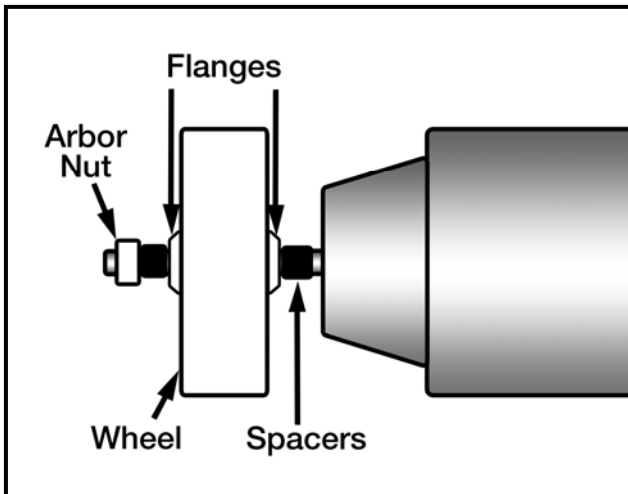


Figure-4 Installing the buffing wheel

Install the second buffing wheel on the other side of the buffer in the same manner.

TEST RUN

Once you have mounted your machine, it is then time for a test run to make sure that the machine works properly and is ready for operation.

During the test run if there is any unusual noise coming from the machine or the machine vibrates excessively, shut off the machine immediately and disconnect the cord from the power source. Check all the parts you have assembled, once again and investigate to find out the problem.

To test run the machine:

Make sure you have read and understood the safety instructions given in this manual.

Connect the cord to the power source and turn ON the machine.

The machine should start with little or no vibration.

Let the machine run for a few minutes and turn it OFF.

WARNING!

Do not make any adjustments while the machine is running. Failure to do so could result in serious personal injury.

OPERATION

The buffing operation will vary depending on the type of buffing wheel used and the type of material to be buffed.

To operate the buffer:

Wear safety glasses for the protection of your eyes.

Stand to the side of the buffer (out of the way of the buffing wheels).

Turn ON the buffer and let it reach full speed.

Select the proper polishing compound needed for the operation and apply to the surface of the rotating wheel.

Hold the work-piece with two hands or use a jig if the work-piece is too small. Slowly position the work-piece onto the buffing wheel. Do not push a sharp edge or corner into the buffing wheel, which could grab the work-piece.

Move the work-piece lightly and evenly back and forth on the edge of the buffing wheel.

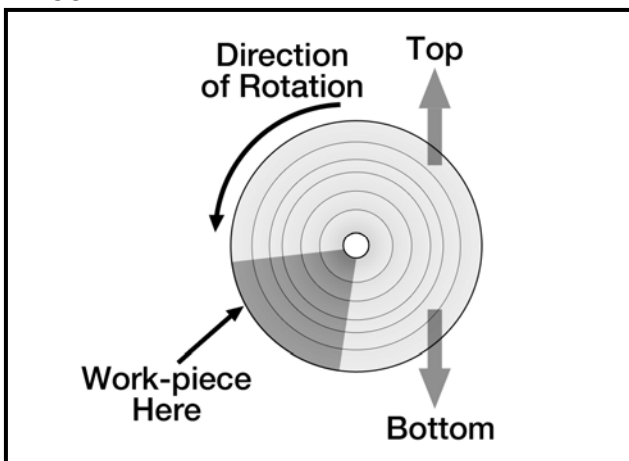


Figure-5 Area on the buffing wheel where the work-piece should contact

BUFFING TIPS

1. Always wear safety equipments when buffing. Wearing safety glasses for the protection of your eyes, dust mask to protect your lungs from microscopic particles and leather apron.
2. Clean the work-piece thoroughly before buffing. If the dirt on the work-piece is cleaned using chemical or water, make sure to dry it off using a rag before buffing.
3. Buffing compounds should be applied in small amounts with a wand or directly to the work-piece. When using wax-based polishing stick-type compounds, press it on the wheel for a few of seconds while the machine is running.
4. When buffing, make sure to use the area on the wheel shown in figure-5. If the work-piece comes in contact with the buffing wheel outside the indicated area, the work-piece may flip out of your hands.
5. Do not mix two different compounds on the same buffing wheel.
6. Keep the buffing wheels free from build-ups. Clean the wheels with light pressure, using a wheel rake to remove built-up compounds and metal particles.

MAINTENANCE

During the life of your machine, you will need to practice some regular maintenance to keep your buffer in peak performance condition.

WARNING!

Make sure the machine is turned OFF and the cord is disconnected from the power source before servicing and removing/replacing any components on the machine.

CHECK THE BUFFER DAILY FOR:

Loose mounting bolts

Worn or damaged power cord

Loose or damaged buffing wheels.

Any other unsafe condition

CHECK THE BUFFER MONTHLY FOR:

Worn or damaged shaft bearings

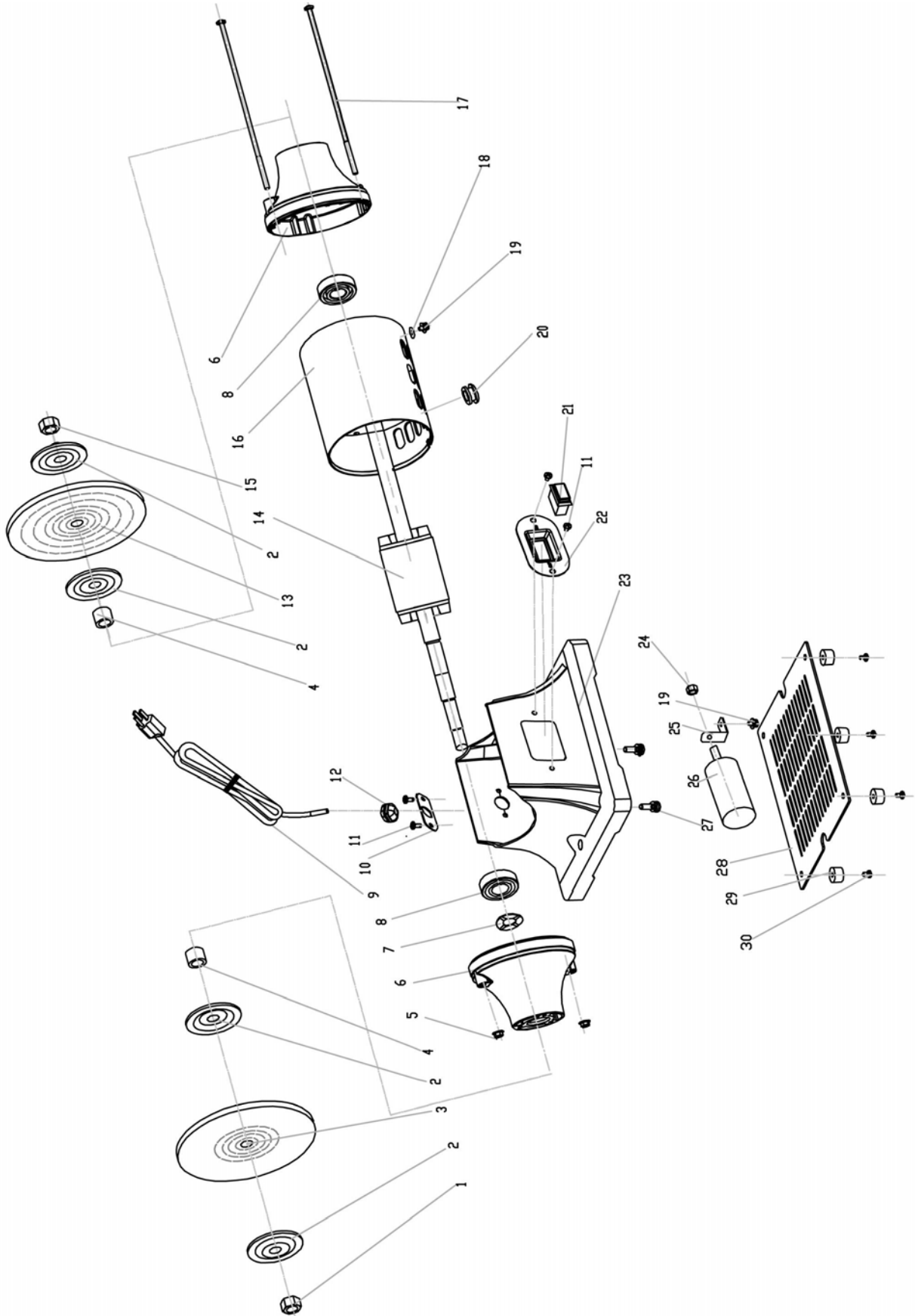
Worn or damaged cord

Worn switch

CLEANING

Vacuum excess wood chips, sawdust, or metal shavings and wipe off the remaining dust with a dry cloth. Use a resin dissolving cleaner if there is a resin built up.

CT188 PARTS DIAGRAM



CT188 PARTS LIST

ITEM	DESCRIPTION	QTY
1	HEX NUT I TYPE M12 LEFT	1
2	WHEEL FLANGE	4
3	SOFT BUFFING WHEEL	1
4	SPACER	2
5	HEX NUT M5	2
6	END BELL	2
7	WAVE ELASTIC COLLAR D35	1
8	BEARING	2
9	POWER CORD & PLUG	1
10	CORD CLIP BOTTOM PLATE	1
11	PHILIPS SCREW M5X8	4
12	CORD CLIPS	1
13	SPIRAL SEWN BUFFING WHEEL	1
14	ROTOR	1
15	HEX NUT I TYPE M12 RIGHT	1
16	STATOR	1
17	PHILIPS SCREW + FLAT WASHER M5X200	2
18	TOOTHED LOCKING WASHER D4	1
19	PHILIPS SCREW + SPRING WASHER + FLAT WASHER M4X8	2
20	POWER CORD BUSHING	1
21	SWITCH	1
22	SWITCH PLATE	1
23	BASE	1
24	HEX NUT I TYPE M8	1
25	CAPACITOR SUPPORT	1
26	CAPACITOR	1
27	PHILIPS SCREW + SPRING WASHER M6X20	2
28	BASE BOTTOM PLATE	1
29	RUBBER FOOT	4
30	PHILIPS SCREW + FLAT WASHER M4X20	4



WARRANTY

CRAFTEX 2 YEARS LIMITED WARRANTY

Craftex warrants every product to be free from defects in materials and agrees to correct such defects where applicable. This warranty covers **two years** for parts and 90 days for labour (unless specified otherwise), to the original purchaser from the date of purchase but does not apply to malfunctions arising directly or indirectly from misuse, abuse, improper installation or assembly, negligence, accidents, repairs or alterations or lack of maintenance.

Proof of purchase is necessary.

All warranty claims are subject to inspection of such products or part thereof and Craftex reserves the right to inspect any returned item before a refund or replacement may be issued.

This warranty shall not apply to consumable products such as blades, bits, belts, cutters, chisels, punches etceteras.

Craftex shall in no event be liable for injuries, accidental or otherwise, death to persons or damage to property or for incidental contingent, special or consequential damages arising from the use of our products.

RETURNS, REPAIRS AND REPLACEMENTS

To return, repair, or replace a Craftex product, you must visit the appropriate Busy Bee Tools showroom or call 1-800-461-BUSY. Craftex is a brand of equipment that is exclusive to Busy Bee Tools.

For replacement parts directly from Busy Bee Tools, for this machine, please call 1-800-461-BUSY (2879), and have your credit card and part number handy.

- All returned merchandise will be subject to a minimum charge of 15% for re-stocking and handling with the following qualifications.
- Returns must be pre-authorized by us in writing.
- We do not accept *collect* shipments.
- Items returned for warranty purposes must be insured and shipped pre-paid to the nearest warehouse
- Returns must be accompanied with a copy of your original invoice as proof of purchase. Returns must be in an un-used condition and shipped in their original packaging a letter explaining your reason for the return. Incurred shipping and handling charges are not refundable.
- Busy Bee will repair or replace the item at our discretion and subject to our inspection.
- Repaired or replaced items will be returned to you pre-paid by our choice of carriers.
- Busy Bee reserves the right to refuse reimbursement or repairs or replacement if a third party without our prior authorization has carried out repairs to the item.
- Repairs made by Busy Bee are warranted for 30 days on parts and labour.
- Any unforeseen repair charges will be reported to you for acceptance prior to making the repairs.
- The Busy Bee Parts & Service Departments are fully equipped to do repairs on all products purchased from us with the exception of some products that require the return to their authorized repair depots. A Busy Bee representative will provide you with the necessary information to have this done.
- For faster service it is advisable to contact the nearest Busy Bee location for parts availability prior to bringing your product in for repairs.