



CX200S
SLIDING TABLE ATTACHMENT
FOR TABLE SAW
User Manual



COPYRIGHT © 2011 BY CRAFTEX INDUSTRIES INC.

NO PORTION OF THIS MANUAL MAY BE PRODUCED WITHOUT
THE WRITTEN CONSENT OF CRAFTEX INDUSTRIES INC.



GENERAL SAFETY INSTRUCTIONS FOR MACHINES

Extreme caution should be used when operating all power tools. Know your power tool, be familiar with its operation, read through the user manual and practice safe usage procedures at all times.

- ❖ **ALWAYS** read and understand the user manual before operating the machine.
- ❖ **CONNECT** your machine ONLY to the matched and specific power source.
- ❖ **ALWAYS** wear safety glasses respirators, hearing protection and safety shoes, when operating your machine.
- ❖ **DO NOT** wear loose clothing or jewelry when operating your machine.
- ❖ **A SAFE ENVIRONMENT** is important. Keep the area free of dust, dirt and other debris in the immediate vicinity of your machine.
- ❖ **BE ALERT! DO NOT** use prescription or other drugs that may affect your ability or judgment to safely use your machine.
- ❖ **DISCONNECT** the power source when changing drill bits, hollow chisels, router bits, shaper heads, blades, knives or making other adjustments or repairs.
- ❖ **NEVER** leave a tool unattended while it is in operation.
- ❖ **NEVER** reach over the table when the tool is in operation.
- ❖ **ALWAYS** keep blades, knives and bits sharpened and properly aligned.
- ❖ **ALL OPERATIONS MUST BE** performed with the guards in place to ensure safety.
- ❖ **ALWAYS** use push sticks and feather boards to safely feed your work through the machine and clamp the work-piece (when necessary) to prevent the work-piece from any unexpected movement.
- ❖ **ALWAYS** make sure that any tools used for adjustments are removed before operating the machine.
- ❖ **ALWAYS** keep bystanders safely away while the machine is in operation.
- ❖ **NEVER** attempt to remove jammed cutoff pieces until the saw blade has come to a full stop.

UNPACKING

The sliding table attachment is properly packaged and shipped completely in a box for safe transportation. When unpacking, carefully inspect and ensure that nothing has been damaged during transit. Open the box and check that the sliding table and the parts are in good condition.

WARNING

Before assembling the sliding table to your table saw, make sure the switch is in the "OFF" position and the power cord is disconnected from the power source. Failure to do so may cause serious personal injury or death.

CONTENTS

QTY

A. Sliding Table	1
B. Extension Table	1
C. Fence Assembly	1
D. Knurled Fence Handles.....	2
E. Flip Stop	1
F. Lock Levers with T-Nuts.....	2
G. Support Legs.....	2
H. Feet.....	2
I. Mounting Screws & Washers	3

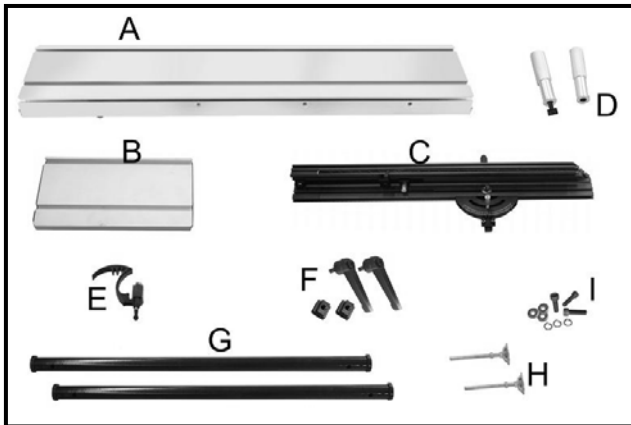


Figure-1 Inventory

ASSEMBLY

To install the sliding table attachment to the saw:

Thread the foot pad into the support leg as shown in figure-2. Do not tighten the jam nut at this time.

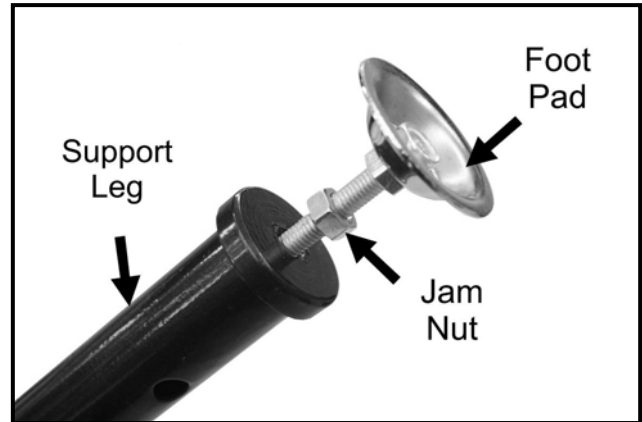


Figure-2 Threading the foot pad into the bottom of the support leg

Turn the sliding table upside down and slide the support leg T-nut into the sliding table miter gauge slot. Thread and secure the legs close to both ends of the sliding table. See figure-3.



Figure-3 Attaching the support leg to the sliding table

Make sure the switch is in the OFF position and the cord is up-plugged from the power source.

If there is an extension wing attached to the left side of the saw table, remove it. Get the help of an assistant or friend to turn the sliding table up right and hold it against the saw table.

Pull out and rotate the locking pin located under the sliding table as shown in figure-4 and slide the top part of the table to access the mounting holes.

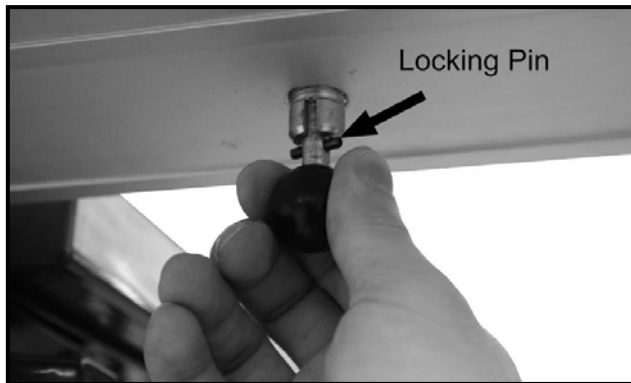


Figure-4 Pulling out the locking pin

Align the holes on the sliding table with the ones on the saw table and secure the sliding table to the saw table using three screws, washers and lock washers provided. See figure-4.



Figure-5 Installing the sliding table

IMPORTANT

Before checking the sliding table parallelism with the blade, make sure that the saw blade is parallel to the main table miter slot. For details on adjustments please see your CX200 user manual page-22

To check if the sliding table is parallel to the blade, use an adjustable square and measure the distance between the miter slot on the sliding table and the edge of the blade (front or back). Mark that edge of the blade with a marker.

Now, move the sliding table all the way to the rear of the table saw and rotate the blade with your hand, so that the marked point is opposite to the first position. (front or back) and slide the square to check if distance "A" is equals to distance "B".

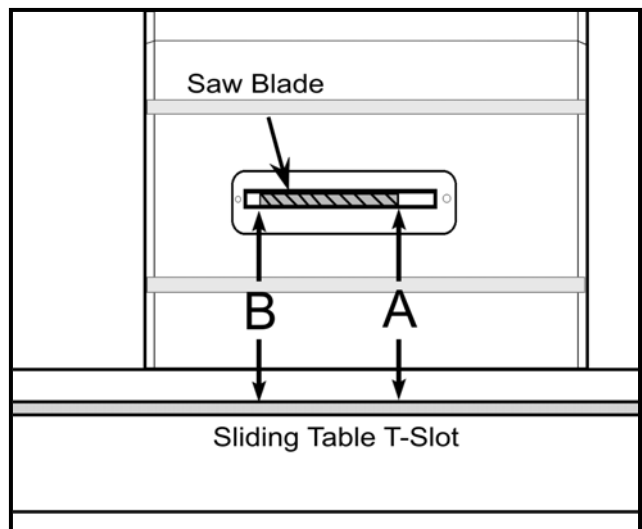


Figure-6 Checking the sliding table T-slot parallelism with the saw blade

If the sliding table is not parallel with the saw blade, you will need to use masking tape on the mating surfaces of the tables (front or back) to make the sliding table parallel to the saw blade.

Insert the extension table T-nuts through the T-slot on the outside edge of the sliding table. Attach the extension table to the sliding table as shown in figure-7 and secure it using lock levers provided.



Figure-7 Installing the extension table

Remove the T-bolt from the bottom of one of the knurled handles and slide it into the T-slot on the sliding table as shown in figure-8.

Slide the miter gauge into the sliding table miter gauge slot and position the fence on sliding table with the knurled handle T-bolt and miter gauge T-bolt passing through the fence slot as shown in figure-8.

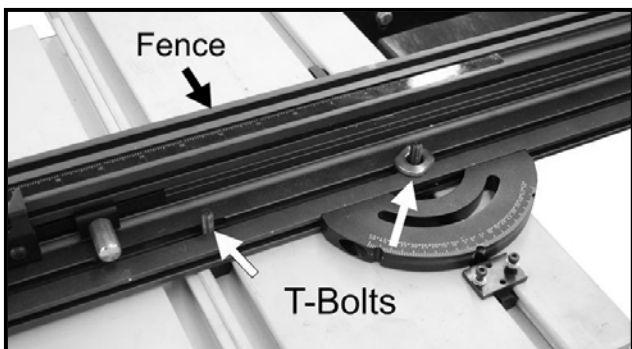


Figure-8 Positioning the fence on the table

Secure the fence by threading the knurled handles properly onto the T-bolts as shown in figure-9.

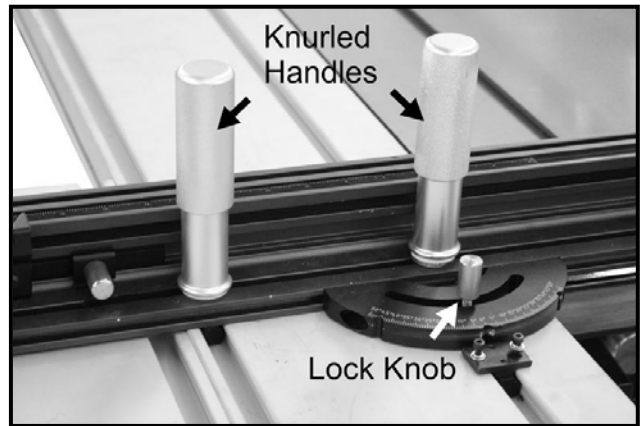


Figure-9 Installing the knurled handles

Tighten the miter gauge lock knob shown in figure-9 to secure the miter gauge in place.

Insert the flip stop T-nut into the T-slot on the fence and secure the flip stop to the fence using the lock lever as shown in figure-10.

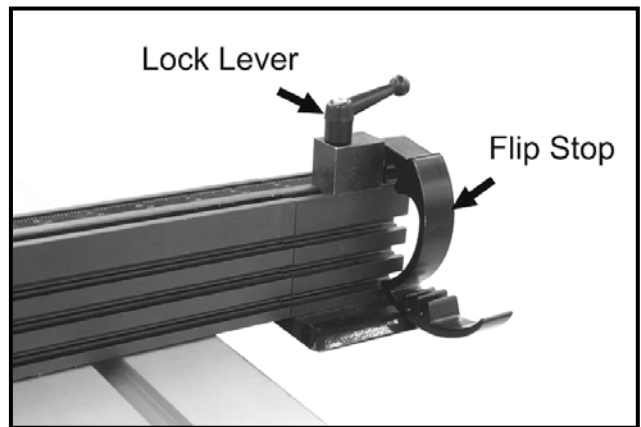


Figure-10 Installing the flip stop

A flip stop helps to make repetitive cuts of the same length and without adjusting the fence after each cut.

EXTENSION FENCE

The extension fence provides support to cut long work-pieces.

To position the extension fence, loosen the lock knob shown in figure-11 and pull the extension fence out as desired and retighten the lock knob.

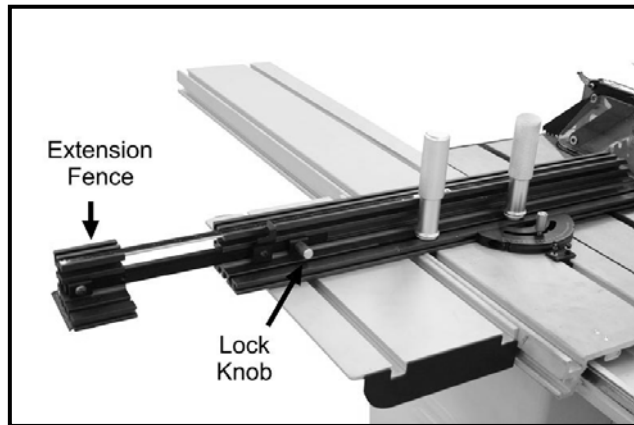


Figure-11 Extension fence

POSITIONING THE FENCE

The fence can be positioned anywhere on the sliding table at an angle between 50° right and 50° left.

To position the fence:

Make sure the switch is in the “OFF” position and the cord is un-plugged from the power source.

Loosen the two knurled handles securing the fence to the table and the miter gauge lock knob. Take the fence to the desired position and desired angle.

Re-tighten the knurled handles and the miter gauge lock knob to secure the fence in the desired angle.

The fence can be set to various positions to accommodate different angles when performing different cutting.

For Crosscutting

When crosscutting, position the fence to the rear of the sliding table and set it to 90° to the blade and lock it in place.

The extension table should be positioned just forward of the fence for maximum table support.

Pull the extension fence out to provide more work-piece support (if needed).

For Miter Cutting

Position the fence to the rear of the sliding table and set the angle between 50° right and 50° left.

Position the extension table to provide additional table support.

Pull the extension fence out and position it to provide support for the work-piece. (if needed)

Place the work-piece on the tables and hold it tightly against the fence.

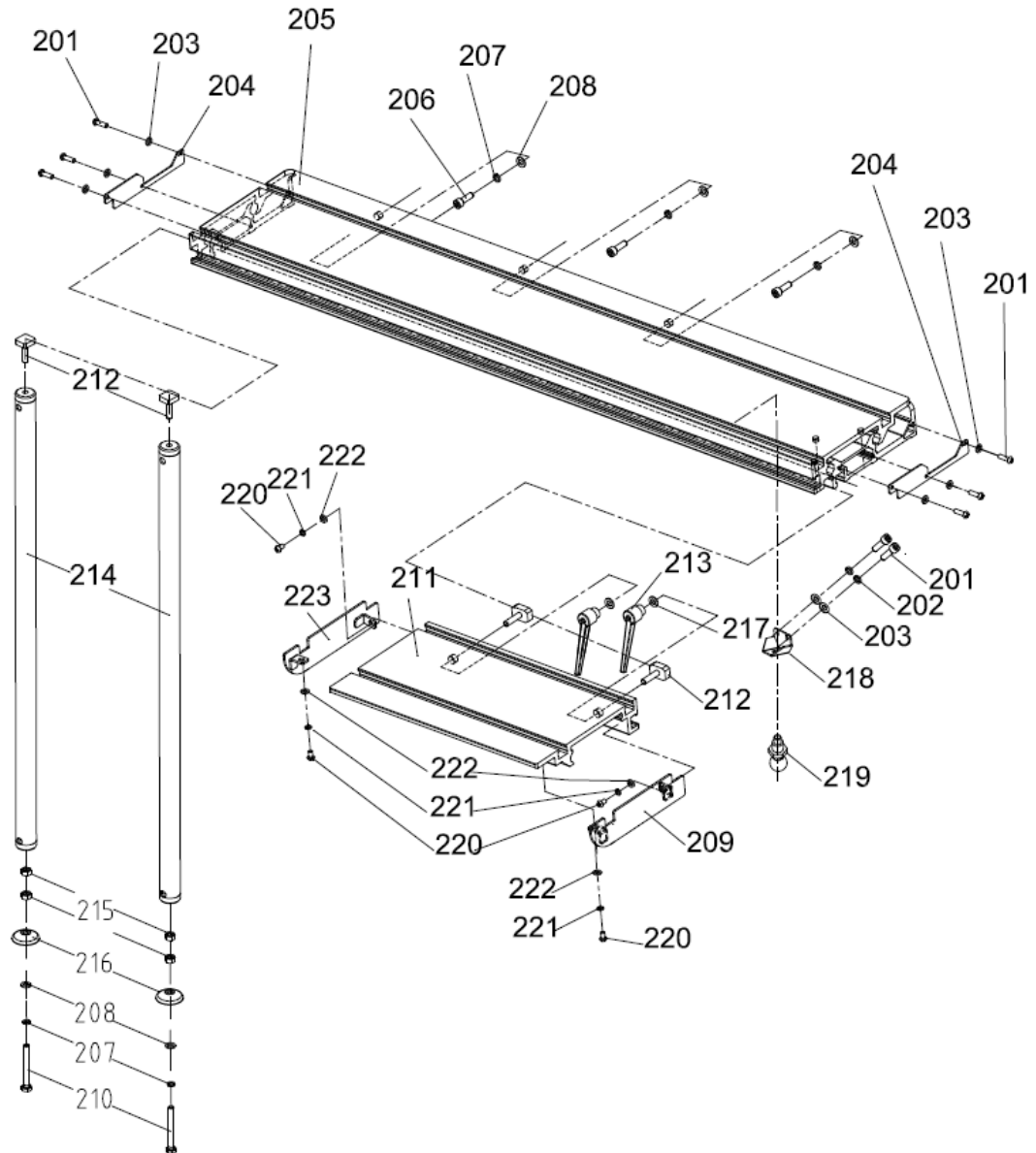
MAINTENANCE

During the life of your sliding table, you will need to practice some regular maintenance to keep your sliding table in high performance condition.

Clean the saw dust from the table surface and make sure there is no dust built up in the T-slots or around the table.

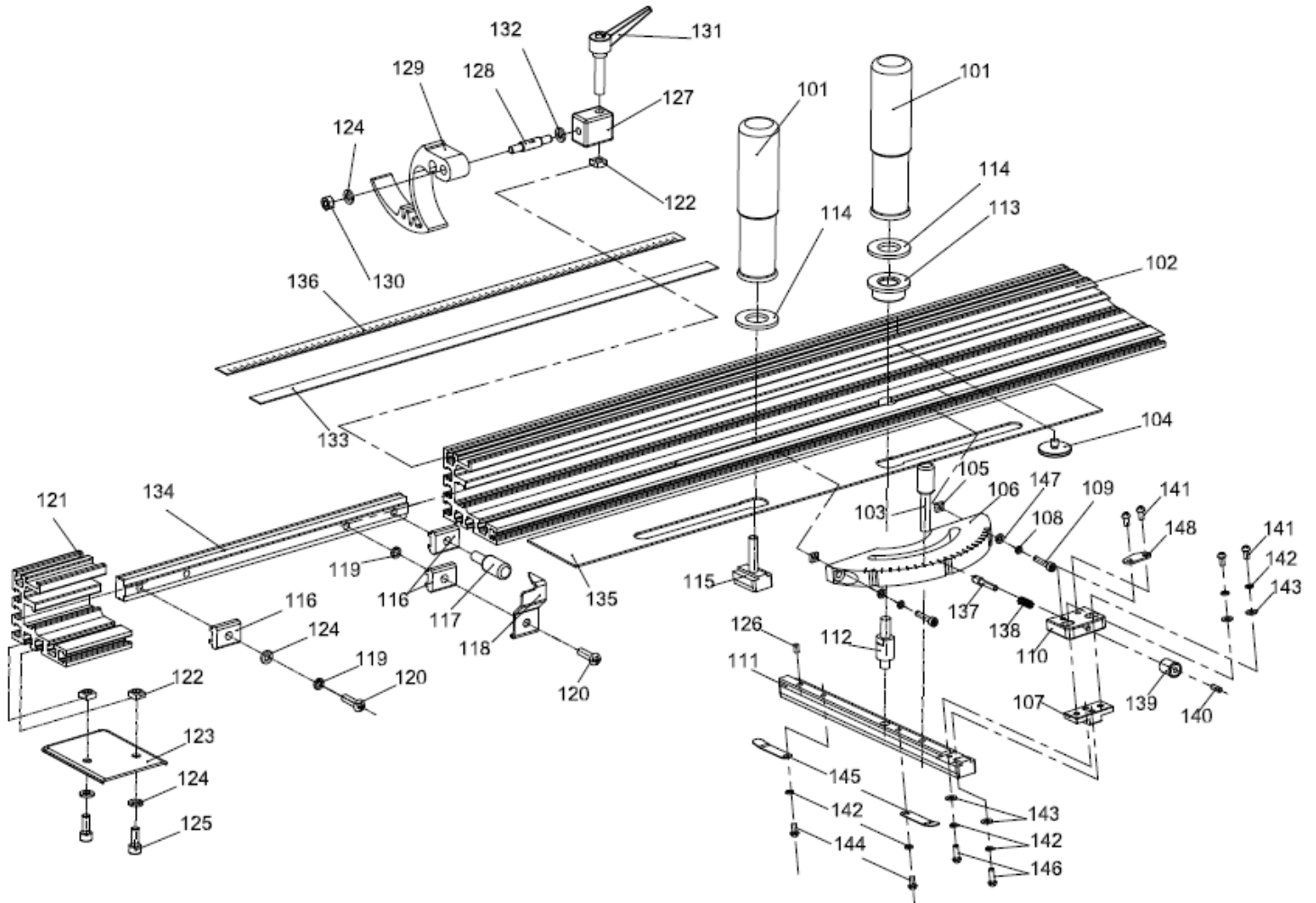
Keep the cast iron surface free from rust.

SLIDING TABLE PARTS BREAKDOWN & LIST



REF#	DESCRIPTION	QTY	REF#	DESCRIPTION	QTY
201	BUTTON HD SCREW M6-1*12	8	213	LOCK LEVER M8-1.25	2
202	LOCK WASHER 6mm	2	214	SUPPORT LEG	2
203	FLAT WASHER 6mm	8	215	HEX NUT M8-1.25	4
204	SLIDING TABLE SIDE COVER	2	216	FOOT PAD	2
205	SLIDING TABLE ASSEMBLY	1	217	LOCK LEVER FLAT WASHER 8mm	2
206	CAR SCREW M8-1.25*25	3	218	STOP PLATE	1
207	LOCK WASHER 8mm	5	219	STOP PIN ASSEMBLY	1
208	FLAT WASHER 8mm	5	220	BUTTON HD CAP SCREW M5-.8 X	4
209	FRONT TABLE SIDE COVER	1	221	LOCK WASHER 5mm	4
210	HEX BOLT M8-1.25*80	2	222	FLAT WASHER 5mm	4
211	EXTENSION TABLE	1	223	REAR TABLE SIDE COVER	1
212	T-NUT M8-1.25	4			

FENCE PARTS BREAKDOWN



FENCE PARTS LIST

REF#	DESCRIPTION	QTY
101	KNURLED HANDLE M8-1.25	2
102	LONG CROSSCUT FENCE	1
103	KNOB BOLT M6-1 X 35	1
104	HANDLE SCREW M6-1 X 8	1
105	SQUARE NUT M5-.8	2
106	MITER GUAGE BODY	1
107	T-SLOT BLOCK	1
108	LOCK WASHER 5MM	2
109	CAP SCREW M5-.8 X 20	2
110	STOP PIN BRACKET	1
111	MITER GUAGE T-SLOT BAR	1
112	MITER GUAGE PIVOT PIN	1
113	THREADED HANDLE BUSHING	1
114	TEFLON FLAT WASHER 8MM	2
115	T-BOLT M8-1.25 X 40	1
116	T-SLOT NUT M6-1	3
117	POINTER BRACKET KNOB BOLT M6-1	1
118	POINTER	1
119	LOCK WASHER 6MM	2
120	BUTTON HD CAP SCR M6-1 X 20	2
121	SHORT CROSSCUT FENCE	1
122	SQUARE NUT M6-1	3
123	CROSSCUT SUPPORT PLATE	1
124	FLAT WASHER 6MM	4

REF#	DESCRIPTION	QTY
125	CAP SCREW M6-1 X 16	2
126	SET SCREW M6-1 X 8	1
127	FLIP STOP BRACKET	1
128	FLIP STOP PIVOT PIN	1
129	FLIP STOP	1
130	LOCK NUT M6-1	1
131	LOCK LEVER M6-1 X 32	1
132	TEFLON FLAT WASHER 6MM	1
133	SCALE MOUNTING PLATE	1
134	CROSSCUT FENCE EXTENSION BAR	1
135	PVC PAD	1
136	SCALE STRIP	1
137	MITER GUAGE STOP PIN	1
138	COMPRESSION SPRING	1
139	STOP PIN KNOB	1
140	SET SCREW M4-.7 X 8	1
141	BUTTON HD CAP SCR M4-.7 X 12	4
142	LOCK WASHER 4MM	5
143	FLAT WASHER 4MM	3
144	BUTTON HD CAP SCR M4-.7 X 8	2
145	SPRING STRIP	2
146	BUTTON HD CAP SCR M4-.7 X 12	1
147	FLAT WASHER 5MM	2
148	POINTER	1



WARRANTY

CRAFTEX 3 YEARS LIMITED WARRANTY

Craftex warrants every product to be free from defects in materials and agrees to correct such defects where applicable. This warranty covers **three years** for parts and 90 days for labour (unless specified otherwise), to the original purchaser from the date of purchase but does not apply to malfunctions arising directly or indirectly from misuse, abuse, improper installation or assembly, negligence, accidents, repairs or alterations or lack of maintenance.

Proof of purchase is necessary.

All warranty claims are subject to inspection of such products or part thereof and Craftex reserves the right to inspect any returned item before a refund or replacement may be issued.

This warranty shall not apply to consumable products such as blades, bits, belts, cutters, chisels, punches etceteras.

Craftex shall in no event be liable for injuries, accidental or otherwise, death to persons or damage to property or for incidental contingent, special or consequential damages arising from the use of our products.

RETURNS, REPAIRS AND REPLACEMENTS

To return, repair, or replace a Craftex product, you must visit the appropriate Busy Bee Tools showroom or call 1-800-461-BUSY. Craftex is a brand of equipment that is exclusive to Busy Bee Tools.

For replacement parts directly from Busy Bee Tools, for this machine, please call 1-800-461-BUSY (2879), and have your credit card and part number handy.

- All returned merchandise will be subject to a minimum charge of 15% for re-stocking and handling with the following qualifications.
- Returns must be pre-authorized by us in writing.
- We do not accept *collect* shipments.
- Items returned for warranty purposes must be insured and shipped pre-paid to the nearest warehouse
- Returns must be accompanied with a copy of your original invoice as proof of purchase. Returns must be in an un-used condition and shipped in their original packaging a letter explaining your reason for the return. Incurred shipping and handling charges are not refundable.
- Busy Bee will repair or replace the item at our discretion and subject to our inspection.
- Repaired or replaced items will be returned to you pre-paid by our choice of carriers.
- Busy Bee reserves the right to refuse reimbursement or repairs or replacement if a third party without our prior authorization has carried out repairs to the item.
- Repairs made by Busy Bee are warranted for 30 days on parts and labour.
- Any unforeseen repair charges will be reported to you for acceptance prior to making the repairs.
- The Busy Bee Parts & Service Departments are fully equipped to do repairs on all products purchased from us with the exception of some products that require the return to their authorized repair depots. A Busy Bee representative will provide you with the necessary information to have this done.
- For faster service it is advisable to contact the nearest Busy Bee location for parts availability prior to bringing your product in for repairs.