



# Busy Bee Tools

## Universal Mobile Base BBMOBILE



### User's Manual

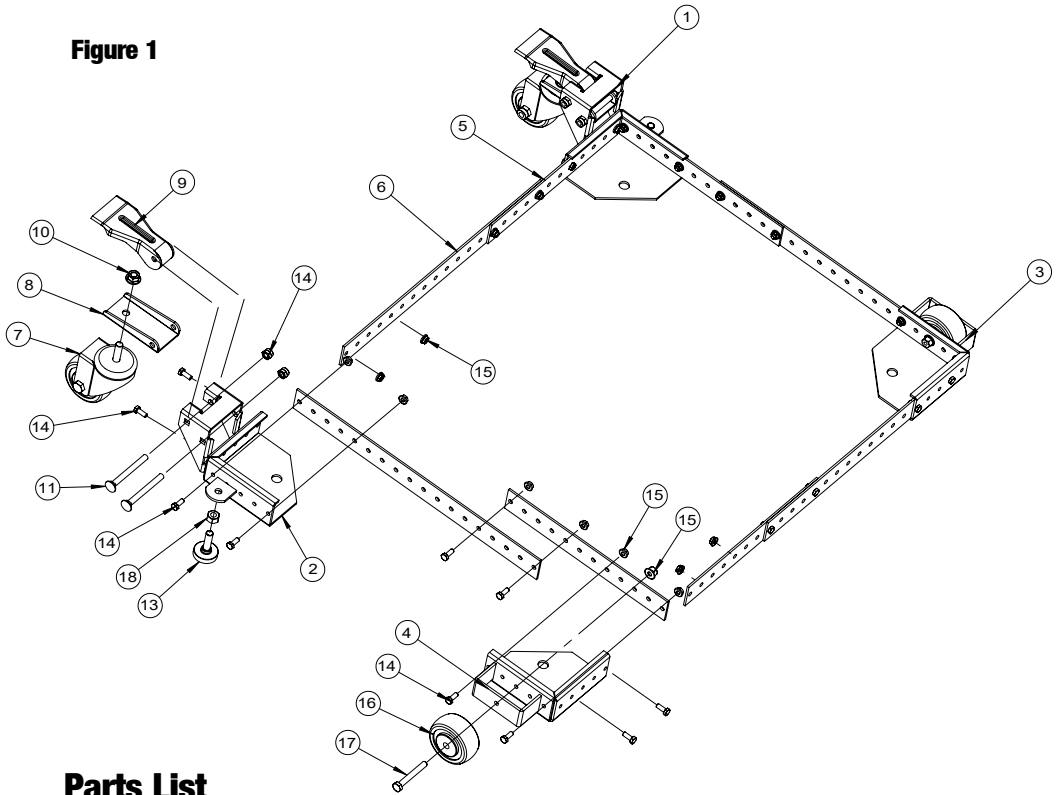


COPYRIGHT © 2024 BY BUSY BEE TOOLS LTD.

NO PORTION OF THIS MANUAL MAY  
BE REPRODUCED WITHOUT THE WRITTEN  
CONSENT OF BUSY BEE TOOLS LTD.



**Figure 1**



**Parts List**

	<b>Description</b>	<b>Qty</b>
1	FRONT LEFT CORNER	1
2	FRONT RIGHT CORNER	1
3	REAR LEFT CORNER	1
4	REAR RIGHT CORNER	1
5	18" SIDE RAIL	4
6	12" SIDE RAIL	4
7	3" SWIVEL CASTER	2
8	SWIVEL PLATE	2
9	FOOT LEVER	2
10	M10 JAM NUT	2
11	CARRIAGE BOLT M8-80	4
12	M8 NUT	4
13	RUBBER GLIDE FOOT	2
14	HEX BOLT M6-15	24
15	M6 FLANGE NUT	26
16	3" WHEEL	2
17	AXLE BOLT M6-60	4
18	M10 NUT	2

# Safety Instructions for Mobile Bases

1. Be careful when moving to limit any finger pinch points.
2. Place base on a level surface and adjust levelers before placing the machine in position. This should keep the machine from rocking, while testing it for stability.
3. Test for stability in both the up (on the casters) and the down positions. Exercise caution when testing the stability of top heavy machines (drill presses, band saws, etc.).
4. Unplug any power tool before moving or repositioning your tool.
5. Always test your set-up for stability and safety after repositioning.
6. Care should be taken when planning the orientation of the machine onto the universal mobile base. Transfer of weight off of the levelers to the casters will result in the machine tilting 1/2" toward the fixed wheels. When positioning top heavy tools such as a drill press or band saw, take advantage of the center of gravity, and position so that it will remain stable while on casters.
7. Never use your machine while it is suspended on the two swivel casters. Always lower the machine onto the non-skid levelers before operating.
8. When moving, always push the base, not the machine.

## Assembly Instructions

Tools required: M6, M8, M10 wrench, M6 socket, tape measure, pliers.

1. Unpack and identify all components and hardware. Make sure there are no missing parts and that there is no shipping damage.

Note: Read instructions thoroughly before proceeding.

2. Carefully measure the footprint of your machine (or whatever you are mobilizing) and add about 1" to the dimension. (1" allows clearance for the fasteners). Keep in mind the base adjusts in 1" increments.
3. Carefully review assembly examples shown below to help you determine the fixed wheel, caster and leveler placement. As these are examples only, you must determine what best suits your particular machine's requirements for stability.
4. Select and arrange the Corners and the Side Rails as necessary to assemble the base to your machine's footprint.

Note: If help to lift your machine into the base is not available, you may want to assemble the base around your machine. Use 2 x 4's to block the machine up.

5. Bolt the Side Rails to the corners and each other using these simple rules:

A: All connections require the use of (2) M6-15 bolts (14) and (2) M6 nuts (15) at each end of the connections.

B: Position Side Rails into corners as far as is practical.

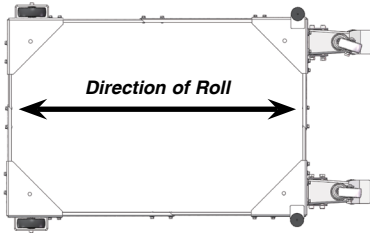
C: It is recommended you keep your machine stand symmetrical by using the same size and positioning of Side Rails on opposite sides. For maximum strength, use 18" rails along the side whenever possible to connect the swivel corner to the rest of the base.

**Note: Insert bolts so that the nuts are on the inside of the mobile base.**

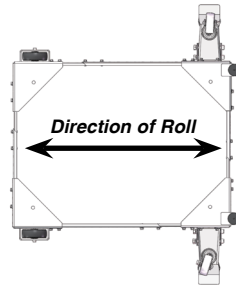
6. Re-check dimensions, then tighten all bolts and nuts.

# Assembly Examples

Be sure to follow safety and Assembly Instructions. Keep in mind the actual operation of your machine and the effect it has on overall stability.



A long, narrow base, such as on a jointer, would benefit from this arrangement. Most machines may be arranged to the convenience of the user.



A short narrow base, such as found on a drill press or bandsaw, may benefit from this arrangement. Due to swivel rotation base may sit out of level. Rotate swivel wheel away from base to correct.

## Attaching Wheels and Casters

1. Review the diagrams for wheel, caster and leveler placement.
2. Attach swivel plate (8) to the (Front-Right) caster bracket corner (2) using M8-80 carriage bolt (11) and M8 self locking nut (12). For proper orientation, refer to Figure 1 .
3. Attach foot lever (9) to caster bracket using M8-80 carriage bolt (11) and M8 self-locking nut (12).
4. Attach swivel caster (7) to swivel plate (8) using M10 nut (10).
5. Insert threaded rubber foot (13) into the threaded hole in leveling foot bracket. Spin M10 nut (18) onto the top of the threaded rubber foot (13).
6. Repeat steps 1 through 5 on the (Front-Left) caster bracket corner (1).
9. Slip wheel (16) into position on left and right corners (3 & 4), refer to Figure 1 .
10. Insert M6-60 bolt (17) through hole in the outer edge of wheel housing, through wheel (16), and secure to corner using M6 flange nut (15). Use care not to overtighten. Overtightening will prevent the wheel from turning.
11. Lift your machine or item to be mobilized into place.

**CAUTION: Check stability in both the up and down positions before using. Failure to follow safety and assembly instructions may result in personal injury or damage to product.**