



# Busy Bee Tools

## Deluxe Pro Bandsaw Fence BBPBSFENCE



### User's Manual



COPYRIGHT © 2024 BY BUSY BEE TOOLS LTD.

NO PORTION OF THIS MANUAL MAY  
BE REPRODUCED WITHOUT THE WRITTEN  
CONSENT OF BUSY BEE TOOLS LTD.



v1.0



## General Shop Safety Instructions

Notice: Safety First! The paramount concern in operating this equipment is safety. It is imperative to adhere strictly to the following instructions. Neglecting any of the listed guidelines may lead to risks such as electric shock, fire hazards, or severe personal injury.

This tool is specifically designed for certain applications. We emphasize the importance of refraining from modifying or repurposing the tool for any other use beyond its designated application. If you have inquiries regarding its appropriate application, refrain from using the tool until you have communicated with us and received our guidance. Please refer to the below safety symbols



**CAUTION**

Implies an imminently hazardous situation, which, if not avoided, could result in death or serious injury.



**DANGER**

Indicates a potentially hazardous situation, which, if not avoided, could result in death or serious injury.



**WARNING**

Indicates a potentially hazardous situation, which, if not avoided, could result in minor or moderate injury.

*Please Note that this manual has some instructions and processes to help you maintain and prolong the life of your machine please perform all the recommended cleaning and maintaining processes diligently.*

# Introduction

It is with distinct honor and excitement that we present to you the BBPBSFENCE Busy Bee Tools Professional Band Saw Fence, a premier addition to our esteemed line of precision woodworking equipment. At Busy Bee Tools, we are committed to engineering excellence, and this fence exemplifies our dedication to providing craftsmen with superior tools for their trade.

This manual has been meticulously crafted to guide you through the setup, safe operation, and maintenance of your new BBPBSFENCE Professional Band Saw Fence. By following the detailed instructions and recommendations contained within these pages, you can anticipate many years of dependable and satisfying performance. This commitment to quality underscores Busy Bee Tools' promise of enhancing customer satisfaction through innovation and reliability.

Included within this manual are precise specifications, illustrations, and photographs that represent the BBPBSFENCE in its current configuration. Please note, in our pursuit of continual improvement and to exceed industry standards, Busy Bee Tools reserves the right to make enhancements to this model without prior notice.

For your convenience, we continuously update all our product manuals which are available on our website at [www.busybeetools.com](http://www.busybeetools.com). We encourage you to visit this site regularly to download the latest updates and ensure that you are always informed about the best practices for operating and maintaining your machine. At Busy Bee Tools, your safety and satisfaction are our utmost priority, and we are dedicated to ensuring that your experience with the BBPBSFENCE is exceptional.

**Welcome to the Busy Bee Tools family, where craftsmanship meets innovation.**

## Contact us

In case you require additional assistance or have any further questions, please do not hesitate to reach out to our dedicated Customer Service and Technical Support Department at:

Busy Bee Tools Head Office  
130 Great Gulf Drive  
Concord ON, L4K 5W1

Or at any of our stores across Canada.

[Visit our website www.busybeetools.com](http://www.busybeetools.com) for the latest deals and for more information.

Call us Toll Free: 1-800-461-2879.

Email us at: [cs@busybeetools.com](mailto:cs@busybeetools.com)

Our team of experts are here to provide you with the guidance and support you need to ensure the safe and efficient operation of your machine. Your satisfaction and safety are our top priorities, and we are committed to assisting you in any way we can.



# **SPECIFIC SAFETY INSTRUCTIONS**

1. Before beginning the assembly process, make sure the machine is unplugged and the power switch is in the OFF position.
2. If you are not familiar with the operation of the machine, seek assistance from a qualified individual.
3. Only install the 6" Tall Rip Fence System after thoroughly reading all provided instructions.
4. Use the detailed directions provided in this manual to correctly install the new Fence System, ensuring proper and safe operation of the machine.
5. Conduct your work in a clean, well-lit area to keep tools and machine parts organized and safe.
6. Refer to your fence's Operation Manual for complete details on safety instructions, assembly, adjustments, and operation.
7. Using the bandsaw in any way not specified, including unauthorized modifications or using non-approved parts, may cause damage and void the warranty.



# ASSEMBLY

## TOOLS REQUIRED:

- 16mm (5/8") or adjustable wrench
- Measuring ruler or tape with a metric scale
- 14mm (9/16") or larger diameter twist drill and power drill (required only if your bandsaw table's front holes for mounting the new front rail need to be enlarged or newly drilled).

The BBPBSFENCE 6" Tall Rip Fence System from Busy Bee Tools features an innovative, Rapid Align Fence System, that simplifies the adjustment of your rip fence to counteract any 'drift' or blade deviation during lumber ripping. The 6" tall extruded aluminum fence offers excellent vertical support for re-sawing operations. When used horizontally for ripping, it provides plenty of space for the operator's hands, ensuring safe and efficient feeding of stock through the cut. To enhance your bandsaw with the BBPBSFENCE fence system, start by removing the existing fence and rail that came with your machine. Next, install the new front rail onto the front skirt of your table and attach the fence and carrier assembly. Comprehensive instructions are provided to help you utilize the anti-drift feature and to demonstrate the fence's flexibility for a variety of ripping tasks.

## REMOVE YOUR OLD FENCE

1. Detach the existing fence and front rail that are currently installed on your bandsaw.

Note: For specific instructions on safely completing this process on your machine model, refer to the original Operator's Manual that came with your bandsaw. You may need tools or wrenches of different sizes than those mentioned above.\*

## INSTALLING THE FRONT RAIL

To install the new front rail on the table's front skirt, ensure that the two mounting holes are 14mm (9/16") or larger in diameter, and follow the dimensions outlined in Figure 1. This alignment will position the '0' calibration on the rail with the center of the slot in the table, ensuring accurate fence settings for ripping. Additionally, it will position the carrier assembly correctly on the rail so the fence can move smoothly above the table surface without binding.

1. If necessary, enlarge or drill new holes in the table front skirt according to the dimensions provided in Figure 1.
2. Attach the fence guide rail (#12 see diagram) to the front edge of the table using the two fence connecting rods, nuts, and washers (#13, 14, 5 see diagram) as shown in Figure 2.

Ensure that the rail is parallel to the table surface and is equal distance from the front edge of the table at both the left and right sides. The '0' calibration on the rail should align with the center of the blade slot in the table.

If you encounter any alignment issues, adjust the position by enlarging the mounting holes in the table edge, allowing for slight adjustments left, right, up, or down. Use a power drill with a metal twist drill bit or a round metal file to remove any excess material.

Do not fully tighten the nuts at this stage.

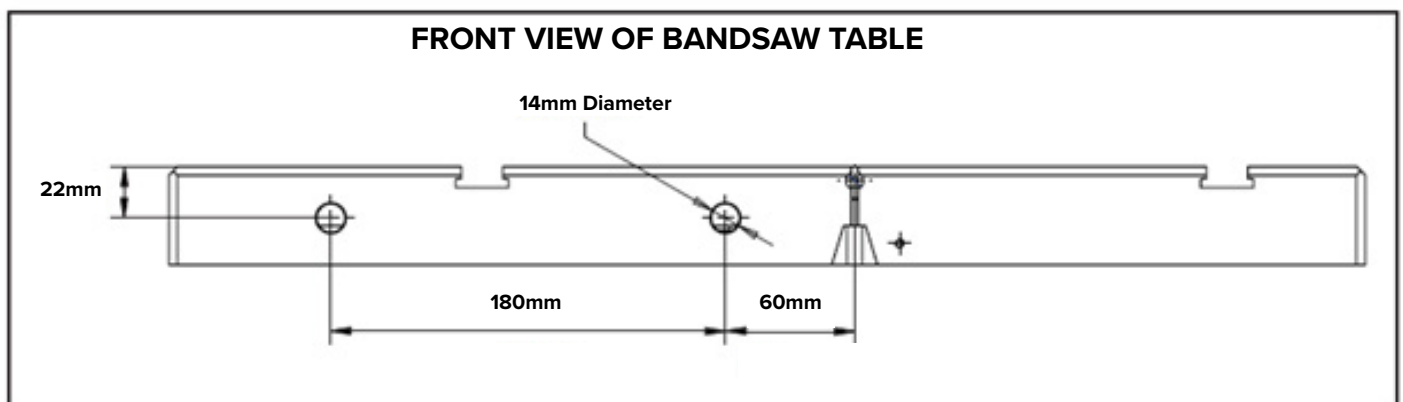


Figure 1

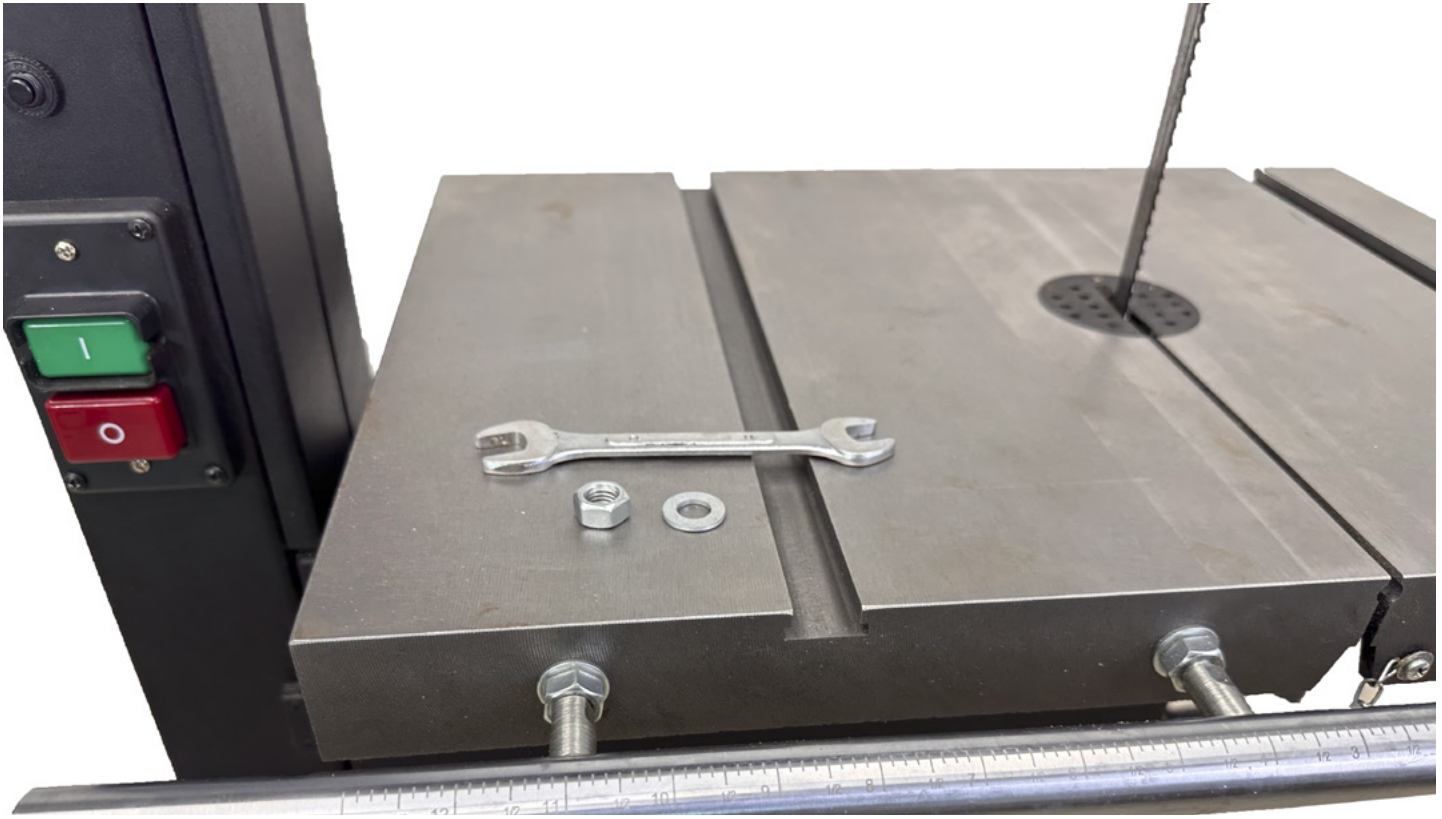


Figure 2

## RIP FENCE ASSEMBLY

With the front rail loosely in place, begin assembling the fence carrier and fence onto the rail. Make any final adjustments by ensuring the fence rests evenly along its entire length on the table and moves smoothly across the table's width.

1. Slide the Fence Carrier Assembly (#9) onto the fence's guide rail as shown in Figure 3.
2. Attach the sliding block (#11) to the rip fence (#18), slide the fence on the fence carrier figure 3 and secure it by tightening the fence lock Knob (#7) located on the opposite side of the fence (Figure 3, A).
3. Move the carrier with the attached fence along the rail to check the rail's alignment. Adjust the rail's position on the table edge if necessary, and then tighten the rail nuts (#14) to secure it in place.
4. Use the front Locking Handle (#10) to secure the fence assembly on the rail, ensuring it does not move during use.
5. Refer to the following pages for additional adjustments, including setting the fence at 90° to the table. Further rail adjustments may be needed.



Figure 3



## ADJUSTING THE RIP FENCE FOR DRIFT

The BBPBSFENCE Bandsaw Rip Fence System from Busy Bee Tools includes a cutting-edge fence carrier designed to effortlessly adjust and eliminate 'drift,' ensuring the fence remains parallel to the blade. Additionally, this system allows for quick transitions of the fence between vertical and horizontal positions, and facilitates its use on either side of the blade. This versatility enhances the accuracy and flexibility of your cutting operations.

To adjust the fence for drift, follow these steps:

1. Loosen the side Handle (#7, Fig. 4, A) that secures the rip fence to the Fence Carrier (#9, B). Ensure the handle is completely loosened to allow for smooth adjustments.
2. Loosen the Locking Knob (#2, Fig. 4, C), which is situated on the fence carrier. This step is crucial for making the necessary adjustments to the fence position.
3. Turn the top Adjusting Handle (#1, D) to move the fence left or right as needed. This adjustment ensures the fence aligns parallel to the blade and the miter saw slots in the table. The handle turns a Cam (#4, E) that presses against the fence, pivoting it precisely as required.
4. Once the fence is properly aligned, re-tighten the Handle and Locking Knob that were loosened in steps 1 and 2. Make sure they are securely tightened to maintain the correct fence position during operation.

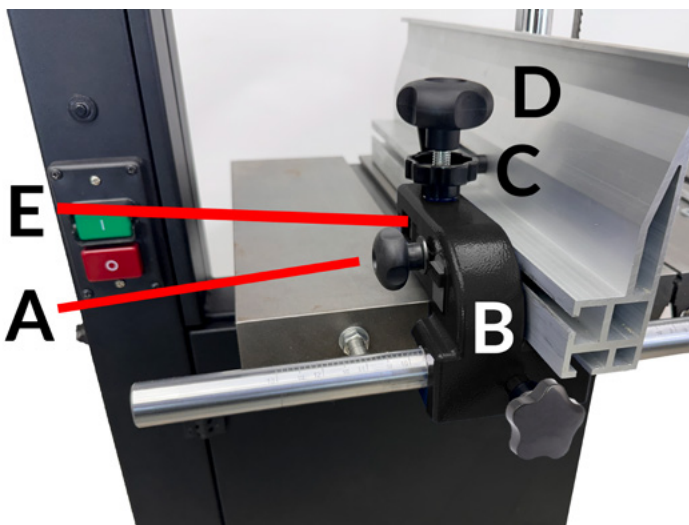


Figure 4

## ADJUSTING THE FENCE TO 90°

To ensure the fence is perpendicular to the table use an appropriate square. If the fence is not at a 90-degree angle, adjust either side of the Guide Rail by raising or lowering it until the fence is perfectly perpendicular to the table surface, as illustrated in Figure 5.

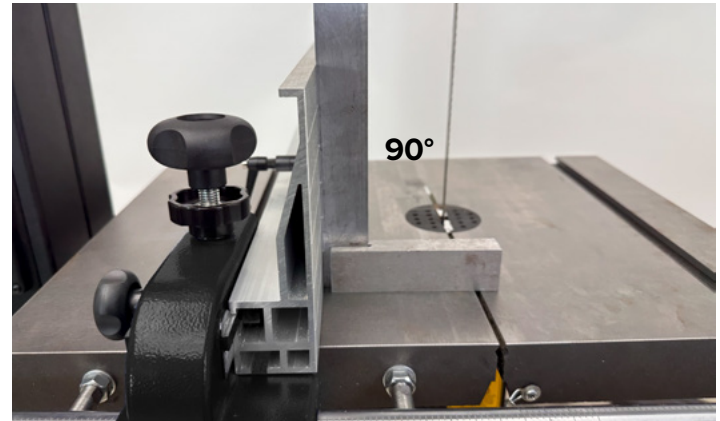


Figure 5

Once the fence is correctly aligned at 90 degrees, fully tighten the fence bar nuts to secure the position.

## ALIGNING THE FENCE WITH THE TABLE

Ensure the fence is perfectly flat or parallel to the table surface. Check that the gap between the table and the bottom of the fence is consistent along the entire length of the fence. This uniform gap is critical for accurate cutting operations. The rear, bottom of the fence features a Nylon Plate (#23) that facilitates smooth sliding of the fence across the table surface. This plate creates a small, intentional gap between the fence and the table, as shown in Figure 6.

If you notice a significant gap that disrupts the alignment, consult pages 4 and 5 for detailed instructions on properly mounting and repositioning the front fence rail. These adjustments will help you achieve the necessary alignment for optimal performance and precision.



Figure 6

## ADJUSTING THE FENCE ON THE CARRIER

The fence can be easily adjusted from a vertical to a horizontal position, or switched from mounting on the left side of the blade to the right. These adjustments can be made using the carrier's handles and hardware, providing flexibility for various cutting tasks.

To change the fence from vertical to horizontal:

1. Loosen the side Handle (#7, Fig. 7, A) that secures the rip fence to the Fence Carrier (#9, B). Ensure the handle is completely loosened to facilitate easy movement.
2. Slide the fence forward to detach it from the carrier's Sliding Block (#11, Fig. 7, C). Carefully remove the fence, ensuring that it clears the sliding block without any obstruction.
3. Once the fence is off the carrier, it can be positioned horizontally on either side of the blade as needed for your specific cut requirements.

The fence must be laid face down and you can slide it on the carrier see the figure below.

Just remember if switching sided see the next section for guidance.

4. Rotate the fence to its horizontal position and slide it back onto the carrier. The bottom of the fence has a slot that fits onto the sliding block, aligning with the small, raised key on the side of the carrier (Fig. 7, D).
5. After positioning the fence, retighten the side handle to secure it firmly in place on the carrier. Ensure the handle is tightened sufficiently to prevent any movement during operation.

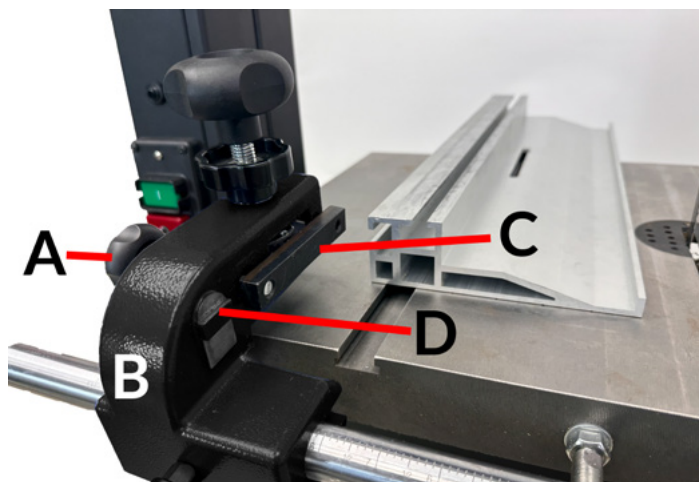


Figure 7

## SWITCHING THE FENCE FROM LEFT TO RIGHT

To move the fence from the left side of the carrier to the right side, allowing you to use the rip fence on the right of the blade, follow these detailed steps:

1. Loosen the side Handle (#7, Fig. 7, A) that secures the rip fence to the Fence Carrier (#9, B). Make sure the handle is completely loosened to allow for easy removal of the fence.
2. Slide the fence forward to detach it from the carrier's Sliding Block (#11, Fig. 7, C). Once removed, move the carrier along the front rail to position it on the right side of the table and blade.
3. Completely unscrew the side handle (A) from the sliding block and reassemble the component (C) on the opposite, left side of the carrier. Next, turn the fence 180 degrees end-to-end and slide it back onto the carrier (Fig. 8 & 9). Ensure the fence is aligned correctly with the carrier.
4. After repositioning the fence, retighten the side handle to secure it firmly on the carrier. This will ensure the fence remains stable during use.
5. Finally, check the fence for any drift and make the necessary adjustments as outlined in the instructions on pages 4 and 5. This step is crucial to ensure the fence is properly aligned and functioning correctly.



Figure 8



## RE-SAWING

Re-sawing is a critical operation for cutting thicker wood pieces into thinner boards, veneers, or slices, allowing for more efficient use of material and creating matching grain patterns. The BBPBSFENCE includes a re-saw guide bar (#15) designed to correct any blade wandering that may occur during re-sawing operations. This guide bar enhances precision and ensures smooth, straight cuts.

To use the re-saw bar, first attach it to the slot on the fence. Make sure the re-saw bar is aligned with the front of the blade. This alignment is crucial for maintaining a straight cut. Next, draw a reference line along the length of your workpiece. This line will serve as a guide during the re-sawing process.

Position the workpiece against the re-saw bar, using it as a pivot point. As you feed the wood through the blade, gently angle the workpiece left or right against the bar to follow the reference line accurately. This technique helps in maintaining the correct path, ensuring that the cut stays true to the desired line (Fig. 10).

It's important to note that the re-saw bar is not necessary for all re-sawing tasks. When cutting flat stock, proper blade tension, selection, and guide setup generally suffice to achieve a straight cut without the re-saw bar. For optimal results, use a sharp, high-quality blade designed for re-sawing, and ensure that your bandsaw is correctly set up and maintained.

In summary, the re-saw bar provided with the BBPBS14 is a valuable tool for enhancing the accuracy of your re-sawing operations. By using the bar to guide your workpiece and maintain a straight cut, you can achieve better results and make more efficient use of your wood materials. Proper setup and maintenance of your bandsaw, along with the use of suitable blades, are essential for successful re-sawing.

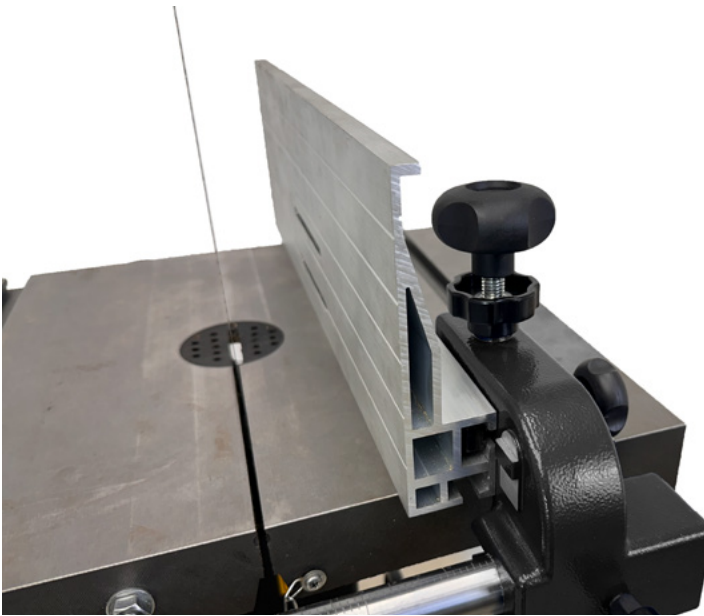


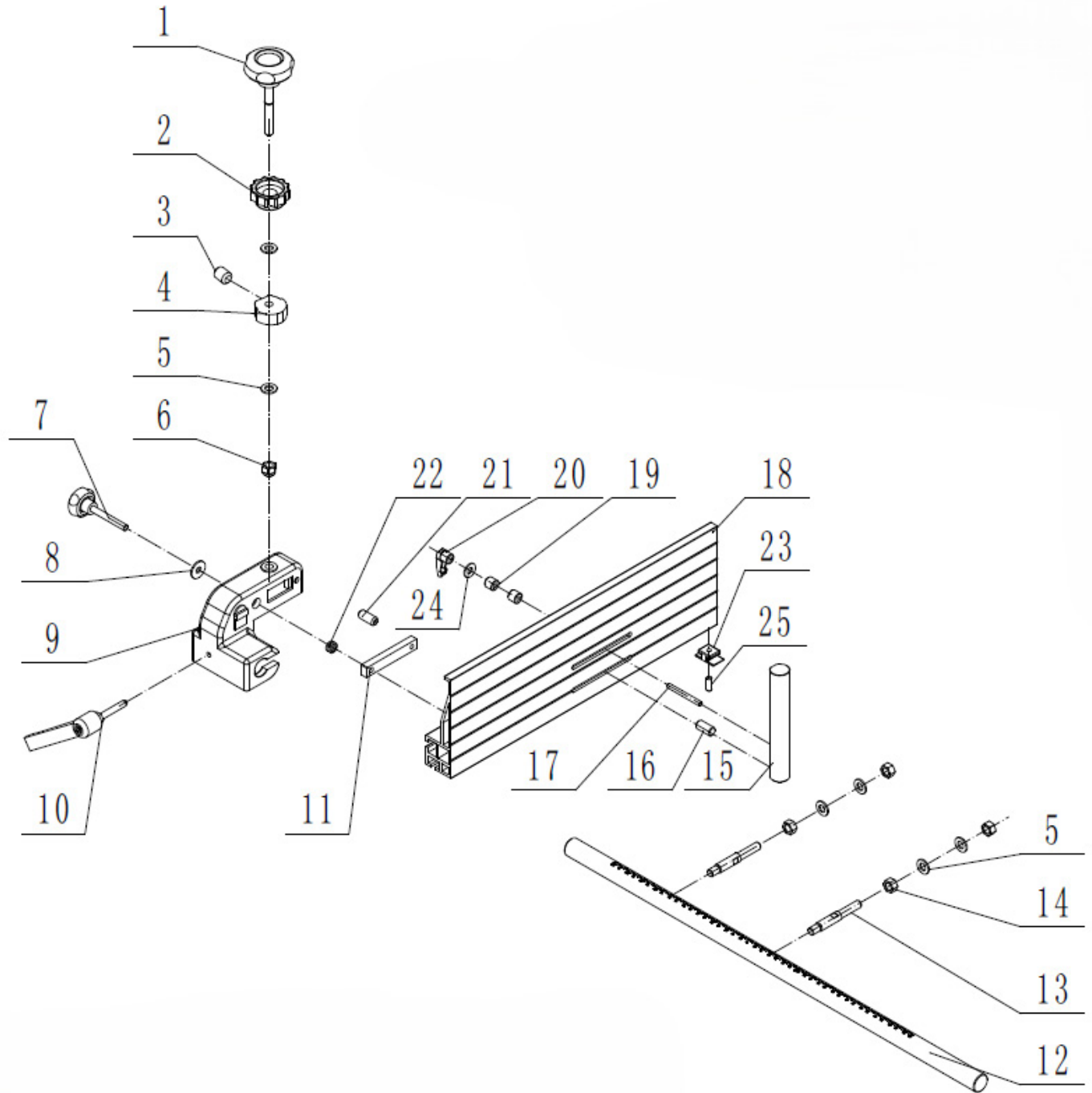
Figure 9



**Pivot the workpiece against the re-saw bar**

Figure 10

# BBPBS Fence Assembly Diagram and Parts List



Parts List

Item #	Part Number	Description	Qty.
1	PBBPBS18601	Adjust Handle	1
2	PBBPBS18602	Locking Knob	1
3	PBBPBS18603	Screw - Soc Head Cap M8-1.25 X 10	1
4	PBBPBS18604	Cam Eccentric	1
5	PBBPBS18605	Washer - Flat	6
6	PBBPBS18606	Nut - Hex M10-1.5	1
7	PBBPBS18607	Round handle	1
8	PBBPBS18608	Washer M8	1
9	PBBPBS18609	Rip fence carrier	1
10	PBBPBS18610	Lock handle	1
11	PBBPBS18611	Sliding block	1
12	PBBPBS18612	Front guide rail	1
13	PBBPBS18613	Connecting rod	2
14	PBBPBS18614	Nut - Hex M10-1.5	4
15	PBBPBS18615	Re-saw bar	1
16	PBBPBS18616	Pin- Threaded	1
17	PBBPBS18817	Bolt M4-0.70X	1
18	PBBPBS18618	Rip fence	1
19	PBBPBS18619	Tube Bushing 5mm ID	1
20	PBBPBS18620	Locking Handle	1
21	PBBPBS18621	Pin- Roll	2
22	PBBPBS18622	Spring	1
23	PBBPBS18623	Nulon Plate	1
24	PBBPBS18624	Washer M4	1
25	PBBPBS18625	Set Screw	1





# Busy Bee Tools

## BUSY BEE TOOLS 2 YEARS LIMITED WARRANTY

Busy Bee Tools warrants every product to be free from defects in materials and agrees to correct such defects where applicable. This warranty covers **two years** for parts and 90 days for labor (unless specified otherwise), to the original purchaser from the date of purchase but does not apply to malfunctions arising directly or indirectly from misuse, abuse, improper installation or assembly, negligence, accidents, repairs or alterations or lack of maintenance.

***Proof of purchase is necessary.***

All warranty claims are subject to inspection of such products or part thereof and Busy Bee Tools reserves the right to inspect any returned item before a refund or replacement may be issued.

This warranty shall not apply to consumable products such as blades, bits, belts, cutters, chisels, punches etc.

Busy Bee Tools shall in no event be liable for injuries, accidental or otherwise, death to persons or damage to property or for incidental contingent, special or consequential damages arising from the use of our products.

### **RETURNS, REPAIRS AND REPLACEMENTS**

To return, repair, or replace a Busy Bee Tools product, you must visit the appropriate Busy Bee Tools showroom or call 1-800-461-BUSY.

For replacement parts directly from Busy Bee Tools, for this machine, please call 1-800-461-BUSY (2879), and have your model number and part number & payment option ready.

- All returned merchandise will be subject to a minimum charge of 15% for re-stocking and handling with the following qualifications.
- Returns must be pre-authorized by us in writing.
- We do not accept collect shipments.
- Items returned for warranty purposes must be insured and shipped pre-paid to the nearest warehouse
- Returns must be accompanied with a copy of your original invoice as proof of purchase. Returns must be in an un-used condition and shipped in their original packaging a letter explaining your reason for the return. Incurred shipping and handling charges are not refundable.
- Busy Bee will repair or replace the item at our discretion and subject to our inspection.
- Repaired or replaced items will be returned to you pre-paid by our choice of carriers.
- Busy Bee reserves the right to refuse reimbursement or repairs or replacement if a third party without our prior authorization has carried out repairs to the item.
- Repairs made by Busy Bee Tools are warranted for 30 days on parts and labour.
- Any unforeseen repair charges will be reported to you for acceptance prior to making the repairs.
- The Busy Bee Parts & Service Departments are fully equipped to do repairs on all products purchased from us with the exception of some products that require the return to their authorized repair depots. A Busy Bee representative will provide you with the necessary information to have this done.
- For faster service it is advisable to contact the nearest Busy Bee location for parts availability prior to bringing your product in for repairs.

