



# MODEL CT226

## 3/4 HP MINI DUST COLLECTOR



# TABLE OF CONTENTS

Specific Safety Instructions.....	3
Specification & Electrical Information .....	4
Assembly & Operation.....	5
Parts Diagram .....	8
Parts List .....	9
Warranty.....	10

# CT226 3/4 HP MINI DUST COLLECTOR SPECIFIC SAFETY INSTRUCTIONS

- ⚠ The CT226 is designed to collect saw dust only.
- ⚠ **Never** attempt to use this Dust Collector to vacuum water or any other liquids.
- ⚠ **NEVER** try to use this Dust Collector to collect large wood scraps.
- ⚠ **NEVER** attempt to use this Dust Collector to collect metal materials such as screws, nails or other metal parts.
- ⚠ **NEVER** remove the filter/collection bag with the motor running.
- ⚠ **NEVER** use this Dust Collector near flammable or combustible liquids, gases, gasoline or other fuels, lighter fluid, cleaners, oil based paints, natural gas, hydrogen or explosive dusts such as coal dust, magnesium dust, grain dust or gun powder.
- ⚠ **NEVER** vacuum anything that is burning or smoking such as cigarettes, matches or hot ashes.
- ⚠ **NEVER** operate the Dust Collector with all blast gates closed.
- ⚠ **ALWAYS** disconnect the CT226 from its power source when changing or emptying the bag.
- ⚠ **MAINTAIN AND SERVICE** your Dust Collector regularly as instructed in the user manual.
- ⚠ **MAKE SURE** you have read and understood all the safety instructions in the manual and you are familiar with your CT226, before operating it. If you fail to do so, serious injury could occur.

## **WARNING!**

*The safety instructions given above can not be complete because the environment in every shop is different. Always consider safety first as it applies to your individual working conditions.*

# SPECIFICATIONS

## Technical Specifications

Model..... CT226  
Voltage.....120V  
Amperage.....5.7A  
Cycle/Phase.....60Hz, Single Phase  
Air Suction.....590 CFM  
Inlet/Outlet Diameter .....4”

## ELECTRICAL INFORMATION

### Power Supply

#### **WARNING!**

*Your dust collector must be connected to a 120V, 15-AMP circuit. Failure to connect in this way can result injury from shock or fire.*

### Grounding

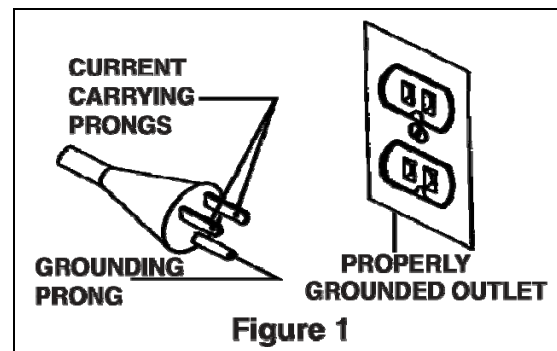
This appliance must be grounded, if it should malfunction or breakdown, grounding provides a path of least resistance for electric current to reduce the risk of electric shock. This appliance is equipped with a cord having equipment-ground conductor and grounding plug. The plug must be inserted into an appropriate outlet that is properly installed and grounded in accordance with all local codes and ordinances. See fig.1

### For grounded, cord – connected appliances:

This appliance is for use on a circuit having a normal rating more than 120volt and is factory – equipped with a specific electric cord and plug to permit connection to a proper electric circuit. Make sure that the appliance is connected to an outlet having the same configuration as the plug. No adapter should be used with this appliance. If the appliance must be reconnected for use on a different circuit, qualified service personnel should make the reconnection.

#### **WARNING!**

*Improper connection of the equipment-grounding conductor can result in a risk of electric shock. Check with a qualified electrician or service person if you are in doubt as to whether the outlet is properly grounded. Do not modify the plug provided with the appliance – if it will not fit the outlet have a proper outlet installed by a qualified electrician.*



# ASSEMBLY & OPERATION

## Installing Casters

This dust collector comes with 2 locking casters and 2 non-locking casters. Install both locking casters on the same side. To install, attach to the underside of the frame, make sure each caster (A) Fig.3 has a nut (B) threaded all the way and a washer (C) placed over the threaded shaft of the caster. Insert the caster shaft through the underside of the frame and secure with the acorn nut (D) provided. Use two open end wrenches to securely tighten the caster to the frame. Repeat for all of the remaining casters.

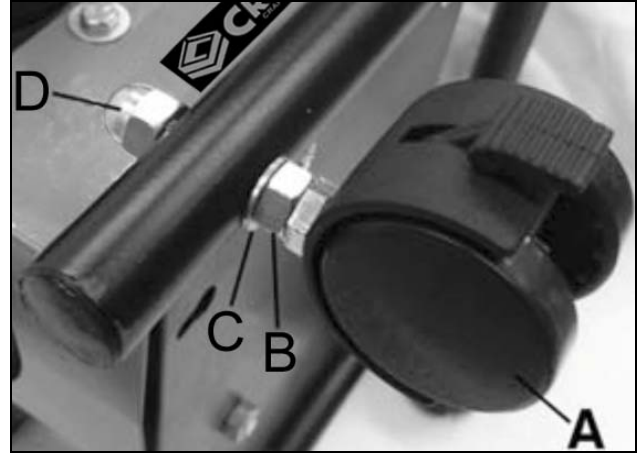


Figure 3

## Attaching Dust Collector Bag

Attach the dust collector bag as shown in Fig.4. Slide the bag (A) over the dust outlet (B) and fix into place with the hose clamp supplied (C). Tighten the hose clamp with a flathead screwdriver.

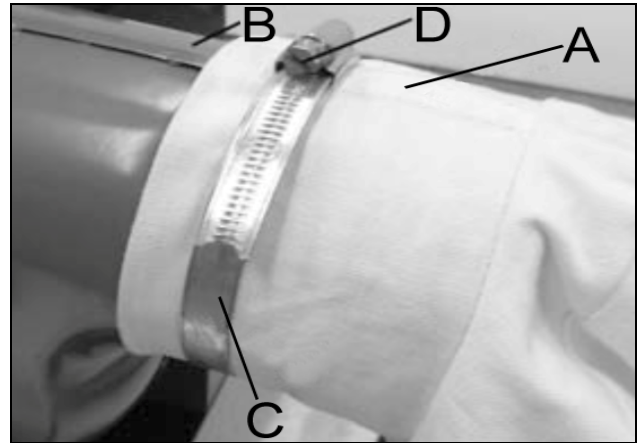


Figure 4

## Power ON/OFF

**Note: Before connecting the power cord to a power source, make sure that the switch is in the “OFF” position.**

Turn on the dust collector by flipping the switch to the ON position (A) in Fig.5, flip to the OFF position to turn the dust collector off. There is a removable safety key (B) in the center toggle of the switch that can be removed when in the OFF position. When the key is removed the dust collector cannot be turned back on before re-inserting the safety key.

The dust collector is equipped with a circuit breaker reset button (C) Fig.5, if the motor overloads, the circuit breaker will be tripped and the motor will stop. Turn the switch to the OFF position and let the motor cool down for 15 minutes. Press the reset button before re-starting the motor.

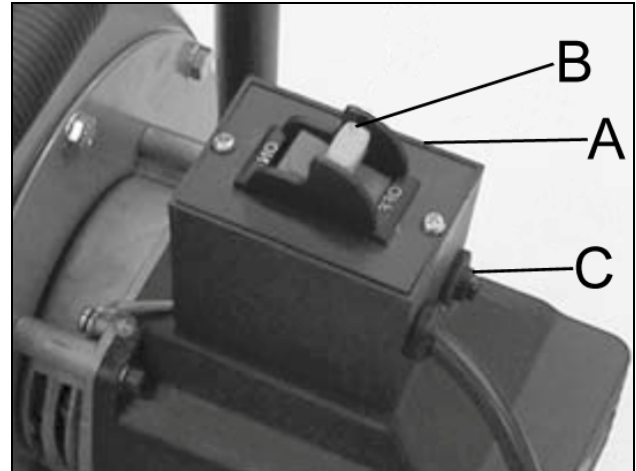


Figure 5

## Installing 4" Hose

### ***WARNING!***

*Make sure the switch is in the OFF position and that the power cord is unplugged from the power source prior to installing the hose to the inlet or at any time your hands come near the inlet.*

Now that your dust collector is ready for use, you can connect 4" diameter flexible hose (not included) from your dust port on your tool to the 4" plastic inlet port on the dust collector. Place a hose clamp (Not Supplied) over the end of the hose and slide the hose over the inlet (A) Fig.6. Fix the hose to the inlet with a clamp.



Figure 6

## Maintenance

Over time and in extreme situations dust may accumulate in the motor, every effort should be made to prevent foreign material from entering the motor. When operated under conditions likely to permit accumulations of dust, dirt or waste within the motor, a visual inspection should be made at frequent intervals. Accumulations of dry dust can usually be blown out with a low pressure air hose. **CAUTION:** To avoid eye injury or adverse reaction to dust, high air pressure should not be used, especially in poorly ventilated areas. The operator performing this task should wear safety goggles and a mask. Do not use the dust collector if the power cord becomes worn or frayed. If any servicing becomes necessary it should be performed by a qualified technician or by an authorized Busy Bee Tools service center.

## Emptying the Quick-Zip Dust Bag

Emptying your dust bag is quick and simple and does not require the removal of the bag from the machine. A convenient Quick-Zip zipper is incorporated at the end of the dust bag. Open the zipper over a trash container and simply empty the contents of the dust bag. Close the zipper and you are ready to go again.

## Replacing the Carbon Motor Brushes

This dust collector comes with a brush type motor, the carbon brushes get worn down with use and need to be inspected regularly. If the wear on the brushes reach the limit mark on either brush, it is time to replace BOTH of the carbon brushes. To inspect or replace the brushes, unscrew the brush cap (A) Fig.7, pull the carbon brush out, if the wear has reached the limit, replace the brush with the replacement set. If the brush has not reached the limit mark, reinstall it the same way as before and secure the brush cap. Repeat these steps for the second carbon brush on the other side of the motor housing.

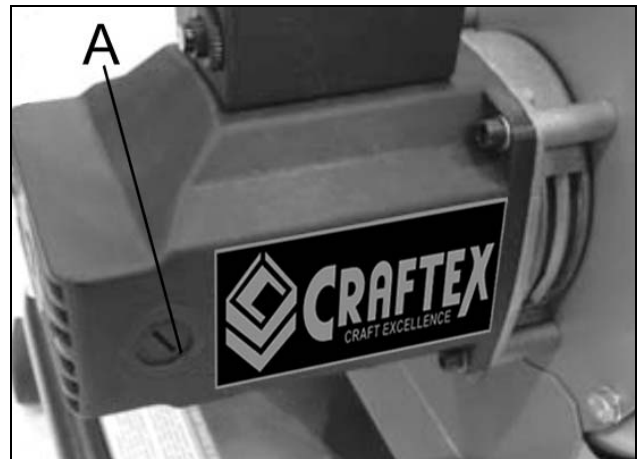
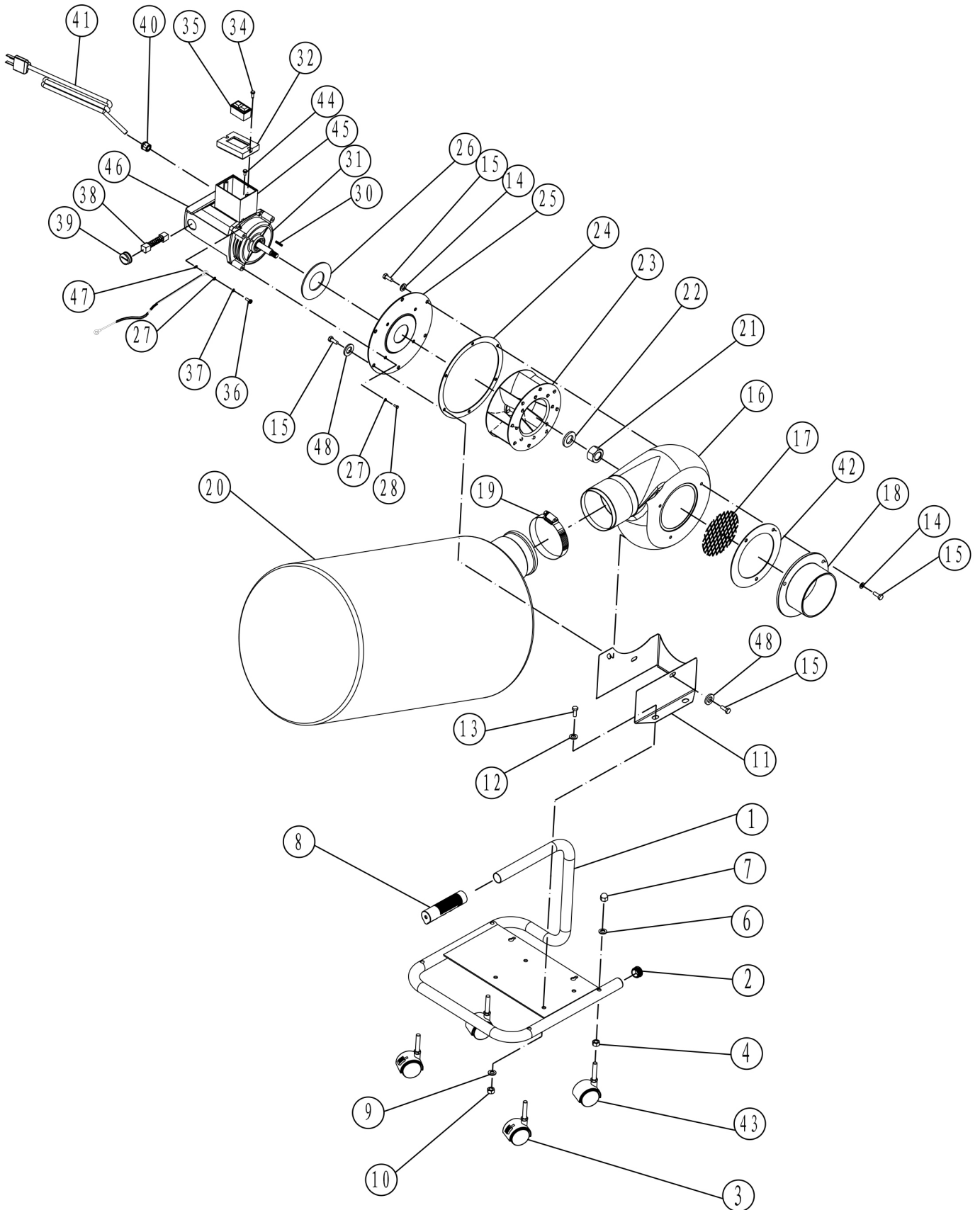


Figure 7

# CT226 Parts Diagram





## CT226 Parts List

KEY	REF #	DESCRIPTION	KEY	REF #	DESCRIPTION
1	PCT22601	SUPPORT HANDLE AND MACHINE BASE	26	PCT22626	GASKET
2	PCT22602	END CAP	27	PCT22627	WASHER - FLAT 5
3	PCT22603	CASTER 2" - LOCKING	28	PCT22628	BOLT - HEX HD M5-0.8 X 10
4	PCT22604	NUT - HEX M8-1.25			
			30	PCT22630	KEY 4 X 4 X 20
6	PCT22606	WASHER - FLAT 8	31	PCT22631	SWITCH COVER PLATE
7	PCT22607	NUT - ACORN M8-1.25	32	PCT22632	SCREW - PHILLIP HD ST4.2X12
8	PCT22608	HANDLE COVER			
9	PCT22609	WASHER - FLAT 8	34	PCT22634	SCREW - PHILLIP HD ST4.2X12
10	PCT22610	NUT - HEX M8-1.25	35	PCT22635	SWITCH - B2417
11	PCT22611	MACHINE MOUNTING BRACKET	36	PCT22636	SCREW - PHILIP HD 5 x 20
12	PCT22612	WASHER - FLAT 8	37	PCT22637	WASHER - SPRING 5
13	PCT22613	BOLT - HEX HD M8-1.25 X 16	38	PCT22638	MOTOR BRUSHES
14	PCT22614	WASHER - FLAT 6	39	PCT22639	BRUSH COVER
15	PCT22615	BOLT - HEX HD M6-1.0 X 14	40	PCT22640	STRAIN RELIEF 8
16	PCT22616	COLLECTOR BODY	41	PCT22641	POWER CORD
17	PCT22617	SAFETY SCREEN	42	PCT22642	RUBBER GASKET
18	PCT22618	INLET COVER	43	PCT22643	CASTER 2" NON LOCKING
19	PCT22619	CLAMP	44	PCT22644	SCREW - PHILLIPS HD 4 X 16
20	PCT22620	COLLECTION BAG	45	PCT22645	SWITCH BOX
21	PCT22621	NUT - HEX M10	46	PCT22646	MOTOR
22	PCT22622	WASHER - FLAT 10	47	PCT22647	WASHER - EXTERNAL TOOTH 5
23	PCT22623	IMPELLER	48	PCT22648	WASHER - FLAT 6
24	PCT22624	GASKET	226	PCT226226	MOTOR BRUSHES
25	PCT22625	COLLECTOR COVER			



## WARRANTY

### CRAFTEX 2 YEAR LIMITED WARRANTY

Craftex warrants every product to be free from defects in materials and agrees to correct such defects where applicable. This warranty covers **two years** for parts and 90 days for labour (unless specified otherwise), to the original purchaser from the date of purchase but does not apply to malfunctions arising directly or indirectly from misuse, abuse, improper installation or assembly, negligence, accidents, repairs or alterations or lack of maintenance.

*Proof of purchase is necessary.*

All warranty claims are subject to inspection of such products or part thereof and Craftex reserves the right to inspect any returned item before a refund or replacement may be issued.

This warranty shall not apply to consumable products such as blades, bits, belts, cutters, and chisels, punches etceteras.

Craftex shall in no event be liable for injuries, accidental or otherwise, death to persons or damage to property or for incidental contingent, special or consequential damages arising from the use of our products.

#### RETURNS, REPAIRS AND REPLACEMENTS

*To return, repair, or replace a Craftex product, you must visit the appropriate Busy Bee Tools showroom. Craftex is a brand of equipment that is exclusive to Busy Bee Tools.*

*For replacement parts directly from Busy Bee Tools, for this machine, please call 1-800-461-BUSY(2879), and have your credit card and part number handy.*

- *All returned merchandise will be subject to a minimum charge of 15% for re-stocking and handling with the following qualifications.*
- *Returns must be pre-authorized by us in writing.*
- **We do not accept collect shipments.**
- *Items returned for warranty purposes must be insured and shipped pre-paid to the nearest warehouse (see locations on inside back cover of this manual).*
- *Returns must be accompanied with a copy of your original invoice as proof of purchase. Returns must be in an un-used condition and shipped in their original packaging a letter explaining your reason for the return. Incurred shipping and handling charges are not refundable.*
- *Busy Bee will repair or replace the item at our discretion and subject to our inspection.*
- *Repaired or replaced items will be returned to you pre-paid by our choice of carriers.*
- *Busy Bee reserves the right to refuse reimbursement or repairs or replacement if a third party without our prior authorization has carried out repairs to the item.*
- *Repairs made by Busy Bee are warranted for 30 days on parts and labour.*
- *Any unforeseen repair charges will be reported to you for acceptance prior to making the repairs.*
- *The Busy Bee Parts & Service Departments are fully equipped to do repairs on all products purchased from us with the exception of some products that require the return to their authorized repair depots. A Busy Bee representative will provide you with the necessary information to have this done.*

*For faster service it is advisable to contact the nearest Busy Bee location for parts availability prior to bringing your product in for repairs.*

