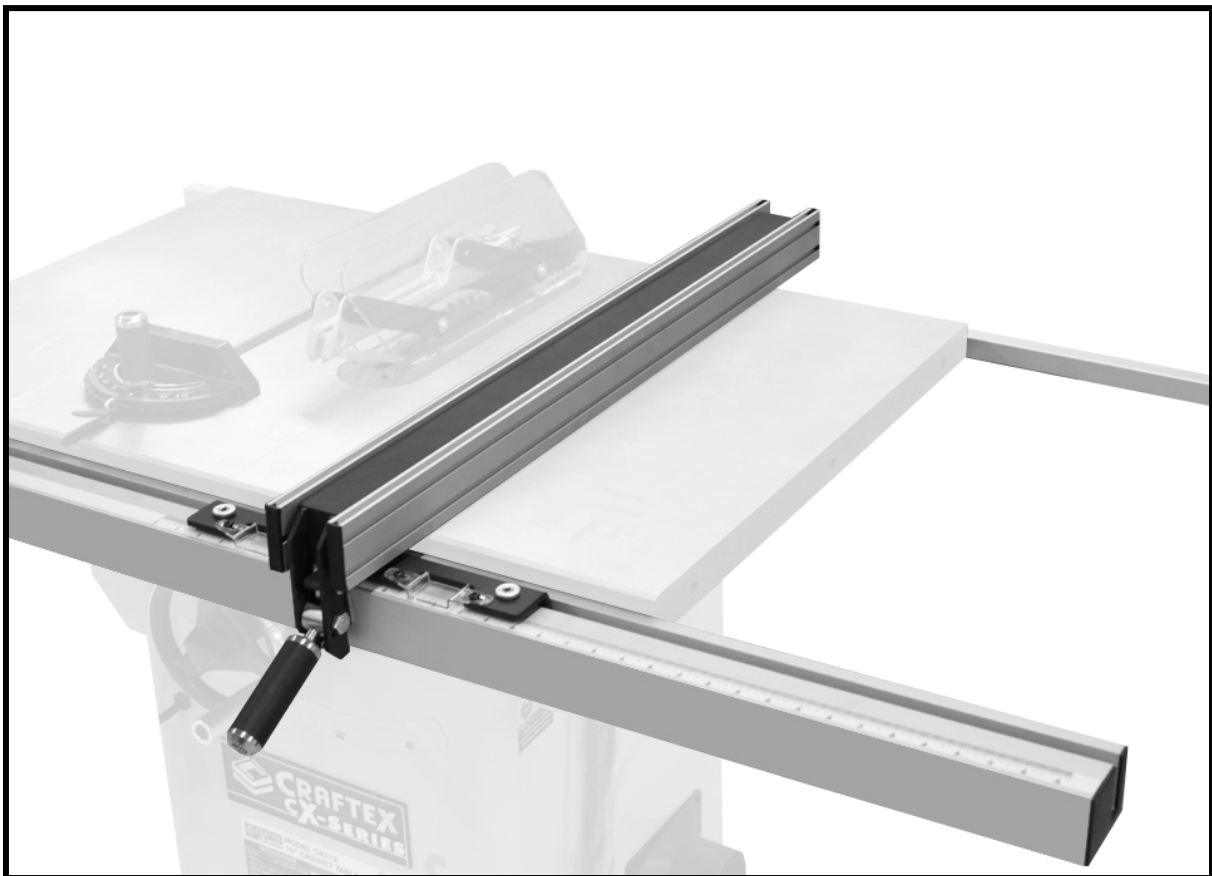
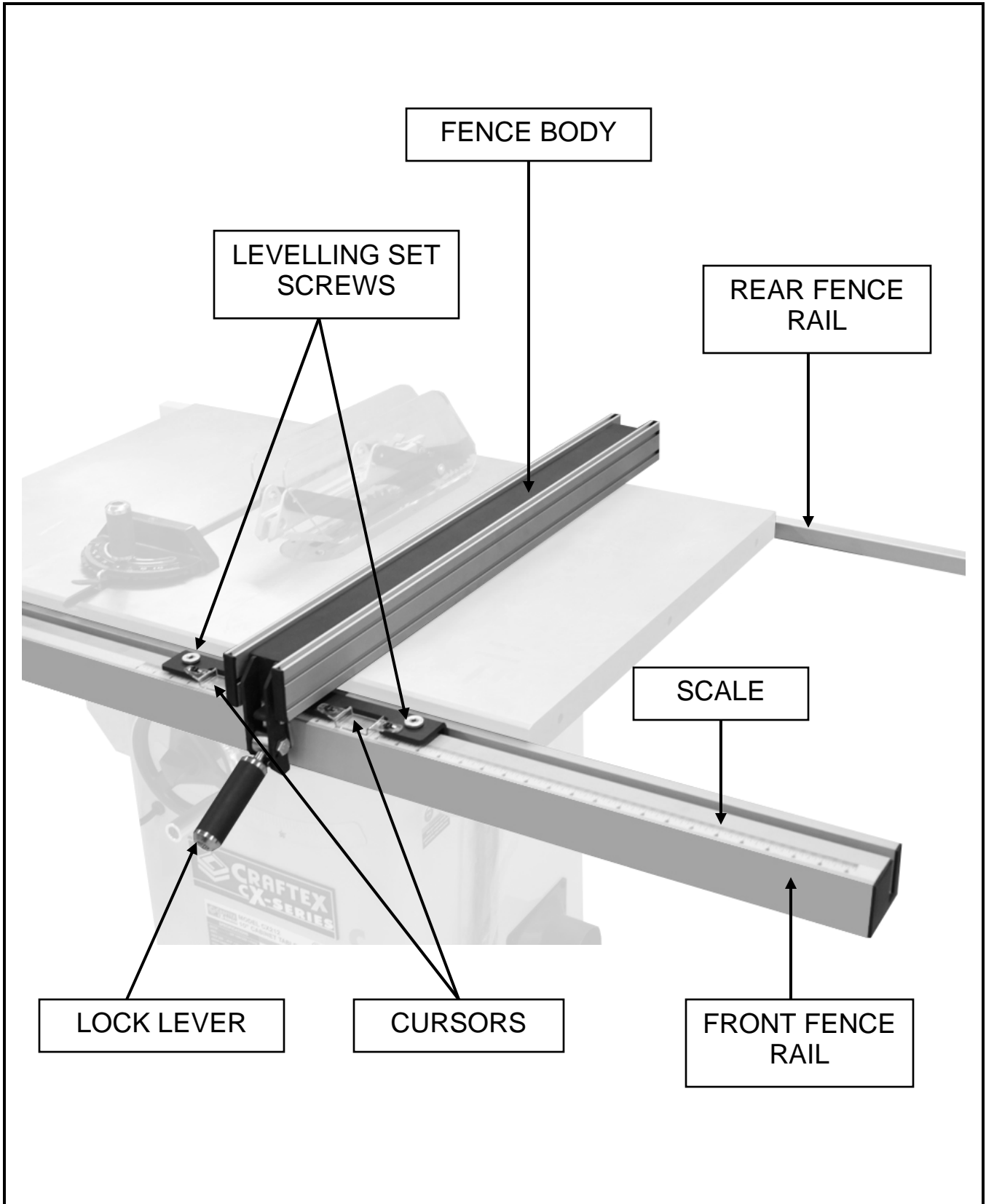




MODEL CX230 / CX250
30" / 50" FENCE FOR TABLE SAW
USER MANUAL



PHYSICAL FEATURES



INSTALLATION

Remove the two hex bolts from the switch bracket and insert into the bottom slot of the fence rail. See figure-1. This will be used to mount the switch later.

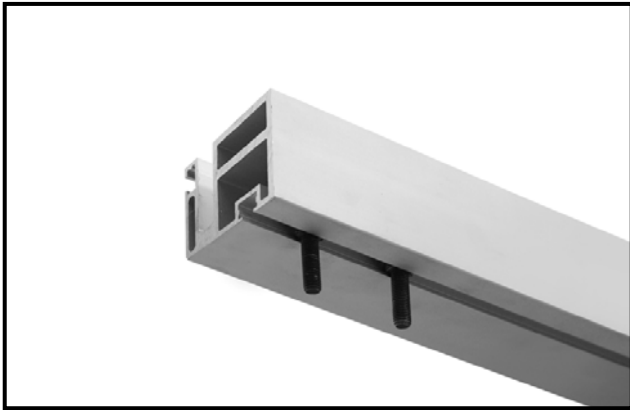


Figure-1 Inserting the hex bolts to the bottom slot of the fence rail

Install the end cap on the left end of the front fence rail. See figure-2.

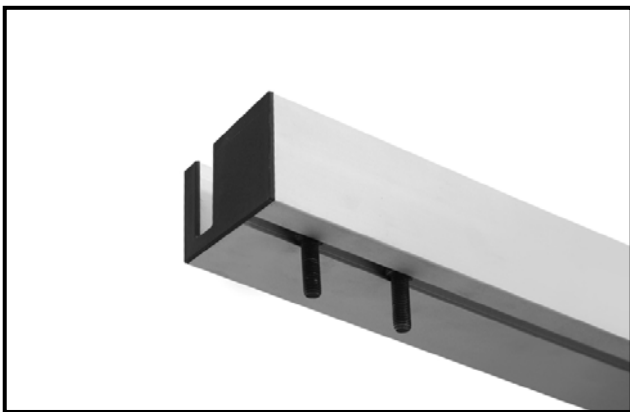


Figure-2 Installing the end cap

INSTALLING CX250

Slide eight hex bolts into the open slot on the fence rail.

INSTALLING CX230

Slide twelve hex bolts into the open slot on the fence rail. See figure-3.

Align the hex bolts with the hole on the table and extension wings and insert them into the holes. Hand tighten the hex bolts.



Figure-3 Installing the front fence rail

Attach the rear fence rail on the rear of the table and extension wings and secure it using cap screws provided. See figure-9.



Figure-4 Installing the rear fence rail

Place the fence on the fence rails and press the handle down to lock the fence in position. See figure-5.

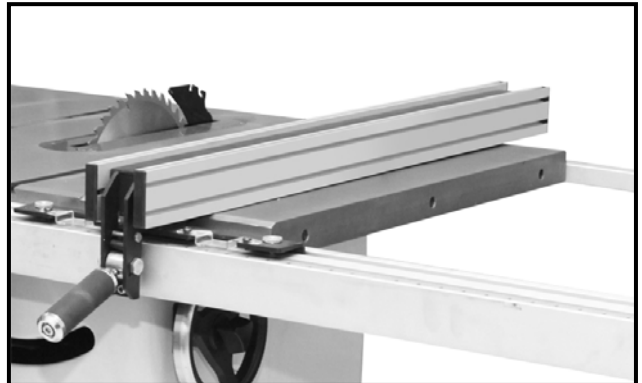


Figure-5 Installing the fence

FENCE PARALLELISM

The fence should always be parallel to the miter slot.

To adjust the fence parallel with the miter slot:

Disconnect the cord from the power source.

Align edge of the fence with the edge of miter slot and lock the fence in position.

Check the alignment between the left edge and the miter slot.

Unlock the fence and put it upside down.

Adjust the set screws shown in figure-6 to adjust the angle of the fence.

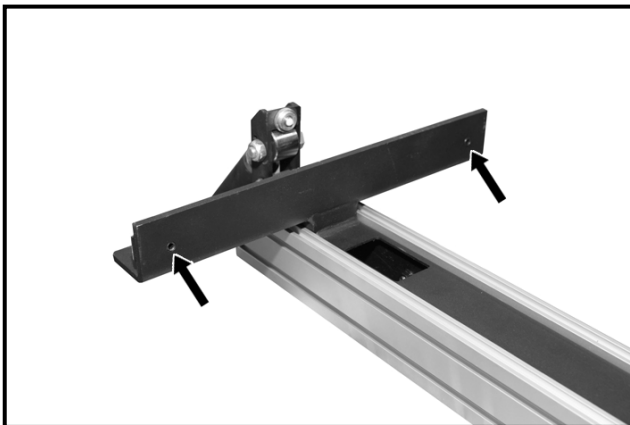


Figure-6 Fence adjustment screws

SCALE INSTALLATION AND ADJUSTMENT

To install the scale, make sure the machine is OFF and the cord is unplugged from the power source.

Raise the blade to its maximum height.

Position the fence against the right side of the blade.

Now, carefully position the scale along the front rail underneath the scale indicator. Make sure not to stretch the tape.

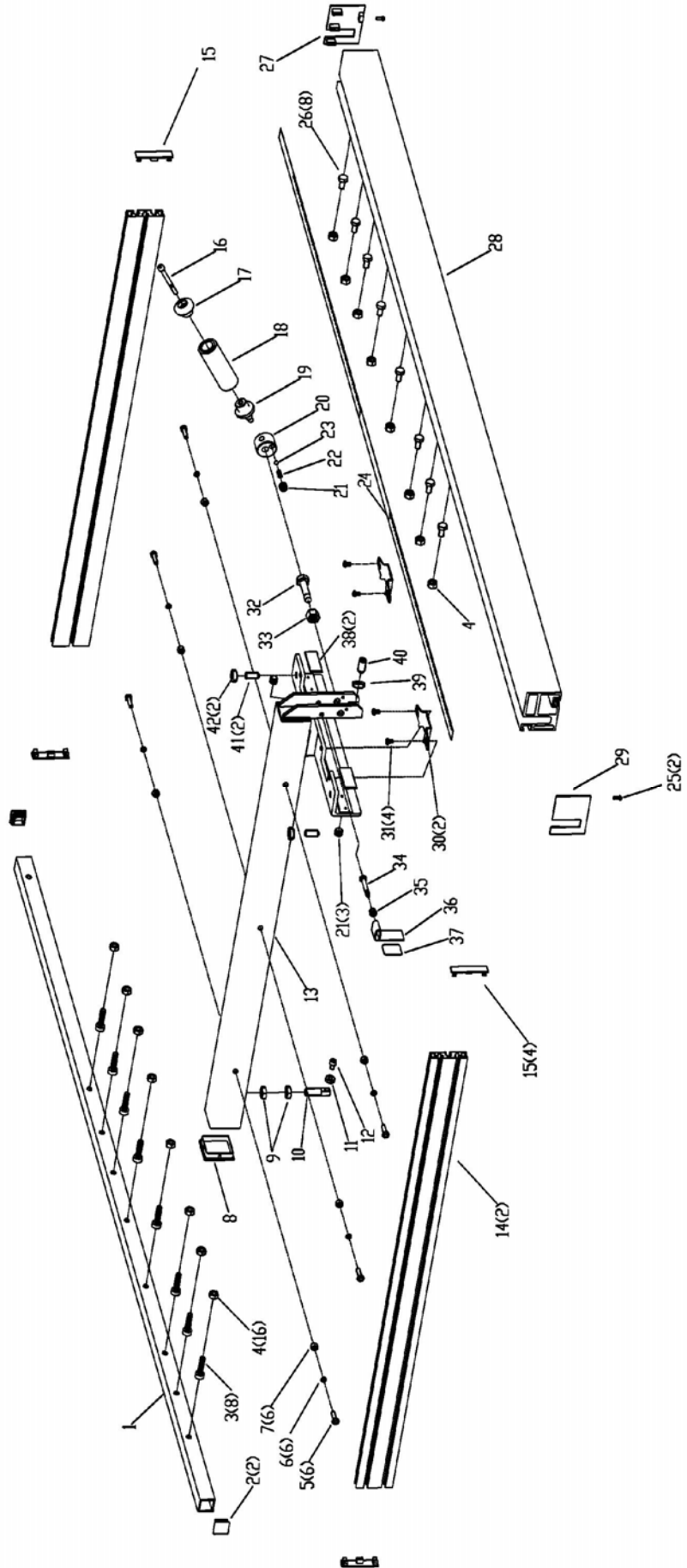
Position the "0" mark on the scale under the cursor hairline and attach the scale to the rail.

Adjust the cursor so that the hairline is directly over the "0" mark on the scale and make a test cut. Measure the thickness of your test cut.



Figure-7 Scale installed on the front rail

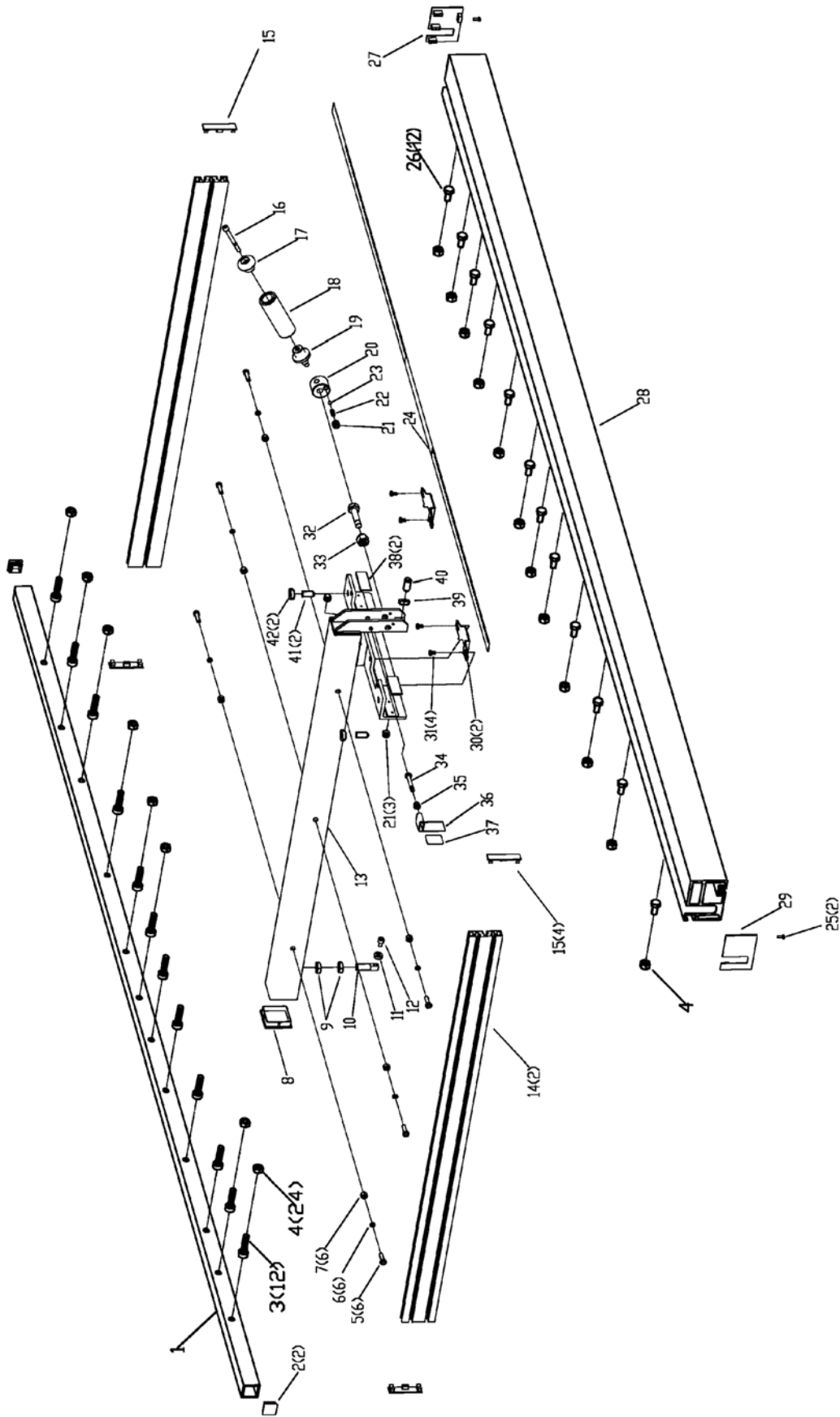
CX230 FENCE PARTS DIAGRAM



CX230 FENCE PARTS LIST

NO.	DESCRIPTION	QUANTITY
1	Rear Rail	1
2	Rear Rail End Cover	2
3	Bolt M8x25	8
4	Nut M8	16
5	Bolt M6x12	6
6	Washer	6
7	Nut M6	6
8	Fence End Cover	1
9	Nut M12	2
10	Shaft	1
11	Bearing	1
12	Screw M6x12	1
13	Fence Assembly	1
14	Side Plate	2
15	End Cover	4
16	Bolt M8x85	1
17	Handle Cover	1
18	Handle Sleeve	1
19	Screw Rod 1	1
20	Eccentric Wheel	1
21	Screw M8x8	3
22	Compression Spring	1
23	Steel Ball	1
24	Scale Label(Left)	1
25	Screw	2
26	Bolt M8x25	8
27	Front Rail End Cover (Right)	1
28	Front Rail	1
29	Front Rail End Cover (Left)	1
30	Pointer Plate	2
31	Screw M6x8	4
32	Bolt M10x45	1
33	Nut M10	1
34	Bolt M6x12	1
35	Nut M6	1
36	Spring Washer	1
37	Washer	1
38	Spring Plate	2
39	Thin Nut M10	1
40	Screw M10	1
41	Screw M10x17	2
42	Nut M10	2

CX250 FENCE PARTS DIAGRAM



CX250 FENCE PARTS LIST

NO.	DESCRIPTION	QUANTITY
1	Rear Rail	1
2	Rear Rail End Cover	2
3	Bolt M8x30	12
4	Nut M6	24
5	Bolt M6x12	6
6	Washer	14
7	Nut M6	6
8	Fence End Cover	1
9	Nut M12	2
10	Shaft	1
11	Bearing	1
12	Screw M6x12	9
13	Fence Assembly	1
14	Side Plate	2
15	End Cover	4
16	Bolt M8x85	1
17	Handle Cover	1
18	Handle Sleeve	1
19	Screw Rod 1	1
20	Eccentric Wheel	1
21	Screw M8x8	3
22	Compression Spring	1
23	Steel Ball	1
24	Scale Label(Left)	1
25	Screw	2
26	Bolt M8x30	12
27	Front Rail End Cover (Right)	1
28	Front Rail	1
29	Front Rail End Cover (Left)	1
30	Pointer Plate	2
31	Screw M6x8	4
32	Bolt M10x45	1
33	Nut M10	1
34	Bolt M6x40	1
35	Nut M6	1
36	Spring Washer	1
37	Washer	1
38	Spring Plate	2
39	Thin Nut M10	1
40	Screw M10	1
41	Screw M10*15	2
42	Nut M10	2



WARRANTY

CRAFTEX 3 YEAR LIMITED WARRANTY

Craftex warrants every product to be free from defects in materials and agrees to correct such defects where applicable. This warranty covers **three years** for parts and 90 days for labour (unless specified otherwise), to the original purchaser from the date of purchase but does not apply to malfunctions arising directly or indirectly from misuse, abuse, improper installation or assembly, negligence, accidents, repairs or alterations or lack of maintenance.

Proof of purchase is necessary.

All warranty claims are subject to inspection of such products or part thereof and Craftex reserves the right to inspect any returned item before a refund or replacement may be issued.

This warranty shall not apply to consumable products such as blades, bits, belts, cutters, chisels, punches etceteras.

Craftex shall in no event be liable for injuries, accidental or otherwise, death to persons or damage to property or for incidental contingent, special or consequential damages arising from the use of our products.

RETURNS, REPAIRS AND REPLACEMENTS

To return, repair, or replace a Craftex product, you must visit the appropriate Busy Bee Tools showroom or call 1-800-461-BUSY. Craftex is a brand of equipment that is exclusive to Busy Bee Tools.

For replacement parts directly from Busy Bee Tools, for this machine, please call 1-800-461-BUSY (2879), and have your credit card and part number handy.

- All returned merchandise will be subject to a minimum charge of 15% for re-stocking and handling with the following qualifications.
- Returns must be pre-authorized by us in writing.
- We do not accept *collect* shipments.
- Items returned for warranty purposes must be insured and shipped pre-paid to the nearest warehouse
- Returns must be accompanied with a copy of your original invoice as proof of purchase. Returns must be in an un-used condition and shipped in their original packaging a letter explaining your reason for the return. Incurred shipping and handling charges are not refundable.
- Busy Bee will repair or replace the item at our discretion and subject to our inspection.
- Repaired or replaced items will be returned to you pre-paid by our choice of carriers.
- Busy Bee reserves the right to refuse reimbursement or repairs or replacement if a third party without our prior authorization has carried out repairs to the item.
- Repairs made by Busy Bee are warranted for 30 days on parts and labour.
- Any unforeseen repair charges will be reported to you for acceptance prior to making the repairs.
- The Busy Bee Parts & Service Departments are fully equipped to do repairs on all products purchased from us with the exception of some products that require the return to their authorized repair depots. A Busy Bee representative will provide you with the necessary information to have this done.
- For faster service it is advisable to contact the nearest Busy Bee location for parts availability prior to bringing your product in for repairs.