



MODEL CX909N

HEAVY DUTY UNIVERSAL MOBILE BASE

USER MANUAL



COPYRIGHT © 2019 BY CRAFTEX INDUSTRIES INC.

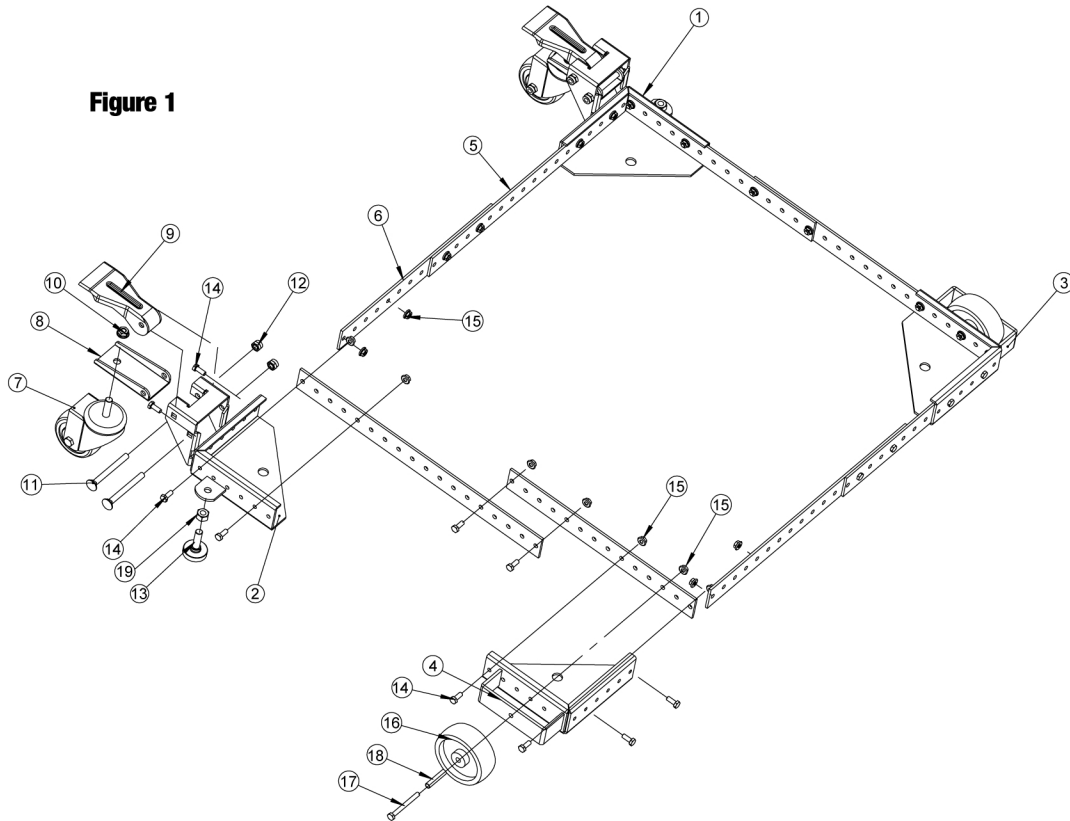
NO PORTION OF THIS MANUAL MAY BE PRODUCED WITHOUT THE WRITTEN CONSENT OF CRAFTEX INDUSTRIES INC.



TABLE OF CONTENTS

Parts List	3
General Safety Instructions for Power Tools	4
Safety Instructions for Mobile Bases	5
Assembly Instructions.....	5
Assembly Examples	6
Attaching Wheels and Casters	6
Warranty	7

Figure 1



Parts List

	Description	Qty
1	FRONT LEFT CORNER	1
2	FRONT RIGHT CORNER	1
3	REAR LEFT CORNER	1
4	REAR RIGHT CORNER	1
5	18" SIDE RAIL	4
6	13.5" SIDE RAIL	4
7	3" SWIVEL CASTER	2
8	SWIVEL PLATE	2
9	FOOT LEVER	2
10	M10 JAM NUT	4
11	CARRIAGE BOLT M8-80	4
12	M8 NUT	4
13	RUBBER GLIDE FOOT	2
14	HEX BOLT M6-15	24
15	M6 FLANGE NUT	26
16	4" WHEEL	2
17	AXLE BOLT M6-60	4
18	WHEEL SLEEVE	2
19	M10 NUT	2

Warning:

Any power tool must be bolted securely to stand before use.

Warning:

Read Owners Manual carefully and be completely familiar with the correct and safe operation of each power tool before use.

Failure to follow these rules may result in serious personal injury.

General Safety Instructions for Power Tools

Using power tools of any kind can be dangerous if safe operating procedures are not followed. Recognizing the hazards of each tool and using them with respect and caution will considerably limit the possibility of personal injury. However, if safety precautions are ignored, personal injury will likely result. Always use common sense – your personal safety is your responsibility.

1. Know your power tool. Read and understand the Owner's Manual and observe the warnings and instruction labels affixed to the tool.
2. Properly ground all tools.
3. Keep guards in place.
4. Remove adjusting keys and wrenches.
5. Keep work area clean and dry.
6. Keep children away.
7. Never leave running machines/tools unattended.
8. Disconnect tools from service.
9. Regularly maintain tools.
10. Use correct tools for the job.
11. Never force a tool.
12. Wear safety apparel.
13. Use safety glasses/goggles.
14. Never stand or sit on tools.
15. Replace damaged components immediately.
16. Make sure your work platform is sufficiently sturdy to do the specific job at hand.
17. Use power tools in a well lit area with a level surface on which to stand that is clean and free from any obstruction.
18. Clamp work piece securely.
19. Properly anchor power tools to work stands.
20. Use correct blade for job being done.
21. Think Safety. Safety is a combination of operator awareness, common sense and alertness at all times.

Safety Instructions for Mobile Bases

1. Be careful when moving to limit any finger pinch points.
2. Place base on a level surface and adjust levelers before placing the machine in position. This should keep the machine from rocking, while testing it for stability.
3. Test for stability in both the up (on the casters) and the down positions. Exercise caution when testing the stability of top heavy machines (drill presses, band saws, etc.).
4. Unplug any power tool before moving or repositioning your tool.
5. Always test your set-up for stability and safety after repositioning.
6. Care should be taken when planning the orientation of the machine onto the universal mobile base. Transfer of weight off of the levelers to the casters will result in the machine tilting 1/2" toward the fixed wheels. When positioning top heavy tools such as a drill press or band saw, take advantage of the center of gravity, and position so that it will remain stable while on casters.
7. Never use your machine while it is suspended on the two swivel casters. Always lower the machine onto the non-skid levelers before operating.
8. When moving, always push the base, not the machine.

Assembly Instructions

Tools required: M6, M8, M10 wrench, M6 socket, tape measure, pliers.

1. Unpack and identify all components and hardware. Make sure there are no missing parts and that there is no shipping damage.

Note: Read instructions thoroughly before proceeding.

2. Carefully measure the footprint of your machine (or whatever you are mobilizing) and add about 1" to the dimension. (1" allows clearance for the fasteners). Keep in mind the base adjusts in 1" increments.
3. Carefully review assembly examples shown below to help you determine the fixed wheel, caster and leveler placement. As these are examples only, you must determine what best suits your particular machine's requirements for stability.
4. Select and arrange the Corners and the Side Rails as necessary to assemble the base to your machine's footprint.

Note: If help to lift your machine into the base is not available, you may want to assemble the base around your machine. Use 2 x 4's to block the machine up.

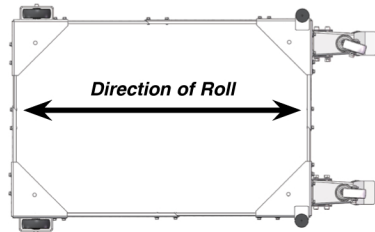
5. Bolt the Side Rails to the corners and each other using these simple rules:
 - A: All connections require the use of (2) M6-15 bolts (14) and (2) M6 nuts (15) at each end of the connections.
 - B: Position Side Rails into corners as far as is practical.
 - C: It is recommended you keep your machine stand symmetrical by using the same size and positioning of Side Rails on opposite sides. For maximum strength, use 18" rails along the side whenever possible to connect the swivel corner to the rest of the base.

Note: Insert bolts so that the nuts are on the inside of the mobile base.

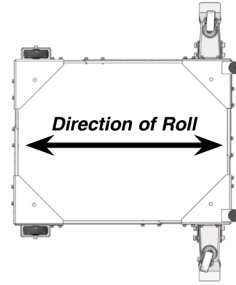
6. Re-check dimensions, then tighten all bolts and nuts.

Assembly Examples

Be sure to follow safety and Assembly Instructions. Keep in mind the actual operation of your machine and the effect it has on overall stability.



A long, narrow base, such as on a jointer, would benefit from this arrangement. Most machines may be arranged to the convenience of the user.



A short narrow base, such as found on a drill press or bandsaw, may benefit from this arrangement. Due to swivel rotation base may sit out of level. Rotate swivel wheel away from base to correct.

Attaching Wheels and Casters

1. Review the diagrams for wheel, caster and leveler placement.
2. Attach swivel plate (8) to the (Front-Right) caster bracket corner (2) using M8-80 carriage bolt (11) and M8 self locking nut (12). For proper orientation, refer to Figure (1).
3. Attach foot lever (9) to caster bracket using M8-80 carriage bolt (11) and M8 self-locking nut (12).
4. Attach swivel caster (7) to swivel plate (8) using M10 nut (10).
5. Insert threaded rubber foot (13) into the threaded hole in leveling foot bracket. Spin M10 nut (19) onto the top of the threaded rubber foot (13).
6. Repeat steps (1) through (5) on the (Front-Left) caster bracket corner (1).
9. Slip wheel (16) into position on left and right corners ((3) & (4)), refer to Figure (1).
10. Insert M6-60 bolt (17) through hole in the outer edge of wheel housing, through wheel (16) through wheel sleeve (18), and secure to corner using M6 flange nut (15). Use care not to overtighten. Over tightening will prevent the wheel from turning.
Tip: Insert extra bolt into the axle hole from the inside of the corner. Insert the bolt into the wheel housing just far enough to act as a "hanger" for the nylon washer. Now carefully align the wheel, and install the axle bolt, per above.
11. Lift your machine or item to be mobilized into place.

CAUTION: Check stability in both the up and down positions before using. Failure to follow safety and assembly instructions may result in personal injury or damage to product.



WARRANTY

CRAFTEX 3 YEARS LIMITED WARRANTY

Craftex warrants every product to be free from defects in materials and agrees to correct such defects where applicable. This warranty covers **three years** for parts and 90 days for labour (unless specified otherwise), to the original purchaser from the date of purchase but does not apply to malfunctions arising directly or indirectly from misuse, abuse, improper installation or assembly, negligence, accidents, repairs or alterations or lack of maintenance.

Proof of purchase is necessary.

All warranty claims are subject to inspection of such products or part thereof and Craftex reserves the right to inspect any returned item before a refund or replacement may be issued.

This warranty shall not apply to consumable products such as blades, bits, belts, cutters, chisels, punches etceteras.

Craftex shall in no event be liable for injuries, accidental or otherwise, death to persons or damage to property or for incidental contingent, special or consequential damages arising from the use of our products.

RETURNS, REPAIRS AND REPLACEMENTS

To return, repair, or replace a Craftex product, you must visit the appropriate Busy Bee Tools showroom or call 1-800-461-BUSY. Craftex is a brand of equipment that is exclusive to Busy Bee Tools.

For replacement parts directly from Busy Bee Tools, for this machine, please call 1-800-461-BUSY (2879), and have your credit card and part number handy.

- All returned merchandise will be subject to a minimum charge of 15% for re-stocking and handling with the following qualifications.
- Returns must be pre-authorized by us in writing.
- We do not accept *collect* shipments.
- Items returned for warranty purposes must be insured and shipped pre-paid to the nearest warehouse
- Returns must be accompanied with a copy of your original invoice as proof of purchase. Returns must be in an un-used condition and shipped in their original packaging a letter explaining your reason for the return. Incurred shipping and handling charges are not refundable.
- Busy Bee will repair or replace the item at our discretion and subject to our inspection.
- Repaired or replaced items will be returned to you pre-paid by our choice of carriers.
- Busy Bee reserves the right to refuse reimbursement or repairs or replacement if a third party without our prior authorization has carried out repairs to the item.
- Repairs made by Busy Bee are warranted for 30 days on parts and labour.
- Any unforeseen repair charges will be reported to you for acceptance prior to making the repairs.
- The Busy Bee Parts & Service Departments are fully equipped to do repairs on all products purchased from us with the exception of some products that require the return to their authorized repair depots. A Busy Bee representative will provide you with the necessary information to have this done.