



CXARM UNIVERSAL OVERARM BLADE GUARD User Manual



General Safety Instructions for Machineries

Extreme caution should be used when operating all power tools. Know your power tool, be familiar with its operation, read through the owner's manual and practice safe usage procedures at all times.

- **CONNECT** your machine ONLY to the matched and specific power source.
- **ALWAYS** wear safety glasses respirators, hearing protection and safety shoes, when operating your machine.
- **DO NOT** wear loose clothing or jewelry when operating your machine.
- **GROUND ALL TOOLS** if tool is equipped with three-prong plug, it should be plugged into a three-hole electrical receptacle. If an adapter is used to accommodate a two-prong receptacle, the adapter plug must be attached to a known ground. Never remove the third prong.
- **A SAFE ENVIRONMENT** is important. Keep the area free of dust, dirt and other debris in the immediate vicinity of your machine.
- **KEEP CHILDREN AND VISITORS AWAY.** All children and visitors should be kept a safe distance from work area.
- **NEVER** leave a tool unattended while the machine is in operation.
- **DON'T OVERREACH.** Keep proper footing and balance at all times.
- **DISCONNECT** the power source when changing drill bits, hollow chisels, router bits, shaper heads, blades, knives or making other adjustments or repairs.
- **SECURE WORK.** Use clamps or a vise to hold work when practical. It's safer than using your hand and frees both hands to operate tool.
- **BE ALERT! DO NOT** use prescription or other drugs that may affect your ability or judgment to safely use your machine.
- **MAINTAIN TOOLS IN TOP CONDITION.** Keep the blades sharp and aligned. Follow instructions for lubricating and changing accessories.
- **DISCONNECT TOOLS** before servicing and when changing accessories such as blades, bits, cutters, etc.
- **ALWAYS** keep all safety guards in place and ensure their proper function.
- The dust generated by certain woods and wood products can be injurious to your health. **ALWAYS** operate machinery in well ventilated areas use wood dust collection systems whenever possible.

OVERARM BLADE GUARD

This universal overarm blade guard with 3" dust collection boom (accepting 4" hose) fits most table saws on the market. The dust boom can rotate 90° and extends from 39" to 68". The base of CXARM is designed to make it stand with great stability over the table saw.

Assembly

Take the four feet out of the box and thread the ½" hex nuts to the feet. Take the support legs and thread the two correct feet to the two threaded support legs. See the figure on page 4.

Take the vertical support out of the box and attach the two side supports to it using the washers and screws provided.

Take the two remaining feet and attach them to the extension tube and slide the extension tube into the bottom part of the vertical support. Use bolts provided to tighten it in place.

Now, adjust the feet so that the vertical support stands straight and then tighten the nuts on the feet.

Take the dust boom and insert its shaft into the top of the vertical support and lock it with the help of lock lever.

Now, take the blade guard assembly and attach it to the dust boom with the help of the screws provided.

CXARM is provided with a connecting bracket and it can be connected to your table saw for added stability. Take the connecting bracket and mark through its holes on your table saw. Drill holes on the

marked points, on your table saw to fit ¼" fasteners (NOT INCLUDED with CXARM). After you have completed this step, attach the blade guard assembly to your table saw.

Dust Boom Rotation

The dust boom on CXARM can be extended from 39" to 68" over the saw and it can rotate up to 90°.

The dust boom has a lock lever on its side connected to the vertical support. Unlock the lock lever and rotate the dust boom as needed and lock back the lever to stop the boom from unexpected rotations.

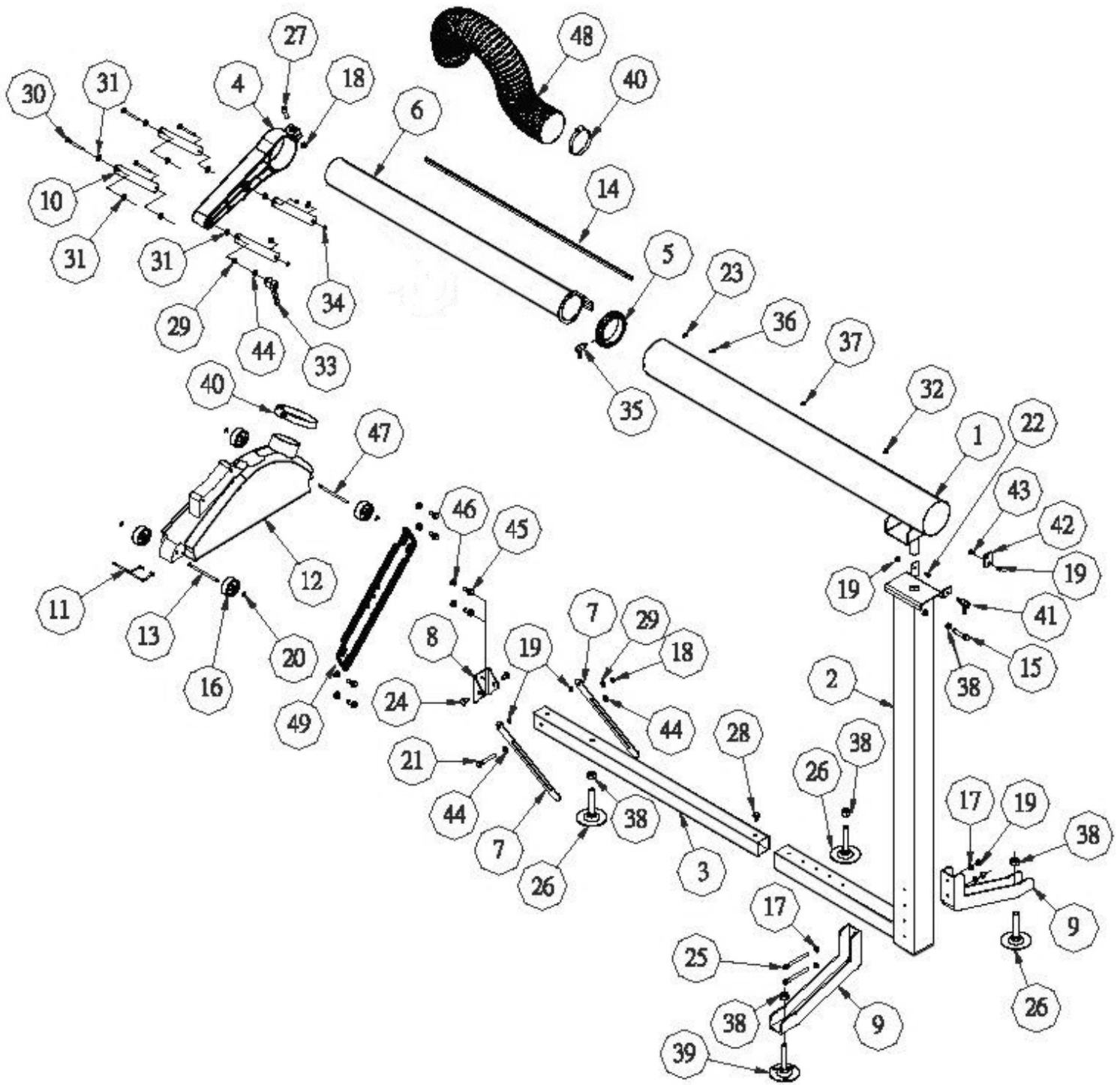
Adjustable Threaded Feet

The threaded feet should be adjusted so that CXARM stands straight. These feet can also be used to adjust the height of the blade guard on the table saw.

CAUTION

- 1. Read your table saw owner's manual before operation.*
- 2. Always use a dust collection system with CXARM.*
- 3. Always ensure that the blade guard assembly is properly attached to your saw.*
- 4. Before using your CXARM, ensure that your riving knife is installed securely and correctly.*
- 5. Ensure that the guard wheels rest on the table surface with any work-piece being cut.*

CXARM – Overarm Blade Guard Parts Breakdown



CXARM – Overarm Blade Guard Parts List

#	DESCRIPTION
1.	TOP BOOM
2.	VERTICAL SUPPORT ROD
3.	EXTENSION TUBE
4.	ROTATING ARM
5.	BOOM END CAP
6.	INSIDE BOOM
7.	SLIDING BRACKET
8.	CONNECTING BRACKET
9.	SIDE SUPPORT LEG
10.	ROTATING SHAFT
11.	GUARD HANDLE
12.	BLADE GUARD
13.	FRONT AXLE
14.	BOOM KEY
15.	HEX BOLT 1/2"-13 X 2-1/2"
16.	GUARD WHEEL
17.	FLAT WASHER 5/16"
18.	HEX NUT 1/4-20
19.	HEX NUT 5/16"-18
20.	AXLE CLIP
21.	HEX BOLT 1/4-20 X 2-1/2"
22.	HEX BOLT 5/16-18 X 1"
23.	PHLP HD SCR 1/4-20" X 3/8"
24.	CARRIAGE BOLT 5/16-18 X 3/4"
25.	CAP SCREW 5/16-18 X 4"
26.	THREADED FOOT 1/2-13 X 3"
27.	CAP SCREW 1/4-20 X 3/4"
28.	FLANGE BOLT 5/16-18 X 1/2"
29.	LOCK WASHER 1/4"
30.	CARRIAGE BOLT 1/4-20 X 2-1/4"
31.	PLASTIC FLAT WASHER 1/4"
32.	BUTTON HD CAP SCR M5-8 X 25
33.	LOCK LEVER 1/4-20
34.	LOCK NUT 1/4-20
35.	LOCK LEVER 1/4-20 X 1/2"
36.	BUTTON CAP M5-.8 X 12"
37.	BUTTON CAP M5-.8 X 10"
38.	HEX NUT 1/2-13
39.	THREADED FOOT 1/2-13 X 4"
40.	HOSE CLAMP 3"

41.	LOCK LEVER 5/16-18 X 5/8"
42.	CONNECTING PLATE
43.	HEX BOLT 5/16-18 X 5/8"
44.	FLAT WASHER 1/4"
45.	FLANGE BOLT 5/16-18 X 3/4"
46.	FLANGE NUT 5/16-18
47.	REAR AXLE
48.	DUST HOSE
49.	Machine Mounting Bracket



WARRANTY

CRAFTEX CX-Series 3 YEAR LIMITED WARRANTY

Craftex warrants every product to be free from defects in materials and agrees to correct such defects where applicable. This particular warranty covers **three years** for parts and 90 days for labour (unless specified otherwise), to the original purchaser from the date of purchase but does not apply to malfunctions arising directly or indirectly from misuse, abuse, improper installation or assembly, negligence, accidents, repairs or alterations or lack of maintenance.

Proof of purchase is necessary.

All warranty claims are subject to inspection of such products or part thereof and Craftex reserves the right to inspect any returned item before a refund or replacement may be issued.

This warranty shall not apply to consumable products such as blades, bits, belts, cutters, chisels, punches etceteras.

Craftex shall in no event be liable for injuries, accidental or otherwise, death to persons or damage to property or for incidental contingent, special or consequential damages arising from the use of our products.

RETURNS, REPAIRS AND REPLACEMENTS

To return, repair, or replace a Craftex product, you must visit the appropriate Busy Bee Tools showroom or call 1-800-461-BUSY. Craftex is a brand of equipment that is exclusive to Busy Bee Tools.

For replacement parts directly from Busy Bee Tools, for this machine, please call 1-800-461-BUSY (2879), and have your credit card and part number handy.

- All returned merchandise will be subject to a minimum charge of 15% for re-stocking and handling with the following qualifications.
- Returns must be pre-authorized by us in writing.
- We do not accept *collect* shipments.
- Items returned for warranty purposes must be insured and shipped pre-paid to the nearest warehouse
- Returns must be accompanied with a copy of your original invoice as proof of purchase. Returns must be in an un-used condition and shipped in their original packaging a letter explaining your reason for the return. Incurred shipping and handling charges are not refundable.
- Busy Bee will repair or replace the item at our discretion and subject to our inspection.
- Repaired or replaced items will be returned to you pre-paid by our choice of carriers.
- Busy Bee reserves the right to refuse reimbursement or repairs or replacement if a third party without our prior authorization has carried out repairs to the item.
- Repairs made by Busy Bee are warranted for 30 days on parts and labour.
- Any unforeseen repair charges will be reported to you for acceptance prior to making the repairs.
- The Busy Bee Parts & Service Departments are fully equipped to do repairs on all products purchased from us with the exception of some products that require the return to their authorized repair depots. A Busy Bee representative will provide you with the necessary information to have this done.
- For faster service it is advisable to contact the nearest Busy Bee location for parts availability prior to bringing your product in for repairs.